

Daily Newsletter-Equity

19/06/2015




CapitalHEIGHT
When Money Matters

www.capitalheight.com

MARKET WRAP

- ▶ Indian markets ended green. Nifty and Sensex both up by more than 1% .
- ▶ Asia-Pacific ended mixed. Hang Seng down by 0.22% and Kospi up by 0.34%.
- ▶ Wall Street up.USD unemployment increased by 2k. Dow futures down by 22 pts.

Indian indices cheered up and ended on positive note. On sectorial front Pharma and FMCG sectors were highly up while Banking, Media and Metal sectors were down. Sensex was up by 283 points at 27115 & Nifty went up by 83 points to settle at 8174 level. European markets trade downside.

Stock Recommendation



Capital Height's

Stock recommendation for 19/6/2015 is Maruti Ltd. In today's trading session it was up by 1.37 %. Its long term trend is up. On daily chart MACD & RSI has given buying confirmation. On daily chart its short term support level is 3785. All

the indicators are suggesting that one can go for long position in this stock above 3862 levels. The stock may test level of 3900-3950 in coming days.

Our recommendation on Maruti Ltd Ltd. is **long** above 3862 levels for target of 3900-50.

MARKET PERFORMANCE

Sectorial Indices

INDEX	P. CLOSE	OPEN	HIGH	LOW	LAST	% CHANGE
CNX Nifty	8091.55	8113.7	8186.9	8101.8	8174.60	1.03
CNX Nifty Junior	19331.15	19370	19440.1	19334.2	19415.75	0.44
India VIX	16.7275	16.7275	16.7275	14.235	16.02	-4.26
CNX 100	8172.2	8193.65	8258.95	8186.5	8248.65	0.94
CNX 500	6680.8	6698.65	6753.9	6697.7	6746.85	0.99
CNX Midcap	12670.2	12704.8	12771.4	12704.8	12762.30	0.73
Nifty Midcap 50	3148.7	3151.1	3179.55	3149.4	3172.45	0.75
Bank Nifty	17584.05	17661.9	17797.35	17630.65	17733.55	0.85
CNX Energy	8537.15	8549.55	8809.45	8545.7	8792.40	2.99
CNX FMCG	19249.1	19262.35	19363.7	19206.45	19248.05	-0.01
CNX IT	11143.5	11191.75	11259.15	11164.1	11215.35	0.64
CNX Media	2178.25	2165.75	2196.9	2163.75	2170.75	-0.34
CNX Metal	2256.7	2263.65	2267.85	2246.25	2252.90	-0.17
CNX MNC	9661.7	9668.45	9718.85	9650.65	9696.55	0.36
CNX Pharma	11678.95	11726.85	11889.75	11711.6	11836.15	1.35
CNX PSE	3450.6	3461.55	3486.85	3456.55	3477.10	0.77
CNX PSU Bank	3168.65	3177.65	3213.4	3167.1	3181.35	0.40
CNX Realty	175.75	176.15	177.45	174.90	175.35	-0.23

Index PE

Index PE	18 June 2015
Nifty	22.66
Sensex	21.48

Nifty Stats

Market Breadth	NSE	BSE
Advance	35	1649
Decline	15	1087
Same	00	110

Macro Economic Data

Economic Data	Current	Previous
Monthly Inflation (m-o-m)	5.20%	4.38%
IIP Growth (m-o-m)	5.00%	2.60%
Repo Rate	7.25%	7.50%
Reserve Repo Rate	7.00%	7.00%
CRR	4.00%	4.00%
GDP Growth (Q-o-Q)	7.50%	5.30%

Index Movers (Pulling Up/Down)

Company Name	Contribution/Up	Company Name	Contribution/Down
Reliance	21.64	Bank of Baroda	-0.51
HDFC Bank	7.61	Coal India	-0.57
Tata Motors	7.11	Cipla	-0.78
HDFC	4.97	Zee Entertain	-1.00
Lupin	3.98	Tech Mahindra	-1.26

Nifty Gainers/ Losers

Symbol	Close Price	% Change	Symbol	Close Price	% Change
RELIANCE	980.05	5.25	ZEEL	345.25	-1.67
LUPIN	1810.00	4.52	TECHM	541.95	-1.31
BPCL	832.75	2.75	BANKBARODA	139.00	-1.17
ONGC	314.00	2.61	PNB	131.20	-0.94
ASIANPAINT	727.50	2.37	COALINDIA	394.95	-0.79

52 Week High/ Low

Symbol	Close Price	% Change	Symbol	Close Price	% Change
APLLTD	616.45	5.48	ADANIPOWER	27.40	-6.8
BAJFINANCE	4904.00	2.68	ALBK	90.15	0.33
CAMLINFINE	109.00	6.39	ANDHRACEMT	7.00	3.7
CHENNPETRO	152.80	6.26	AUSTRAL	0.50	0
CTE	30.45	5	BANKBARODA	139.00	-1.17

Most Active Securities

Symbol	Close Price	% Change
RELIANCE	980.05	5.25
ICICIBANK	303.05	0.56
TATAMOTORS	443.50	2.26
SUNPHARMA	862.00	2.14
LT	1722.00	0.65

Asian Markets

Name	Open	High	Low	Current Value	Change	% Chg
Nikkei 225	20193.59	20200.51	19990.55	19990.82	-228.45	-1.14
Hang Seng	26786.53	26873.67	26595.96	26694.66	-59.13	-0.22
Taiwan	9189.44	9243.84	9187.87	9218.37	28.54	0.31
KOSPI	2046.19	2052.00	2036.78	2041.88	7.02	0.34
Jakarta	1517.13	1518.44	1506.57	1508.04	-6.75	-0.45

DERIVATIVE CORNER

Most Active Call Options

Symbol	Expiry Date	Option type	Strike price	LTP	Traded volume (Contracts)	Traded value (Lakhs)	Open Interest
NIFTY	25-June-15	CE	8600	65.85	3,34,180	7,24,819.71	25,83,250
NIFTY	25-June-15	CE	8500	103.70	3,15,472	6,79,600.82	25,95,950
NIFTY	25-June-15	CE	8700	39.30	2,07,886	4,54,554.17	25,80,875
NIFTY	25-June-15	CE	8800	22.35	1,96,920	4,34,521.21	37,14,275
NIFTY	25-June-15	CE	9000	7.30	1,61,868	3,64,532.81	36,65,225

Most Active Put Options

Symbol	Expiry Date	Option type	Strike price	LTP	Traded volume (Contracts)	Traded value (Lakhs)	Open Interest
NIFTY	25-June-15	PE	8300	92.25	2,93,411	6,15,171.37	31,53,575
NIFTY	25-June-15	PE	8400	129.3	2,69,594	5,74,266.22	19,74,075
NIFTY	25-June-15	PE	8200	64.45	1,95,360	4,03,456.98	35,43,450
NIFTY	25-June-15	PE	8100	44.55	1,52,844	3,11,123.13	35,78,375
NIFTY	25-June-15	PE	8000	30	1,49,901	3,00,881.29	42,71,100

Securities in Ban (19-06-2015)

Securities In Ban		
DISHTV	AMTECHAUTO	IBREALEST
-	-	-

F&O Trade Statistics

Product	No Of Contracts	Turnover In Rs. (Cr)	Put Call Ratio
Index Futures	7,03,412	16929.04	-
Stock Futures	9,60,814	24893.56	-
Index Options	93,43,456	2,00,609.77	0.96
Stock Options	4,73,998	12165.53	0.51
F&O Total	1,14,81,680	2,54,597.91	0.93

FII Trading Activity (NSE & BSE) In Crores

CATEGORY	DATE	BUY VALUE	SELL VALUE	NET VALUE
FII	18-June-2015	4190	5131	-940

DII Trading Activity (NSE & BSE) In Crores

CATEGORY	DATE	BUY VALUE	SELL VALUE	NET VALUE
DII	18-June-2015	2728.31	1281.24	1447.07

Corporate Actions (18 June 2015)

EX-Dividend- Birla Corp, Bank of Mah, Essel Propack

Board Meeting (Purpose)

Central Prov RI, GV Films, Integra Telecom, Nutraplus India (Quarterly results)

TECHNICAL VIEW

NIFTY

DAILY PIVOT

SCRIPT	R4	R3	R2	R1	P	S1	S2	S3	S4
NIFTY	8097	8053	8028	8005	7972	7950	7917	7890	7840

OUTLOOK

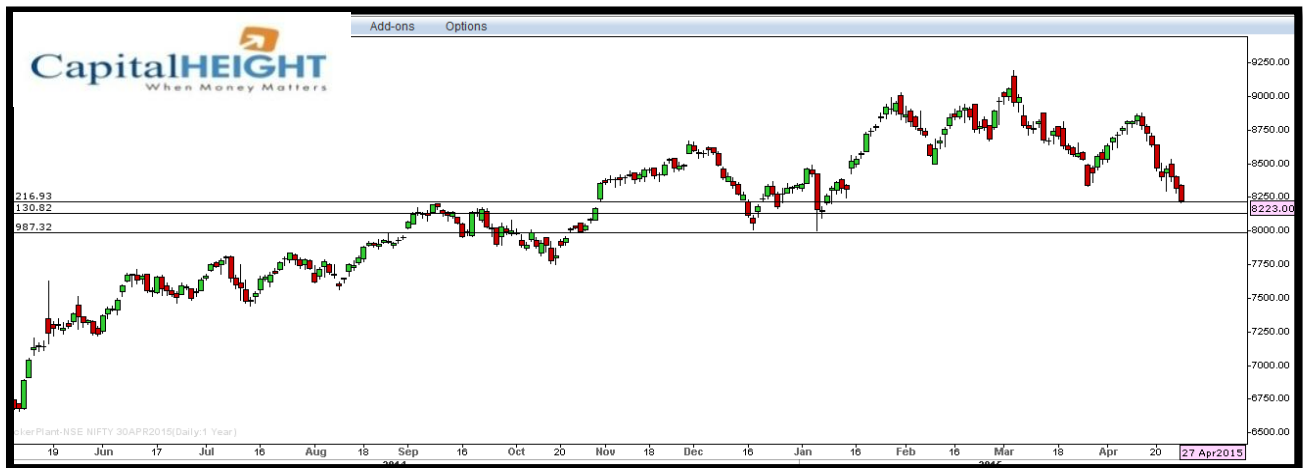
Trend: - Consolidate

Resistance: -8020, 8050

Support: - 7950, 7890

Strategy: - Sell on highs

NIFTY DAILY



BANK NIFTY

DAILY PIVOT

SCRIPT	R4	R3	R2	R1	P	S1	S2	S3	S4
BANK NIFTY	18120	17940	17794	17647	17392	17245	16991	16735	16520

OUTLOOK

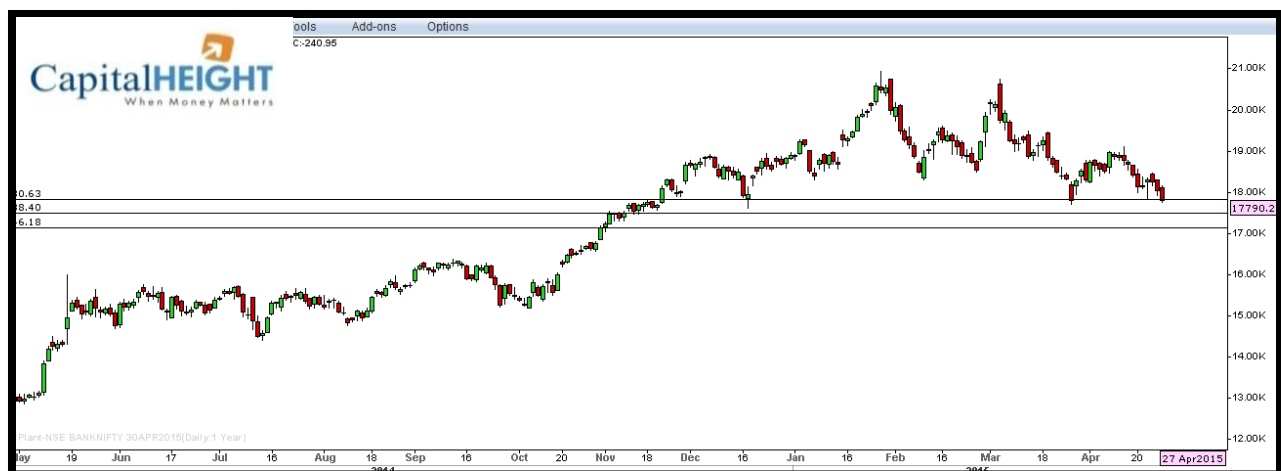
Trend: - Consolidate

Resistance: - 17640, 17940

Support: - 17240, 16730

Strategy: - Sell on highs

BANK NIFTY DAILY



Disclaimer

The information and views in this report, our website & all the service we provide are believed to be reliable, but we do not accept any responsibility (or liability) for errors of fact or opinion. Users have the right to choose the product/s that suits them the most.

Sincere efforts have been made to present the right investment perspective. The information contained herein is based on analysis and up on sources that we consider reliable.

This material is for personal information and based upon it & takes no responsibility

The information given herein should be treated as only factor, while making investment decision. The report does not provide individually tailor-made investment advice. Money CapitalHeight Research investment advisors Pvt. Ltd. recommends that investors independently evaluate particular investments and strategies, and encourages investors to seek the advice of a financial adviser. Money CapitalHeight Research investment advisors Pvt. Ltd. shall not be responsible for any transaction conducted based on the information given in this report, which is in violation of rules and regulations of NSE and BSE.

The share price projections shown are not necessarily indicative of future price performance. The information herein, together with all estimates and forecasts, can change without notice. Analyst or any person related to Money CapitalHeight Research investment advisors Pvt. Ltd. might be holding positions in the stocks recommended. It is understood that anyone who is browsing through the site has done so at his free will and does not read any views expressed as a recommendation for which either the site or its owners or anyone can be held responsible for. Any surfing and reading of the information is the acceptance of this disclaimer.

All Rights Reserved.

Investment in Commodity and equity market has its own risks.

We, however, do not vouch for the accuracy or the completeness thereof. **we are not responsible for any loss incurred whatsoever for any financial profits or loss which may arise from the recommendations above.** Money CapitalHeight Research investment advisors Pvt. Ltd. does not purport to be an invitation or an offer to buy or sell any financial instrument. **Our Clients (Paid Or Unpaid), Any third party or anyone else have no rights to forward or share our calls or SMS or Report or Any Information Provided by us to/with anyone which is received directly or indirectly by them. If found so then Serious Legal Actions can be taken.**