

# Daily Newsletter-Equity

22/06/2015



  
**CapitalHEIGHT**  
When Money Matters

[www.capitalheight.com](http://www.capitalheight.com)

# MARKET WRAP

- ▶ Indian markets ended green. Nifty up by 0.62% and Sensex up by 0.74%.
- ▶ Asia-Pacific ended green. Hang Seng up by 0.25% and Kospi up by 0.25%.
- ▶ Wall Street up. USD unemployment increased by 2k. Dow futures up by 25 pts.

Indian indices edged higher and ended on positive note. On sectorial front Energy, Banking, FMCG sectors were highly up while Media and Metal sectors were down. Sensex was up by 200 points at 27316 & Nifty went up by 50 points to settle at 8224 level. European markets traded upside.

## Stock Recommendation



### Capital Height's

Stock recommendation for 22/6/2015 is Bharti airtel ltd. In today's trading session it was up by 1.77%. Its long term trend is up. On daily chart MACD & RSI has given buying confirmation. On daily chart its short term support level

is 415. All the indicators are suggesting that one can go for long position in this stock above 435 levels. The stock may test level of 445-465 in coming days.

Our recommendation on Bharti airtel Ltd. is **long** above 435 levels for target of 445-455

# MARKET PERFORMANCE

## Sectorial Indices

INDEX	P. CLOSE	OPEN	HIGH	LOW	LAST	% CHANGE
CNX Nifty	8174.6	8201.15	8250.8	8195.65	8224.95	0.62
CNX Nifty Junior	19415.75	19502.95	19609.65	19473.45	19524.60	0.56
India VIX	16.015	16.015	16.015	14.905	15.09	-5.81
CNX 100	8248.65	8277	8324.35	8272.3	8298.70	0.61
CNX 500	6746.85	6770.35	6803.8	6768.1	6785.10	0.57
CNX Midcap	12762.3	12816	12883.75	12802.6	12847.00	0.66
Nifty Midcap 50	3172.45	3189.8	3209.2	3182.3	3203.95	0.99
Bank Nifty	17733.55	17758.95	17935.3	17730.7	17880.85	0.83
CNX Energy	8792.4	8823	8927.3	8821.8	8879.85	0.99
CNX FMCG	19248.05	19258.3	19408.5	19240.45	19345.35	0.51
CNX IT	11215.35	11260.9	11353.25	11222.25	11243.65	0.25
CNX Media	2170.75	2177.9	2189.2	2154.4	2158.25	-0.58
CNX Metal	2252.9	2272.25	2287.25	2250.7	2261.05	0.36
CNX MNC	9696.55	9691.55	9751.9	9680.65	9724.15	0.28
CNX Pharma	11836.15	11887.1	11905.45	11789.9	11810.00	-0.22
CNX PSE	3477.1	3492.95	3505.6	3482	3493.10	0.46
CNX PSU Bank	3181.35	3203.9	3230.25	3181.5	3214.20	1.03
CNX Realty	175.35	176.00	177.25	173.20	173.80	-0.88

## Index PE

Index PE	19 June 2015
Nifty	22.79
Sensex	21.82

## Nifty Stats

Market Breadth	NSE	BSE
Advance	35	1411
Decline	15	1235
Same	00	149

## Macro Economic Data

Economic Data	Current	Previous
Monthly Inflation (m-o-m)	5.20%	4.38%
IIP Growth (m-o-m)	5.00%	2.60%
Repo Rate	7.25%	7.50%
Reserve Repo Rate	7.00%	7.00%
CRR	4.00%	4.00%
GDP Growth (Q-o-Q)	7.50%	5.30%

## Index Movers (Pulling Up/Down)

Company Name	Contribution/Up	Company Name	Contribution/Down
HDFC	10.26	Power Grid Corp	-1.27
Reliance	8.71	Zee Entertain	-1.83
M&M	6.64	Sun Pharma	-2.69
HDFC Bank	6.05	Infosys	-3.56
ITC	4.81	Tata Motors	-8.14

## Nifty Gainers/ Losers

Symbol	Close Price	% Change	Symbol	Close Price	% Change
M&M	1302.05	3.84	TATAMOTORS	433.70	-2.64
BANKBARODA	142.30	2.63	ZEEL	340.45	-1.89
MARUTI	3948.00	2.25	TATAPOWER	72.20	-1.23
NMDC	120.30	2.25	SUNPHARMA	846.30	-1.14
ONGC	319.65	2.17	POWERGRID	140.45	-1.06

## 52 Week High/ Low

Symbol	Close Price	% Change	Symbol	Close Price	% Change
APLLTD	616.45	5.48	ADANIPOWER	27.40	-6.8
BAJFINANCE	4904.00	2.68	ALBK	90.15	0.33
CAMLINFINE	109.00	6.39	ANDHRACEMT	7.00	3.7
CHENNPETRO	152.80	6.26	AUSTRAL	0.50	0
CTE	30.45	5	BANKBARODA	139.00	-1.17

## Most Active Securities

Symbol	Close Price	% Change
RELIANCE	997.15	1.86
EICHERMOT	19235.00	-1.34
HDFC	1237.05	1.96
AXISBANK	554.05	0.73
INFY	997.00	-0.49

## Asian Markets

Name	Open	High	Low	Current Value	Change	% Chg
Nikkei 225	20152.41	20194.45	20075.91	20174.24	183.42	0.91
Hang Seng	26885.73	27011.95	26701.72	26760.53	65.87	0.25
Taiwan	9189.44	9243.84	9187.87	9218.37	28.54	0.31
KOSPI	2056.54	2057.71	2044.71	2046.96	5.08	0.25
Jakarta	1507.60	1508.19	1488.07	1491.46	-16.58	-1.11

# DERIVATIVE CORNER

## Most Active Call Options

Symbol	Expiry Date	Option type	Strike price	LTP	Traded volume (Contracts)	Traded value (Lakhs)	Open Interest
NIFTY	25-June-15	CE	8600	65.85	3,34,180	7,24,819.71	25,83,250
NIFTY	25-June-15	CE	8500	103.70	3,15,472	6,79,600.82	25,95,950
NIFTY	25-June-15	CE	8700	39.30	2,07,886	4,54,554.17	25,80,875
NIFTY	25-June-15	CE	8800	22.35	1,96,920	4,34,521.21	37,14,275
NIFTY	25-June-15	CE	9000	7.30	1,61,868	3,64,532.81	36,65,225

## Most Active Put Options

Symbol	Expiry Date	Option type	Strike price	LTP	Traded volume (Contracts)	Traded value (Lakhs)	Open Interest
NIFTY	25-June-15	PE	8300	92.25	2,93,411	6,15,171.37	31,53,575
NIFTY	25-June-15	PE	8400	129.3	2,69,594	5,74,266.22	19,74,075
NIFTY	25-June-15	PE	8200	64.45	1,95,360	4,03,456.98	35,43,450
NIFTY	25-June-15	PE	8100	44.55	1,52,844	3,11,123.13	35,78,375
NIFTY	25-June-15	PE	8000	30	1,49,901	3,00,881.29	42,71,100

## Securities in Ban (22-06-2015)

Securities In Ban		
DISHTV	AMTECHAUTO	IBREALEST
-	-	-

## F&O Trade Statistics

Product	No Of Contracts	Turnover In Rs. ( Cr)	Put Call Ratio
Index Futures	7,03,412	16929.04	-
Stock Futures	9,60,814	24893.56	-
Index Options	93,43,456	2,00,609.77	0.96
Stock Options	4,73,998	12165.53	0.51
F&O Total	1,14,81,680	2,54,597.91	0.93

## FII Trading Activity (NSE & BSE) In Crores

CATEGORY	DATE	BUY VALUE	SELL VALUE	NET VALUE
FII	19-June-2015	6463	6569	<b>-106</b>

## DII Trading Activity (NSE & BSE) In Crores

CATEGORY	DATE	BUY VALUE	SELL VALUE	NET VALUE
DII	19-June-2015	1555	1107	<b>447</b>

## Corporate Actions (22 june2015)

**EX-Dividend-** Sonata ,Shriram transport

**Board Meeting (Purpose)**

Matru-Smriti,Shalimar Prod,Shree Surgovind (Quarterly results)

# TECHNICAL VIEW

## NIFTY

### DAILY PIVOT

SCRIPT	R4	R3	R2	R1	P	S1	S2	S3	S4
NIFTY	8097	8053	8028	8005	7972	7950	7917	7890	7840

### OUTLOOK

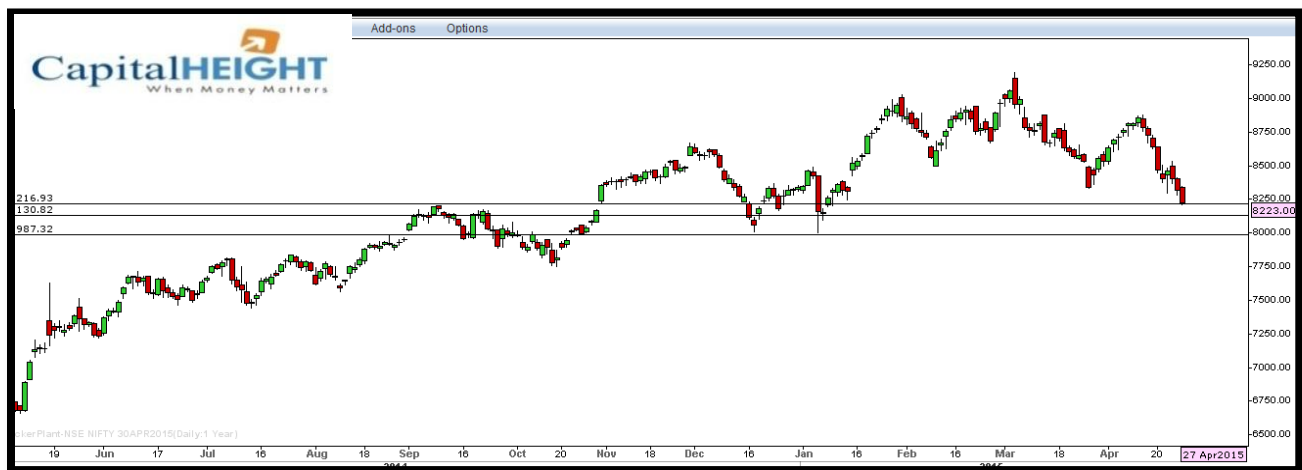
**Trend: - Consolidate**

**Resistance: -8020, 8050**

**Support: - 7950, 7890**

**Strategy: - Sell on highs**

## NIFTY DAILY





## BANK NIFTY

### DAILY PIVOT

SCRIPT	R4	R3	R2	R1	P	S1	S2	S3	S4
BANK NIFTY	18120	17940	17794	17647	17392	17245	16991	16735	16520

### OUTLOOK

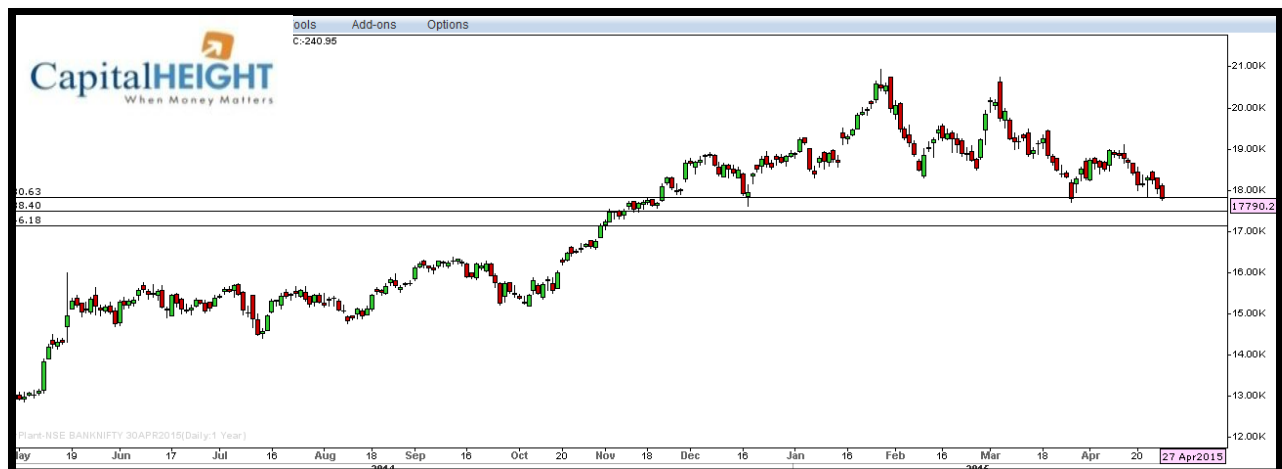
**Trend: - Consolidate**

**Resistance: - 17640, 17940**

**Support: - 17240, 16730**

**Strategy: - Sell on highs**

### BANK NIFTY DAILY



# Disclaimer

The information and views in this report, our website & all the service we provide are believed to be reliable, but we do not accept any responsibility (or liability) for errors of fact or opinion. Users have the right to choose the product/s that suits them the most.

Sincere efforts have been made to present the right investment perspective. The information contained herein is based on analysis and up on sources that we consider reliable.

**This material is for personal information and based upon it & takes no responsibility**

The information given herein should be treated as only factor, while making investment decision. The report does not provide individually tailor-made investment advice. Money CapitalHeight Research investment advisors Pvt. Ltd. recommends that investors independently evaluate particular investments and strategies, and encourages investors to seek the advice of a financial adviser. Money CapitalHeight Research investment advisors Pvt. Ltd. shall not be responsible for any transaction conducted based on the information given in this report, which is in violation of rules and regulations of NSE and BSE.

The share price projections shown are not necessarily indicative of future price performance. The information herein, together with all estimates and forecasts, can change without notice. Analyst or any person related to Money CapitalHeight Research investment advisors Pvt. Ltd. might be holding positions in the stocks recommended. It is understood that anyone who is browsing through the site has done so at his free will and does not read any views expressed as a recommendation for which either the site or its owners or anyone can be held responsible for. Any surfing and reading of the information is the acceptance of this disclaimer.

All Rights Reserved.

**Investment in Commodity and equity market has its own risks.**

We, however, do not vouch for the accuracy or the completeness thereof. **we are not responsible for any loss incurred whatsoever for any financial profits or loss which may arise from the recommendations above.** Money CapitalHeight Research investment advisors Pvt. Ltd. does not purport to be an invitation or an offer to buy or sell any financial instrument. **Our Clients (Paid Or Unpaid), Any third party or anyone else have no rights to forward or share our calls or SMS or Report or Any Information Provided by us to/with anyone which is received directly or indirectly by them. If found so then Serious Legal Actions can be taken.**