

# Daily Newsletter-Equity

24/06/2015



  
**CapitalHEIGHT**  
When Money Matters

[www.capitalheight.com](http://www.capitalheight.com)

# MARKET WRAP

- ▶ Indian markets ended green. Nifty up by 0.34% and Sensex up by 0.27%.
- ▶ Asia-Pacific ended green. Hang Seng up by 0.92% and Kospi up by 1.25%.
- ▶ Wall Street up. USD unemployment increased by 2k. Dow futures down by 22 pts.

Indian indices edged higher and ended on green note. On sectorial front Pharma, Banking, Metals sectors were highly up while Media and IT sectors were down. Sensex was up by 74 points at 27804 & Nifty went up by 28 points to settle at 8381 level. European markets traded upside.

## Stock Recommendation



### Capital Height's

Stock recommendation for 24/6/2015 is Maruti Ltd. In today's trading session it was up by 0.83 %. Its long term trend is up. On daily chart MACD & RSI has given buying confirmation. On daily chart its short term support level is 3945. All

the indicators are suggesting that one can go for long position in this stock above 4020 levels. The stock may test level of 4100-4200 in coming days.

Our recommendation on Maruti Ltd. is **long** above 4020 levels for target of 4100-4200.

# MARKET PERFORMANCE

## Sectorial Indices

INDEX	P. CLOSE	OPEN	HIGH	LOW	LAST	% CHANGE
CNX Nifty	8353.1	8377.45	8398.45	8334.95	8381.55	0.34
CNX Nifty Junior	19819.8	19869.15	19960.2	19777.05	19845.35	0.13
India VIX	15.4875	15.4875	16.5425	14.8275	15.04	-2.87
CNX 100	8427.45	8451.45	8474.8	8410.25	8453.40	0.31
CNX 500	6889.7	6909.3	6930.15	6877.5	6912.45	0.33
CNX Midcap	13046.2	13086.65	13161.7	13030	13088.15	0.32
Nifty Midcap 50	3260.3	3268.1	3295.5	3251.9	3283.40	0.71
Bank Nifty	18334.5	18414.55	18499.6	18287.25	18391.35	0.31
CNX Energy	8896.55	8903.8	8969.15	8888.3	8934.95	0.43
CNX FMCG	19653.65	19686.55	19761.2	19570.3	19737.10	0.42
CNX IT	11429.8	11473	11479.6	11327.2	11341.15	-0.78
CNX Media	2183.7	2173.05	2189.25	2158.25	2184.05	0.02
CNX Metal	2288.8	2294.5	2340.5	2291.25	2325.50	1.60
CNX MNC	9840.2	9870.4	9892.05	9821.7	9863.50	0.24
CNX Pharma	11879.35	11927.2	11972.4	11883.3	11910.25	0.26
CNX PSE	3527.95	3533.55	3573.55	3524.4	3558.45	0.86
CNX PSU Bank	3296.45	3335.95	3377.95	3315.1	3338.80	1.28
CNX Realty	183.25	184.60	185.35	182.50	183.65	0.22

## Index PE

Index PE	23 June 2015
Nifty	23.23
Sensex	22.52

## Nifty Stats

Market Breadth	NSE	BSE
Advance	33	1761
Decline	17	1251
Same	00	109

## Macro Economic Data

Economic Data	Current	Previous
Monthly Inflation (m-o-m)	5.20%	4.38%
IIP Growth (m-o-m)	5.00%	2.60%
Repo Rate	7.25%	7.50%
Reserve Repo Rate	7.00%	7.00%
CRR	4.00%	4.00%
GDP Growth (Q-o-Q)	7.50%	5.30%

## Index Movers (Pulling Up/Down)

Company Name	Contribution/Up	Company Name	Contribution/Down
Larsen	8.38	Lupin	-2.54
ITC	6.84	ICICI Bank	-2.64
HDFC	6.32	TCS	-2.92
M&M	3.3	Tata Motors	-3.14
Kotak Mahindra	3.02	Infosys	-13.45

## Nifty Gainers/ Losers

Symbol	Close Price	% Change	Symbol	Close Price	% Change
COALINDIA	414.90	3.80	HEROMOTOCO	2522.00	-2.31
PNB	143.05	3.62	INFY	1001.45	-2.19
ULTRACEMCO	2896.05	3.28	LUPIN	1769.00	-2.06
CIPLA	630.95	2.84	POWERGRID	139.50	-1.27
BANKBARODA	150.50	2.80	BHEL	244.05	-1.05

## 52 Week High/ Low

Symbol	Close Price	% Change	Symbol	Close Price	% Change
APLLTD	616.45	5.48	ADANIPOWER	27.40	-6.8
BAJFINANCE	4904.00	2.68	ALBK	90.15	0.33
CAMLINFINE	109.00	6.39	ANDHRACEMT	7.00	3.7
CHENNPETRO	152.80	6.26	AUSTRAL	0.50	0
CTE	30.45	5	BANKBARODA	139.00	-1.17

## Most Active Securities

Symbol	Close Price	% Change
SBIN	267.30	0.49
AXISBANK	571.00	-0.20
ICICIBANK	313.45	-0.51
RELIANCE	993.20	0.15
INFY	997.00	-0.49

## Asian Markets

Name	Open	High	Low	Current Value	Change	% Chg
Nikkei 225	20547.74	20809.42	20531.13	20809.42	381.23	1.83
Hang Seng	27126.47	27406.41	27008.51	27333.46	252.61	0.92
Taiwan	9375.78	9438.39	9375.78	9391.14	49.37	0.53
KOSPI	2071.30	2086.09	2066.21	2081.20	26.04	1.25
Jakarta	1512.23	1513.31	1500.97	1503.23	-0.83	-0.06

## DERIVATIVE CORNER

### Most Active Call Options

Symbol	Expiry Date	Option type	Strike price	LTP	Traded volume (Contracts)	Traded value (Lakhs)	Open Interest
NIFTY	25-June-15	CE	8600	65.85	3,34,180	7,24,819.71	25,83,250
NIFTY	25-June-15	CE	8500	103.70	3,15,472	6,79,600.82	25,95,950
NIFTY	25-June-15	CE	8700	39.30	2,07,886	4,54,554.17	25,80,875
NIFTY	25-June-15	CE	8800	22.35	1,96,920	4,34,521.21	37,14,275
NIFTY	25-June-15	CE	9000	7.30	1,61,868	3,64,532.81	36,65,225

### Most Active Put Options

Symbol	Expiry Date	Option type	Strike price	LTP	Traded volume (Contracts)	Traded value (Lakhs)	Open Interest
NIFTY	25-June-15	PE	8300	92.25	2,93,411	6,15,171.37	31,53,575
NIFTY	25-June-15	PE	8400	129.3	2,69,594	5,74,266.22	19,74,075
NIFTY	25-June-15	PE	8200	64.45	1,95,360	4,03,456.98	35,43,450
NIFTY	25-June-15	PE	8100	44.55	1,52,844	3,11,123.13	35,78,375
NIFTY	25-June-15	PE	8000	30	1,49,901	3,00,881.29	42,71,100

### Securities in Ban (24-06-2015)

Securities In Ban		
DISHTV	AMTECHAUTO	IBREALEST
CENTURYTXT	UNITECH	-

## F&O Trade Statistics

Product	No Of Contracts	Turnover In Rs. ( Cr)	Put Call Ratio
Index Futures	7,03,412	16929.04	-
Stock Futures	9,60,814	24893.56	-
Index Options	93,43,456	2,00,609.77	0.96
Stock Options	4,73,998	12165.53	0.51
<b>F&amp;O Total</b>	<b>1,14,81,680</b>	<b>2,54,597.91</b>	<b>0.93</b>

## FII Trading Activity (NSE & BSE) In Crores

CATEGORY	DATE	BUY VALUE	SELL VALUE	NET VALUE
FII	23-June-2015	3139	3514	<b>-374</b>

## DII Trading Activity (NSE & BSE) In Crores

CATEGORY	DATE	BUY VALUE	SELL VALUE	NET VALUE
DII	23-June-2015	1595	1191	<b>404</b>

## Corporate Actions (24 june2015)

**EX-Dividend-** Bhageria Dyeche, Berger Paints, Grindwell Norto, Geojit BNP

**Board Meeting (Purpose)**

Artech Power, Esaar (India), Golconda Engine, Splash Media, Prakash Ind(Quarterly results)

# TECHNICAL VIEW

## NIFTY

### DAILY PIVOT

SCRIPT	R4	R3	R2	R1	P	S1	S2	S3	S4
NIFTY	8420	8350	8278	8251	8223	8196	8168	8120	7940

### OUTLOOK

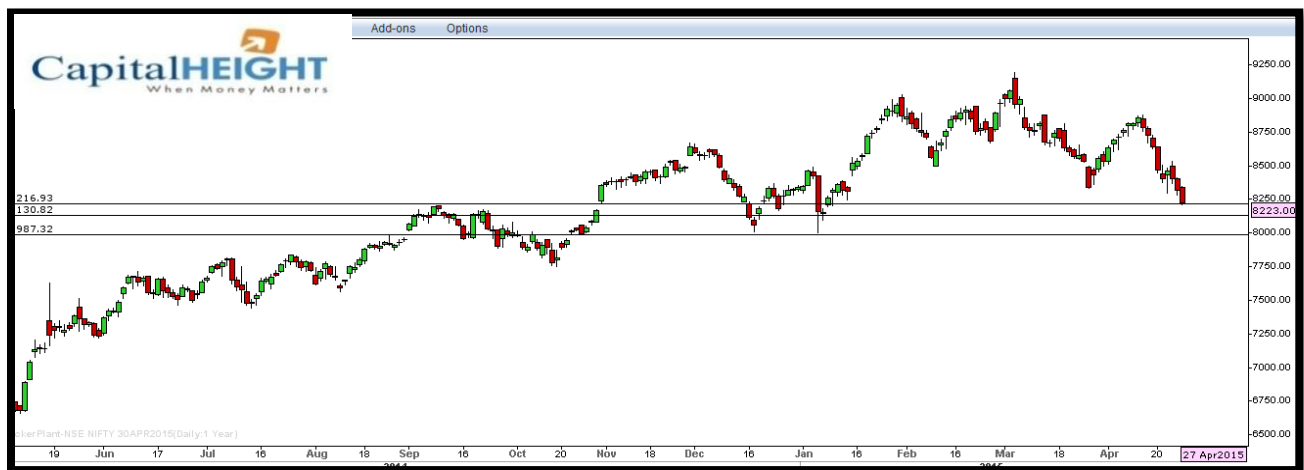
**Trend: - Consolidate**

**Resistance: - 8250, 8350**

**Support: - 8190, 8120**

**Strategy: - Sell on highs**

## NIFTY DAILY





## BANK NIFTY

### DAILY PIVOT

SCRIPT	R4	R3	R2	R1	P	S1	S2	S3	S4
BANK NIFTY	18450	18275	18163	18017	17833	17687	17503	17310	17040

### OUTLOOK

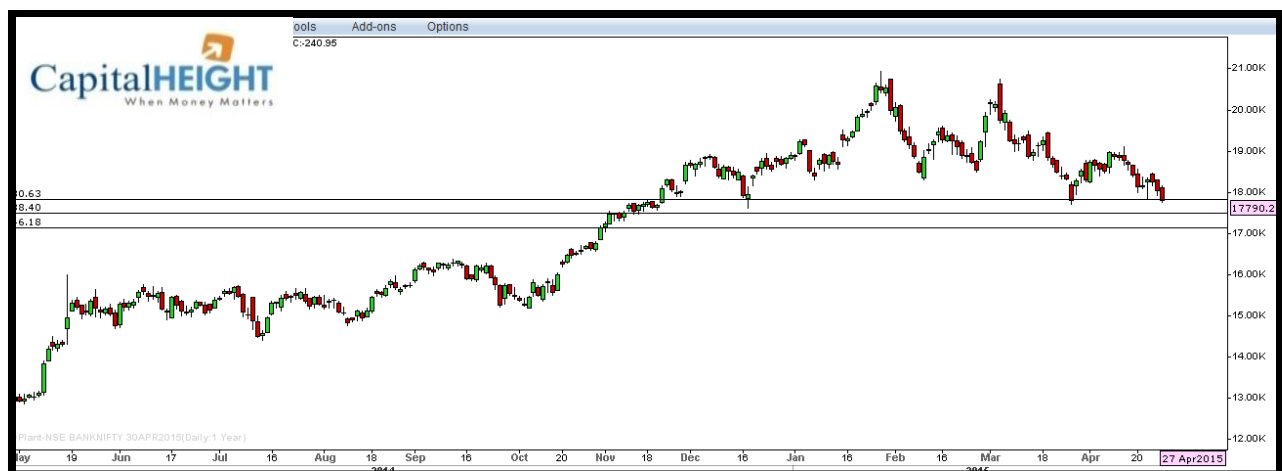
**Trend: - Consolidate**

**Resistance: - 18010, 18160**

**Support: - 17680, 17500**

**Strategy: - Sell on highs**

### BANK NIFTY DAILY



# Disclaimer

The information and views in this report, our website & all the service we provide are believed to be reliable, but we do not accept any responsibility (or liability) for errors of fact or opinion. Users have the right to choose the product/s that suits them the most.

Sincere efforts have been made to present the right investment perspective. The information contained herein is based on analysis and up on sources that we consider reliable.

**This material is for personal information and based upon it & takes no responsibility**

The information given herein should be treated as only factor, while making investment decision. The report does not provide individually tailor-made investment advice. Money CapitalHeight Research investment advisors Pvt. Ltd. recommends that investors independently evaluate particular investments and strategies, and encourages investors to seek the advice of a financial adviser. Money CapitalHeight Research investment advisors Pvt. Ltd. shall not be responsible for any transaction conducted based on the information given in this report, which is in violation of rules and regulations of NS E and BSE.

The share price projections shown are not necessarily indicative of future price performance. The information herein, together with all estimates and forecasts, can change without notice. Analyst or any person related to Money CapitalHeight Research investment advisors Pvt. Ltd. might be holding positions in the stocks recommended. It is understood that anyone who is browsing through the site has done so at his free will and does not read any views expressed as a recommendation for which either the site or its owners or anyone can be held responsible for. Any surfing and reading of the information is the acceptance of this disclaimer.

All Rights Reserved.

**Investment in Commodity and equity market has its own risks.**

We, however, do not vouch for the accuracy or the completeness thereof. **we are not responsible for any loss incurred whatsoever for any financial profits or loss which may arise from the recommendations above. Money CapitalHeight Research investment advisors Pvt. Ltd. does not purport to be an invitation or an offer to buy or sell any financial instrument. Our Clients (Paid Or Unpaid), Any third party or anyone else have no rights to forward or share our calls or SMS or Report or Any Information Provided by us to/with anyone which is received directly or indirectly by them. If found so then Serious Legal Actions can be taken.**