

Daily Newsletter-Equity

26/06/2015




CapitalHEIGHT
When Money Matters

www.capitalheight.com

MARKET WRAP

- ▶ Indian markets ended green. Nifty and Sensex went up by 0.44% and 0.60%.
- ▶ Asia-Pacific ended down. Hang Seng up by 0.95% and Kospi down by 0.02%.
- ▶ Wall Street down. USD unemployment increased by 2k. Dow fut. down by 42 pts.

Indian indices edged higher after a day of profit booking triggered by Greece concerns. In fact, equity benchmarks outperformed global peers by ignoring ongoing battle between Greece and creditors for debt solution. Sensex was up by 166 points at 27895 & Nifty went up by 37 points to settle at 8398 level. European markets traded downside.

Stock Recommendation



Capital Height's

Stock recommendation for 26/6/2015 is jubilant food. ltd. In today's trading session it was up by 2.81 %. Its long term trend is up. On daily chart MACD & RSI has given buying confirmation. On daily chart its short term support level

is 1785. All the indicators are suggesting that one can go for long position in this stock above 1855 levels. The stock may test level of 1900-1950 in coming days.

Our recommendation on Jubilant food Ltd. is **long** above 1855 levels for target of 1950.

MARKET PERFORMANCE

Sectorial Indices

INDEX	P. CLOSE	OPEN	HIGH	LOW	LAST	% CHANGE
CNX Nifty	8360.85	8336.25	8423.15	8329.5	8398.00	0.44
CNX Nifty Junior	19736.3	19687.8	19863.1	19674.7	19842.20	0.54
India VIX	15.915	15.915	16.7075	15.4775	15.93	0.09
CNX 100	8428.6	8404.4	8489.3	8399.45	8467.25	0.46
CNX 500	6887.8	6871.35	6930.9	6870.35	6917.55	0.43
CNX Midcap	12961.9	12942.9	13066.2	12926.35	13053.10	0.70
Nifty Midcap 50	3227.45	3215.95	3254	3209.35	3249.85	0.69
Bank Nifty	18365.55	18312.85	18539.15	18278.7	18492.90	0.69
CNX Energy	8881.75	8856.7	8972.7	8842.8	8953.05	0.80
CNX FMCG	19843.05	19726.8	19892.55	19690	19759.60	-0.42
CNX IT	11353.75	11332.45	11332.7	11188.55	11210.40	-1.26
CNX Media	2192.85	2190.55	2217.95	2179.8	2204.75	0.54
CNX Metal	2292.25	2285.6	2305.3	2281.55	2299.80	0.33
CNX MNC	9889.05	9856.95	9941.25	9847.35	9882.75	-0.06
CNX Pharma	11997.55	11990	12054.8	11973.65	12007.25	0.08
CNX PSE	3542.35	3533.45	3553.7	3529.9	3545.05	0.08
CNX PSU Bank	3259.75	3242.35	3287.45	3213.5	3276.70	0.52
CNX Realty	181.25	179.95	183.50	179.10	182.40	0.63

Index PE

Index PE	25 June 2015
Nifty	23.27
Sensex	22.60

Nifty Stats

Market Breadth	NSE	BSE
Advance	31	1306
Decline	18	1348
Same	00	131

Macro Economic Data

Economic Data	Current	Previous
Monthly Inflation (m-o-m)	5.20%	4.38%
IIP Growth (m-o-m)	5.00%	2.60%
Repo Rate	7.25%	7.50%
Reserve Repo Rate	7.00%	7.00%
CRR	4.00%	4.00%
GDP Growth (Q-o-Q)	7.50%	5.30%

Index Movers (Pulling Up/Down)

Company Name	Contribution/Up	Company Name	Contribution/Down
Larsen	13.27	Wipro	-2.75
HDFC	11.03	HUL	-2.83
HDFC Bank	10.81	ONGC	-2.97
Reliance	6.82	TCS	-3.35
Bajaj Auto	4.53	ICICI Bank	-4.80

Nifty Gainers/ Losers

Symbol	Close Price	% Change	Symbol	Close Price	% Change
BAJAJ-AUTO	2510.00	4.91	TECHM	530.30	-2.75
LT	1814.75	3.51	WIPRO	553.10	-2.18
CAIRN	187.90	3.27	ONGC	313.00	-1.54
INDUSINDBK	868.40	2.83	CIPLA	612.60	-1.47
GAIL	409.25	2.50	HINDUNILVR	887.00	-1.07

52 Week High/ Low

Symbol	Close Price	% Change	Symbol	Close Price	% Change
ASHIMASYN	12.75	4.94	ANDHRACEMT	6.65	0
CASTEXTECH	212.00	3.62	AUSTRAL	0.50	0
CTE	35.85	4.98	BALLARPUR	12.75	0.79
EVEREADY	335.70	-1.22	BIRLACOT	0.10	100
GEECEE	64.15	5.68	CCCL	3.55	1.43

Most Active Securities

Symbol	Close Price	% Change
AUROPHARMA	1435.00	-0.57
RELIANCE	1006.80	1.60
SUNPHARMA	868.90	-0.25
ICICIBANK	315.70	-0.65
LT	1814.75	3.51

Asian Markets

Name	Open	High	Low	Current Value	Change	% Chg
Nikkei 225	20777.69	20866.58	20758.60	20771.40	-96.63	-0.47
Hang Seng	27329.17	27350.49	27120.72	27145.75	-259.22	-0.95
Taiwan	9415.78	9500.57	9415.78	9476.34	79.03	0.83
KOSPI	2077.84	2088.16	2073.95	2085.06	-0.47	-0.02
Jakarta	1517.35	1523.42	1512.76	1519.47	1.21	0.08

DERIVATIVE CORNER

Most Active Call Options

Symbol	Expiry Date	Option type	Strike price	LTP	Traded volume (Contracts)	Traded value (Lakhs)	Open Interest
NIFTY	25-June-15	CE	8600	65.85	3,34,180	7,24,819.71	25,83,250
NIFTY	25-June-15	CE	8500	103.70	3,15,472	6,79,600.82	25,95,950
NIFTY	25-June-15	CE	8700	39.30	2,07,886	4,54,554.17	25,80,875
NIFTY	25-June-15	CE	8800	22.35	1,96,920	4,34,521.21	37,14,275
NIFTY	25-June-15	CE	9000	7.30	1,61,868	3,64,532.81	36,65,225

Most Active Put Options

Symbol	Expiry Date	Option type	Strike price	LTP	Traded volume (Contracts)	Traded value (Lakhs)	Open Interest
NIFTY	25-June-15	PE	8300	92.25	2,93,411	6,15,171.37	31,53,575
NIFTY	25-June-15	PE	8400	129.3	2,69,594	5,74,266.22	19,74,075
NIFTY	25-June-15	PE	8200	64.45	1,95,360	4,03,456.98	35,43,450
NIFTY	25-June-15	PE	8100	44.55	1,52,844	3,11,123.13	35,78,375
NIFTY	25-June-15	PE	8000	30	1,49,901	3,00,881.29	42,71,100

Securities in Ban (26-06-2015)

Securities In Ban		
DISHTV	AMTECHAUTO	UNITECH
-	-	-

F&O Trade Statistics

Product	No Of Contracts	Turnover In Rs. (Cr)	Put Call Ratio
Index Futures	6,23,942	15583.42	-
Stock Futures	11,02,078	29263.04	-
Index Options	96,07,731	2,10,172.96	1.26
Stock Options	4,97,892	13419.87	0.55
F&O Total	1,18,31,643	2,68,439.30	1.21

FII Trading Activity (NSE & BSE) In Crores

CATEGORY	DATE	BUY VALUE	SELL VALUE	NET VALUE
FII	25-June-2015	3139	3514	-374

DII Trading Activity (NSE & BSE) In Crores

CATEGORY	DATE	BUY VALUE	SELL VALUE	NET VALUE
DII	25-June-2015	1595	1191	404

Corporate Actions (25 june2015)

EX-Dividend- Alkyl Amines, Kansai Nerolac, Siyaram Silk

Board Meeting (Purpose)

Gallantt Ispat, Pioneer Agro, Shriram EPC (Quarterly results)

TECHNICAL VIEW

NIFTY

DAILY PIVOT

SCRIPT	R4	R3	R2	R1	P	S1	S2	S3	S4
NIFTY	8420	8350	8278	8251	8223	8196	8168	8120	7940

OUTLOOK

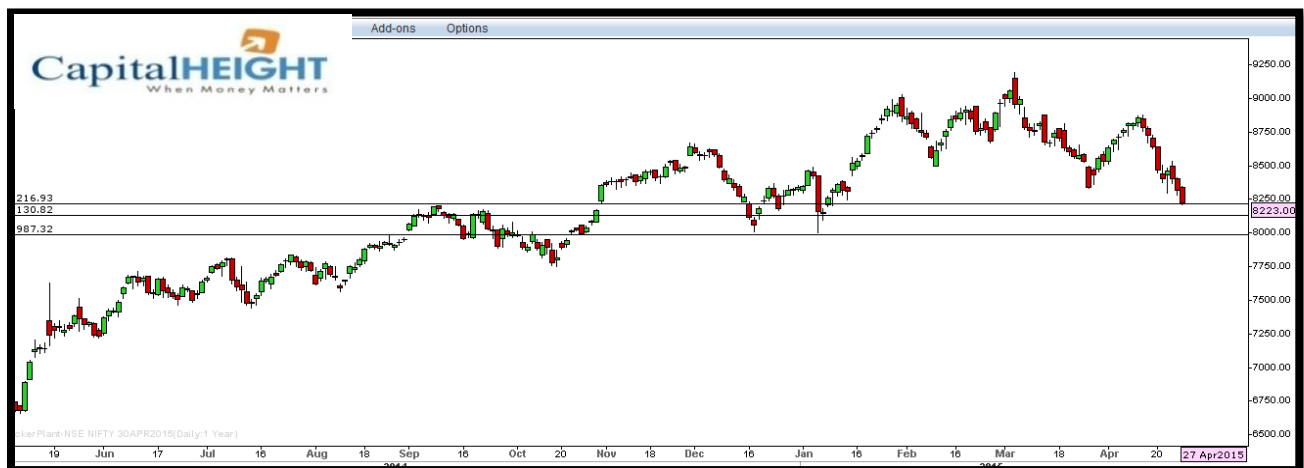
Trend: - Consolidate

Resistance: -8250, 8350

Support: - 8190, 8120

Strategy: - Sell on highs

NIFTY DAILY



BANK NIFTY

DAILY PIVOT

SCRIPT	R4	R3	R2	R1	P	S1	S2	S3	S4
BANK NIFTY	18450	18275	18163	18017	17833	17687	17503	17310	17040

OUTLOOK

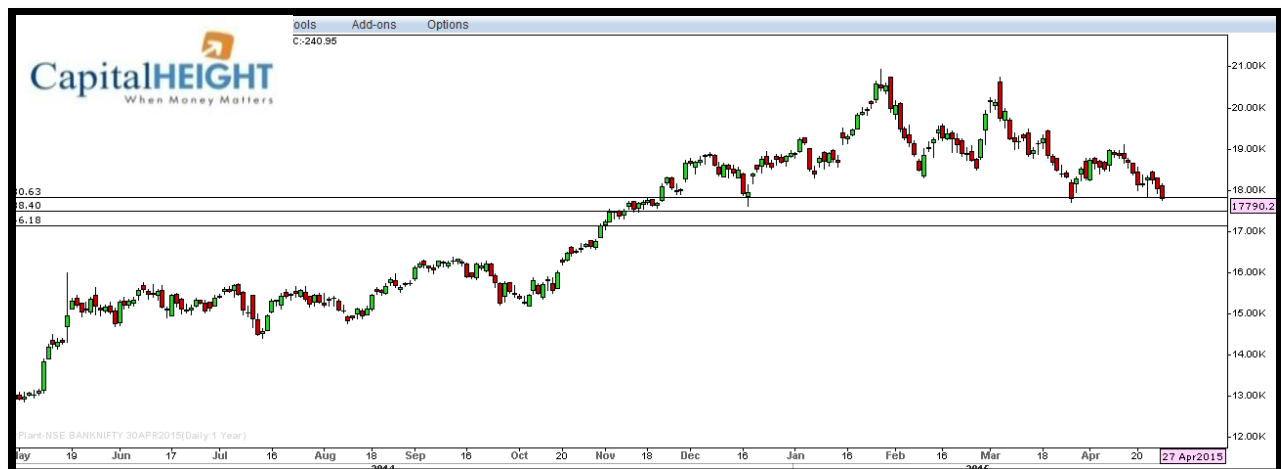
Trend: - Consolidate

Resistance: - 18010, 18160

Support: - 17680, 17500

Strategy: - Sell on highs

BANK NIFTY DAILY



Disclaimer

The information and views in this report, our website & all the service we provide are believed to be reliable, but we do not accept any responsibility (or liability) for errors of fact or opinion. Users have the right to choose the product/s that suits them the most.

Sincere efforts have been made to present the right investment perspective. The information contained herein is based on analysis and up on sources that we consider reliable.

This material is for personal information and based upon it & takes no responsibility

The information given herein should be treated as only factor, while making investment decision. The report does not provide individually tailor-made investment advice. Money CapitalHeight Research investment advisors Pvt. Ltd. recommends that investors independently evaluate particular investments and strategies, and encourages investors to seek the advice of a financial adviser. Money CapitalHeight Research investment advisors Pvt. Ltd. shall not be responsible for any transaction conducted based on the information given in this report, which is in violation of rules and regulations of NSE and BSE.

The share price projections shown are not necessarily indicative of future price performance. The information herein, together with all estimates and forecasts, can change without notice. Analyst or any person related to Money CapitalHeight Research investment advisors Pvt. Ltd. might be holding positions in the stocks recommended. It is understood that anyone who is browsing through the site has done so at his free will and does not read any views expressed as a recommendation for which either the site or its owners or anyone can be held responsible for. Any surfing and reading of the information is the acceptance of this disclaimer.

All Rights Reserved.

Investment in Commodity and equity market has its own risks.

We, however, do not vouch for the accuracy or the completeness thereof. **we are not responsible for any loss incurred whatsoever for any financial profits or loss which may arise from the recommendations above.** Money CapitalHeight Research investment advisors Pvt. Ltd. does not purport to be an invitation or an offer to buy or sell any financial instrument. **Our Clients (Paid Or Unpaid), Any third party or anyone else have no rights to forward or share our calls or SMS or Report or Any Information Provided by us to/with anyone which is received directly or indirectly by them. If found so then Serious Legal Actions can be taken.**