

# Daily Newsletter-Equity

1/07/2015



  
**CapitalHEIGHT**  
When Money Matters

[www.capitalheight.com](http://www.capitalheight.com)

# MARKET WRAP

- ▶ Indian markets ended up. Nifty and Sensex went up by 0.60% and 0.49%.
- ▶ Asia-Pacific ended up. Hang Seng up by 1.08% and Kospi down by 0.66%.
- ▶ Wall Street down. USD unemployment increased by 2k. Dow fut. down by 52 pts.

Indian indices gained strength supported by short covering in healthcare, FMCG and select metals stocks. The hope of solution to Greece's debt issue before its deadline ends also aided sentiment. Sensex was up by 135 points at 27780 & Nifty went up by 50 points to settle at 8368 level. European markets traded upside.

## Stock Recommendation



### Capital Height's

Stock recommendation for 1/7/2015 is Ajantapharma ltd. In today's trading session it was up by 2.92 %. Its long term trend is up. On daily chart MACD & RSI has given buying confirmation. On daily chart its short term support level

is 1524. All the indicators are suggesting that one can go for long position in this stock above 1570 levels. The stock may test level of 1600-1650 in coming days.

Our recommendation on Ajanta pharma is **long** above 1570 levels for target of 1650.

# MARKET PERFORMANCE

## Sectorial Indices

INDEX	P. CLOSE	OPEN	HIGH	LOW	LAST	% CHANGE
CNX Nifty	8318.4	8316.35	8378	8298.95	8368.50	0.60
CNX Nifty Junior	19588.2	19621.85	19832.2	19606.7	19825.45	1.21
India VIX	17.2975	17.2975	17.8375	16.7775	16.93	-2.14
CNX 100	8382.65	8383.15	8449.3	8368.65	8440.95	0.70
CNX 500	6843.95	6844.2	6900.05	6843.35	6897.20	0.78
CNX Midcap	12863.65	12867.25	13020.6	12867.25	13009.65	1.13
Nifty Midcap 50	3188.35	3182.35	3213.6	3182.35	3212.45	0.76
Bank Nifty	18241.25	18204.85	18342.5	18086.8	18296.10	0.30
CNX Energy	8854.85	8851.7	8905.05	8825.85	8892.95	0.43
CNX FMCG	19755.55	19806.55	20182.4	19806.55	20155.75	2.03
CNX IT	11133.65	11101.6	11144.2	11016.75	11037.40	-0.86
CNX Media	2180.75	2178.45	2242.05	2178.45	2237.85	2.62
CNX Metal	2245.8	2249.95	2292.6	2249.95	2287.30	1.85
CNX MNC	9852.95	9882.15	9999.35	9881.9	9983.95	1.33
CNX Pharma	11926.4	11949.25	12226.75	11936	12202.55	2.32
CNX PSE	3500.45	3504.35	3527.15	3500.65	3520.50	0.57
CNX PSU Bank	3205.25	3193.45	3231.75	3180.35	3228.20	0.72
CNX Realty	180.15	179.15	181.60	179.15	180.95	0.44

## Index PE

Index PE	30 June 2015
Nifty	23.19
Sensex	22.31

## Nifty Stats

Market Breadth	NSE	BSE
Advance	35	1721
Decline	15	973
Same	00	127

## Macro Economic Data

Economic Data	Current	Previous
Monthly Inflation (m-o-m)	5.20%	4.38%
IIP Growth (m-o-m)	5.00%	2.60%
Repo Rate	7.25%	7.50%
Reserve Repo Rate	7.00%	7.00%
CRR	4.00%	4.00%
GDP Growth (Q-o-Q)	7.50%	5.30%

## Index Movers (Pulling Up/Down)

Company Name	Contribution/Up	Company Name	Contribution/Down
ITC	7.61	Axis Bank	-1.63
Sun Pharma	6.29	Larsen	-1.69
Idea Cellular	5.63	Infosys	-2.95
HDFC Bank	5.5	ICICI Bank	-4.84
HDFC	4.5	TCS	-6.43

## Nifty Gainers/ Losers

Symbol	Close Price	% Change	Symbol	Close Price	% Change
ZEEL	369.40	3.72	TCS	2555.00	-1.46
IDEA	176.25	3.59	TECHM	476.70	-1.38
TATASTEEL	306.30	3.37	WIPRO	545.25	-1.29
COALINDIA	420.70	3.19	GAIL	392.50	-1.17
ULTRACEMCO	2996.05	3.14	ICICIBANK	308.00	-1.03

## 52 Week High/ Low

Symbol	Close Price	% Change	Symbol	Close Price	% Change
ASHIMASYN	12.75	4.94	ANDHRACEMT	6.65	0
CASTEXTech	212.00	3.62	AUSTRAL	0.50	0
CTE	35.85	4.98	BALLARPUR	12.75	0.79
EVEREADY	335.70	-1.22	BIRLACOT	0.10	100
GEECEE	64.15	5.68	CCCL	3.55	1.43

## Most Active Securities

Symbol	Close Price	% Change
TECHM	476.70	-1.38
RELIANCE	999.00	0.82
ICICIBANK	308.00	-1.03
HDFC	1298.00	0.97
COALINDIA	420.70	3.19

## Asian Markets

Name	Open	High	Low	Current Value	Change	% Chg
Nikkei 225	20758.43	20785.76	20650.00	20706.15	-65.25	-0.32
Hang Seng	27016.09	27016.09	26522.45	26663.87	-481.88	-1.81
Taiwan	9481.95	9489.91	9442.94	9462.57	-13.77	-0.15
KOSPI	2083.40	2097.01	2080.79	2090.26	5.20	0.25
Jakarta	1520.92	1524.59	1516.96	1518.03	-1.44	-0.09

# DERIVATIVE CORNER

## Most Active Call Options

Symbol	Expiry Date	Option type	Strike price	LTP	Traded volume (Contracts)	Traded value (Lakhs)	Open Interest
NIFTY	30-July-15	CE	8600	65.85	3,34,180	7,24,819.71	25,83,250
NIFTY	30-July-15	CE	8500	103.70	3,15,472	6,79,600.82	25,95,950
NIFTY	30-July-15	CE	8700	39.30	2,07,886	4,54,554.17	25,80,875
NIFTY	30-July-15	CE	8800	22.35	1,96,920	4,34,521.21	37,14,275
NIFTY	30-July-15	CE	9000	7.30	1,61,868	3,64,532.81	36,65,225

## Most Active Put Options

Symbol	Expiry Date	Option type	Strike price	LTP	Traded volume (Contracts)	Traded value (Lakhs)	Open Interest
NIFTY	30-July-15	PE	8300	92.25	2,93,411	6,15,171.37	31,53,575
NIFTY	30-July-15	PE	8400	129.3	2,69,594	5,74,266.22	19,74,075
NIFTY	30-July-15	PE	8200	64.45	1,95,360	4,03,456.98	35,43,450
NIFTY	30-July-15	PE	8100	44.55	1,52,844	3,11,123.13	35,78,375
NIFTY	30-July-15	PE	8000	30	1,49,901	3,00,881.29	42,71,100

## Securities in Ban (1-07-2015)

Securities In Ban		
-	Nil	-
-	-	-

## F&O Trade Statistics

Product	No Of Contracts	Turnover In Rs. ( Cr)	Put Call Ratio
Index Futures	6,23,942	15583.42	-
Stock Futures	11,02,078	29263.04	-
Index Options	96,07,731	2,10,172.96	1.26
Stock Options	4,97,892	13419.87	0.55
<b>F&amp;O Total</b>	<b>1,18,31,643</b>	<b>2,68,439.30</b>	<b>1.21</b>

## FII Trading Activity (NSE & BSE) In Crores

CATEGORY	DATE	BUY VALUE	SELL VALUE	NET VALUE
FII	30-June-2015	3139	3514	<b>-374</b>

## DII Trading Activity (NSE & BSE) In Crores

CATEGORY	DATE	BUY VALUE	SELL VALUE	NET VALUE
DII	30-June-2015	1595	1191	<b>404</b>

## Corporate Actions (1 july2015)

**EX-Dividend-** Nil

**Board Meeting (Purpose)**

Nimbus projects

(Quarterly results)

# TECHNICAL VIEW

## NIFTY

### DAILY PIVOT

SCRIPT	R4	R3	R2	R1	P	S1	S2	S3	S4
NIFTY	8420	8350	8278	8251	8223	8196	8168	8120	7940

### OUTLOOK

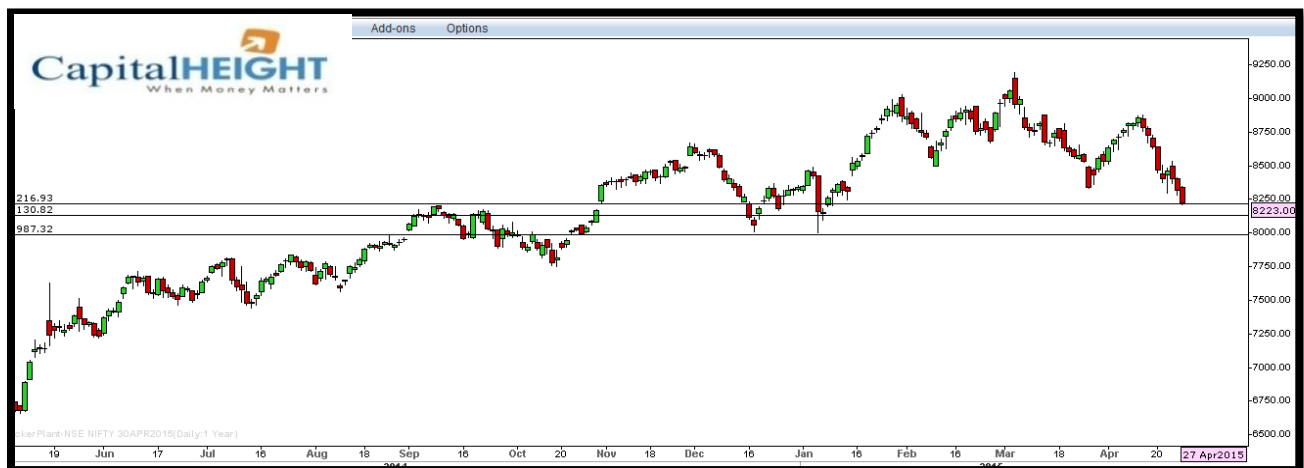
**Trend: - Consolidate**

**Resistance: -8250, 8350**

**Support: - 8190, 8120**

**Strategy: - Sell on highs**

## NIFTY DAILY





## BANK NIFTY

### DAILY PIVOT

SCRIPT	R4	R3	R2	R1	P	S1	S2	S3	S4
BANK NIFTY	18450	18275	18163	18017	17833	17687	17503	17310	17040

### OUTLOOK

**Trend: - Consolidate**

**Resistance: - 18010, 18160**

**Support: - 17680, 17500**

**Strategy: - Sell on highs**

### BANK NIFTY DAILY



# Disclaimer

The information and views in this report, our website & all the service we provide are believed to be reliable, but we do not accept any responsibility (or liability) for errors of fact or opinion. Users have the right to choose the product/s that suits them the most.

Sincere efforts have been made to present the right investment perspective. The information contained herein is based on analysis and up on sources that we consider reliable.

**This material is for personal information and based upon it & takes no responsibility**

The information given herein should be treated as only factor, while making investment decision. The report does not provide individually tailor-made investment advice. Money CapitalHeight Research investment advisors Pvt. Ltd. recommends that investors independently evaluate particular investments and strategies, and encourages investors to seek the advice of a financial adviser. Money CapitalHeight Research investment advisors Pvt. Ltd. shall not be responsible for any transaction conducted based on the information given in this report, which is in violation of rules and regulations of NSE and BSE.

The share price projections shown are not necessarily indicative of future price performance. The information herein, together with all estimates and forecasts, can change without notice. Analyst or any person related to Money CapitalHeight Research investment advisors Pvt. Ltd. might be holding positions in the stocks recommended. It is understood that anyone who is browsing through the site has done so at his free will and does not read any views expressed as a recommendation for which either the site or its owners or anyone can be held responsible for. Any surfing and reading of the information is the acceptance of this disclaimer.

All Rights Reserved.

**Investment in Commodity and equity market has its own risks.**

We, however, do not vouch for the accuracy or the completeness thereof. **we are not responsible for any loss incurred whatsoever for any financial profits or loss which may arise from the recommendations above.** Money CapitalHeight Research investment advisors Pvt. Ltd. does not purport to be an invitation or an offer to buy or sell any financial instrument. **Our Clients (Paid Or Unpaid), Any third party or anyone else have no rights to forward or share our calls or SMS or Report or Any Information Provided by us to/with anyone which is received directly or indirectly by them. If found so then Serious Legal Actions can be taken.**