

Daily Newsletter-Equity

20/07/2015




CapitalHEIGHT
When Money Matters

www.capitalheight.com

MARKET WRAP

- ▶ Indian markets edged higher. Nifty and Sensex went up by 0.02% and 0.06%.
- ▶ Asia-Pacific mkts.mixed. Hang Seng up by 0.99% and Kospi down by 0.53%.
- ▶ Wall Street up.USD unemployment increased by 10k. Dow fut. down by 42 pts.

Indian indices closed on flat note after consolidated and sluggish session. On sectorial front Health care, Metals, Technology and Auto sectors were up while FMCG and Banking sectors were down. Sensex was up by 17 points to settle at 28463 & Nifty went up by 2 points to settle at 8609 level. European markets traded upside.

Stock Recommendation



Capital Height's

Stock recommendation for 20/7/2015 is Ajanta pharma ltd. In today's trading session it was up by 3.74%. Its long term trend is up. On daily chart MACD & RSI has given buying confirmation. On daily chart its short term support level

is 1672. All the indicators are suggesting that one can go for long position in this stock above 1695 levels. The stock may test level of 1730-1760 in coming days.

Our recommendation on Ajanta Pharma Ltd. is **long** above 1695 levels for tgt of 1750.

MARKET PERFORMANCE

Sectorial Indices

INDEX	P. CLOSE	OPEN	HIGH	LOW	LAST	% CHANGE
CNX Nifty	8459.65	8470.6	8480.25	8424.1	8454.10	-0.07
CNX Nifty Junior	20463.3	20521.75	20580.45	20454.65	20505.95	0.21
India VIX	16.2725	16.2725	16.615	14.695	16.01	-1.61
CNX 100	8560.45	8573.65	8584.25	8532.7	8558.55	-0.02
CNX 500	7016.55	7030.65	7042.4	7002	7020.25	0.05
CNX Midcap	13433.45	13469.25	13520	13431.1	13469.75	0.27
Nifty Midcap 50	3369.1	3378.2	3401.25	3369.65	3384.30	0.45
Bank Nifty	18893.55	18913.75	18940.85	18734.4	18780.20	-0.60
CNX Energy	8820.55	8834.4	8862.55	8781.35	8797.75	-0.26
CNX FMCG	20133.4	20134.3	20229.7	20080.75	20184.45	0.25
CNX IT	10998.85	11024.4	11067.55	10945.05	11043.85	0.41
CNX Media	2282.35	2289.8	2304.85	2268.25	2299.75	0.76
CNX Metal	2189.3	2194.4	2211.3	2190.7	2205.10	0.72
CNX MNC	10102.8	10118.75	10177.25	10082.45	10156.00	0.53
CNX Pharma	12697.8	12735.25	12805.05	12691.95	12786.60	0.70
CNX PSE	3525.85	3531.2	3569.65	3525.95	3564.05	1.08
CNX PSU Bank	3404.6	3405.2	3410.5	3348.65	3358.10	-1.37
CNX Realty	181.15	181.75	182.20	179.35	180.05	-0.61

Index PE

Index PE	17 July 2015
Nifty	23.87
Sensex	22.94

Nifty Stats

Market Breadth	NSE	BSE
Advance	32	1401
Decline	16	1423
Same	02	145

Macro Economic Data

Economic Data	Current	Previous
Monthly Inflation (m-o-m)	5.20%	4.38%
IIP Growth (m-o-m)	5.00%	2.60%
Repo Rate	7.25%	7.50%
Reserve Repo Rate	7.00%	7.00%
CRR	4.00%	4.00%
GDP Growth (Q-o-Q)	7.50%	5.30%

Index Movers (Pulling Up/Down)

Company Name	Contribution/Up	Company Name	Contribution/Down
HDFC	9.34	Cairn India	-0.44
TCS	7.4	BPCL	-0.73
Infosys	6.78	Bosch	-0.81
Reliance	6.48	Yes Bank	-0.88
Tata Motors	5.41	HCL Tech	-1.04

Nifty Gainers/ Losers

Symbol	Close Price	% Change	Symbol	Close Price	% Change
MARUTI	4151.55	2.49	CAIRN	168.25	-1.23
HDFC	1337.80	2.48	YESBANK	804.60	-0.91
TATAPOWER	74.60	2.26	PNB	143.45	-0.86
WIPRO	578.00	2.23	HCLTECH	947.50	-0.78
ULTRACEMCO	3204.75	2.13	BPCL	921.70	-0.57

52 Week High/ Low

Symbol	Close Price	% Change	Symbol	Close Price	% Change
HCLTECH	961.55	3.88	ONGC	291.00	-0.99
BPCL	913.40	3.59	LT	1860.60	-0.84
INDUSINDBK	926.95	3.58	BANKBARODA	156.25	-0.13
ZEEL	373.80	3.50	-	-	-
GAIL	372.00	3.08	-	-	-

Most Active Securities

Symbol	Close Price	% Change
TATAMOTORS	394.10	2.11
RELIANCE	1008.85	1.11
ABAN	327.65	1.82
HDFC	1337.80	2.48
INFY	950.60	1.40

Asian Markets

Name	Open	High	Low	Current Value	Change	% Chg
Nikkei 225	20478.85	20496.60	20401.09	20463.33	78.00	0.38
Hang Seng	25219.45	25219.45	24862.65	25055.76	-65.15	-0.26
Taiwan	9063.54	9089.47	9005.10	9054.20	12.44	0.14
KOSPI	2068.38	2079.90	2060.66	2072.91	13.68	0.66
Jakarta	1490.99	1496.17	1486.74	1486.74	-1.66	-0.11

DERIVATIVE CORNER

Most Active Call Options

Symbol	Expiry Date	Option type	Strike price	LTP	Traded volume (Contracts)	Traded value (Lakhs)	Open Interest
NIFTY	30-July-15	CE	8600	65.85	3,34,180	7,24,819.71	25,83,250
NIFTY	30-July-15	CE	8500	103.70	3,15,472	6,79,600.82	25,95,950
NIFTY	30-July-15	CE	8700	39.30	2,07,886	4,54,554.17	25,80,875
NIFTY	30-July-15	CE	8800	22.35	1,96,920	4,34,521.21	37,14,275
NIFTY	30-July-15	CE	9000	7.30	1,61,868	3,64,532.81	36,65,225

Most Active Put Options

Symbol	Expiry Date	Option type	Strike price	LTP	Traded volume (Contracts)	Traded value (Lakhs)	Open Interest
NIFTY	30-July-15	PE	8300	92.25	2,93,411	6,15,171.37	31,53,575
NIFTY	30-July-15	PE	8400	129.3	2,69,594	5,74,266.22	19,74,075
NIFTY	30-July-15	PE	8200	64.45	1,95,360	4,03,456.98	35,43,450
NIFTY	30-July-15	PE	8100	44.55	1,52,844	3,11,123.13	35,78,375
NIFTY	30-July-15	PE	8000	30	1,49,901	3,00,881.29	42,71,100

Securities in Ban (20-07-2015)

Securities In Ban		
INDIACEMENT	AMTECHAUTO	-
-	-	-

F&O Trade Statistics

Product	No Of Contracts	Turnover In Rs. (Cr)	Put Call Ratio
Index Futures	6,81,155	17901.11	-
Stock Futures	8,49,270	23599.04	-
Index Options	69,46,511	1,55,990.24	0.94
Stock Options	4,08,013	11465.42	0.49
F&O Total	88,84,949	2,08,955.81	0.91

FII Trading Activity (NSE & BSE) In Crores

CATEGORY	DATE	BUY VALUE	SELL VALUE	NET VALUE
FII	17-July-2015	3347	2742	605

DII Trading Activity (NSE & BSE) In Crores

CATEGORY	DATE	BUY VALUE	SELL VALUE	NET VALUE
DII	17-July-2015	1331	1507	-175

Corporate Actions (20july2015)

EX-Dividend- Smartlink Net,Gabriel India,Hatsun Agro

Board Meeting (Purpose)

Dhruv Estates,Dishman Pharma ,GIC Housing Fin (Quarterly results)

TECHNICAL VIEW

NIFTY

DAILY PIVOT

SCRIPT	R4	R3	R2	R1	P	S1	S2	S3	S4
NIFTY	8840	8740	8662	8635	8589	8561	8515	8470	8390

OUTLOOK

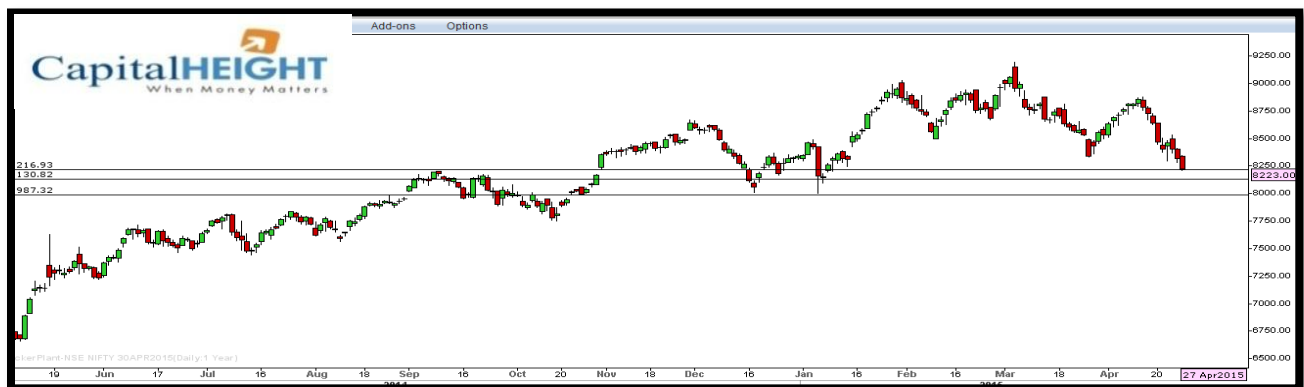
Trend: - Consolidate

Resistance: -8630, 8740

Support: - 8560, 8510

Strategy: - Buy on dips

NIFTY DAILY



BANK NIFTY

DAILY PIVOT

SCRIPT	R4	R3	R2	R1	P	S1	S2	S3	S4
BANK NIFTY	19800	19560	19485	19358	19122	18994	18758	18650	18435

OUTLOOK

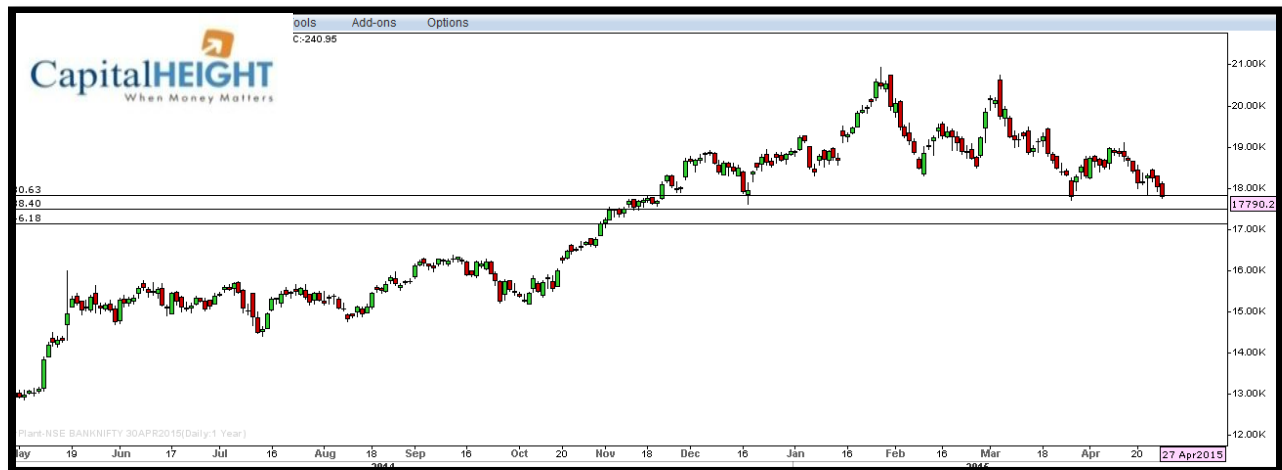
Trend: - Consolidate

Resistance: - 19350, 19480

Support: - 18990, 18750

Strategy: - Buy on dips

BANK NIFTY DAILY



Disclaimer

The information and views in this report, our website & all the service we provide are believed to be reliable, but we do not accept any responsibility (or liability) for errors of fact or opinion. Users have the right to choose the product/s that suits them the most.

Sincere efforts have been made to present the right investment perspective. The information contained herein is based on analysis and up on sources that we consider reliable.

This material is for personal information and based upon it & takes no responsibility

The information given herein should be treated as only factor, while making investment decision. The report does not provide individually tailor-made investment advice. Money CapitalHeight Research investment advisors Pvt. Ltd. recommends that investors independently evaluate particular investments and strategies, and encourages investors to seek the advice of a financial adviser. Money CapitalHeight Research investment advisors Pvt. Ltd. shall not be responsible for any transaction conducted based on the information given in this report, which is in violation of rules and regulations of NSE and BSE.

The share price projections shown are not necessarily indicative of future price performance. The information herein, together with all estimates and forecasts, can change without notice. Analyst or any person related to Money CapitalHeight Research investment advisors Pvt. Ltd. might be holding positions in the stocks recommended. It is understood that anyone who is browsing through the site has done so at his free will and does not read any views expressed as a recommendation for which either the site or its owners or anyone can be held responsible for. Any surfing and reading of the information is the acceptance of this disclaimer.

All Rights Reserved.

Investment in Commodity and equity market has its own risks.

We, however, do not vouch for the accuracy or the completeness thereof. **we are not responsible for any loss incurred whatsoever for any financial profits or loss which may arise from the recommendations above.** Money CapitalHeight Research investment advisors Pvt. Ltd. does not purport to be an invitation or an offer to buy or sell any financial instrument. **Our Clients (Paid Or Unpaid), Any third party or anyone else have no rights to forward or share our calls or SMS or Report or Any Information Provided by us to/with anyone which is received directly or indirectly by them. If found so then Serious Legal Actions can be taken.**