

Daily Newsletter-Equity

21/07/2015




CapitalHEIGHT
When Money Matters

www.capitalheight.com

MARKET WRAP

- ▶ Indian markets edged lower. Nifty and Sensex went down by 0.08% and 0.15%.
- ▶ Asia-Pacific mkts.mixed. Hang Seng down by 0.04% and Kospi down by 0.15%.
- ▶ Wall Street up.USD unemployment increased by 10k. Dow fut. down by 50 pts.

Indian indices closed on weak note on the back of profit booking after continuous buying in 3 sessions.On sectorial front Banking, Metals, Technology and Reality sectors were down. Sensex was down by 43 points to settle at 28420 & Nifty went down by 6 points to settle at 8603 level. European markets traded upside.

Stock Recommendation



Capital Height's

Stock recommendation for 21/7/2015 is BHEL Ltd. In today's trading session it was up by 1.56%. Its long term trend is up. On daily chart MACD & RSI has given buying confirmation. On daily chart its short term support level is 1468. All

the indicators are suggesting that one can go for long position in this stock above 1502 levels. The stock may test level of 1550-1570 in coming days.

Our recommendation on BHEL Ltd. is **long** above 1502 levels for tgt of 1550-1570.

MARKET PERFORMANCE

Sectorial Indices

INDEX	P. CLOSE	OPEN	HIGH	LOW	LAST	% CHANGE
CNX Nifty	8609.85	8623.9	8624.1	8559	8603.45	-0.07
CNX Nifty Junior	20880.25	20911.15	20931.6	20823	20889.00	0.04
India VIX	14.8025	14.8025	15.6175	12.7325	14.96	1.06
CNX 100	8716	8730	8730	8673.85	8711.10	-0.06
CNX 500	7148.05	7161.5	7161.5	7121.15	7148.50	0.01
CNX Midcap	13725.85	13769.95	13781.45	13711.9	13759.80	0.25
Nifty Midcap 50	3437	3445.1	3453.6	3428.9	3448.90	0.35
Bank Nifty	19094.7	19126.1	19149.05	18852.7	19032.70	-0.32
CNX Energy	8950.9	8981.85	8981.85	8920.9	8960.75	0.11
CNX FMCG	20575.85	20584.65	20635.45	20476.45	20511.40	-0.31
CNX IT	11269.2	11270.4	11307.9	11197.85	11266.95	-0.02
CNX Media	2336.95	2343.2	2372.95	2323.5	2366.50	1.26
CNX Metal	2207.65	2214.3	2215.05	2191.5	2194.55	-0.59
CNX MNC	10287.35	10309.65	10321.95	10241	10260.70	-0.26
CNX Pharma	13139	13184.75	13201.25	13130.2	13175.65	0.28
CNX PSE	3607.15	3617.2	3617.7	3588.6	3600.75	-0.18
CNX PSU Bank	3380.95	3388.6	3388.6	3304.8	3320.40	-1.79
CNX Realty	180.1	181.50	181.55	175.85	176.45	-2.03

Index PE

Index PE	20 July 2015
Nifty	23.88
Sensex	22.94

Nifty Stats

Market Breadth	NSE	BSE
Advance	19	1517
Decline	30	1297
Same	01	114

Macro Economic Data

Economic Data	Current	Previous
Monthly Inflation (m-o-m)	5.20%	4.38%
IIP Growth (m-o-m)	5.00%	2.60%
Repo Rate	7.25%	7.50%
Reserve Repo Rate	7.00%	7.00%
CRR	4.00%	4.00%
GDP Growth (Q-o-Q)	7.50%	5.30%

Index Movers (Pulling Up/Down)

Company Name	Contribution/Up	Company Name	Contribution/Down
UltraTechCement	6.41	ICICI Bank	-4.29
Asian Paints	5.78	ITC	-4.53
Idea Cellular	4.35	SBI	-5.57
HDFC Bank	4.23	Tata Motors	-7.78
TCS	3.88	HDFC	-7.98

Nifty Gainers/ Losers

Symbol	Close Price	% Change	Symbol	Close Price	% Change
ULTRACEMCO	3357.65	4.16	PNB	140.75	-2.80
ASIANPAINT	851.15	3.12	BANKBARODA	152.75	-2.24
BPCL	965.00	2.70	CAIRN	167.20	-2.08
GRASIM	3770.25	1.98	ACC	1456.10	-2.01
IDEA	184.70	1.82	TATAMOTORS	390.55	-1.88

52 Week High/ Low

Symbol	Close Price	% Change	Symbol	Close Price	% Change
AARTIIND	383.40	1.85	ADANIEN	87.80	-0.9
ABBOTINDIA	4315.00	5	AFTEK	3.15	-4.55
ABIRLANUVO	2008.20	3.06	AXISGOLD	2394.00	-2.26
AEGISCHEM	867.50	3.58	BIRLACOT	0.10	100
AJANTPHARM	1668.00	-0.3	BSELINFRA	1.75	0

Most Active Securities

Symbol	Close Price	% Change
ULTRACEMCO	3357.65	4.16
HDFC	1316.85	-0.74
AXISBANK	599.85	-0.37
ICICIBANK	315.60	-0.58
TATAMOTORS	390.55	-1.88

Asian Markets

Name	Open	High	Low	Current Value	Change	% Chg
Nikkei 225	20646.63	20658.95	20611.22	20650.92	50.80	0.25
Hang Seng	25540.31	25540.31	25298.96	25404.81	-10.46	-0.04
Taiwan	9085.00	9124.88	8952.64	8975.00	-70.98	-0.79
KOSPI	2077.09	2081.43	2068.19	2073.31	-3.48	-0.17
Jakarta	1480.12	1481.27	1466.64	1466.71	-12.60	-0.86

DERIVATIVE CORNER

Most Active Call Options

Symbol	Expiry Date	Option type	Strike price	LTP	Traded volume (Contracts)	Traded value (Lakhs)	Open Interest
NIFTY	30-July-15	CE	8600	65.85	3,34,180	7,24,819.71	25,83,250
NIFTY	30-July-15	CE	8500	103.70	3,15,472	6,79,600.82	25,95,950
NIFTY	30-July-15	CE	8700	39.30	2,07,886	4,54,554.17	25,80,875
NIFTY	30-July-15	CE	8800	22.35	1,96,920	4,34,521.21	37,14,275
NIFTY	30-July-15	CE	9000	7.30	1,61,868	3,64,532.81	36,65,225

Most Active Put Options

Symbol	Expiry Date	Option type	Strike price	LTP	Traded volume (Contracts)	Traded value (Lakhs)	Open Interest
NIFTY	30-July-15	PE	8300	92.25	2,93,411	6,15,171.37	31,53,575
NIFTY	30-July-15	PE	8400	129.3	2,69,594	5,74,266.22	19,74,075
NIFTY	30-July-15	PE	8200	64.45	1,95,360	4,03,456.98	35,43,450
NIFTY	30-July-15	PE	8100	44.55	1,52,844	3,11,123.13	35,78,375
NIFTY	30-July-15	PE	8000	30	1,49,901	3,00,881.29	42,71,100

Securities in Ban (21-07-2015)

Securities In Ban		
INDIACEMENT	AMTECHAUTO	-
-	-	-

F&O Trade Statistics

Product	No Of Contracts	Turnover In Rs. (Cr)	Put Call Ratio
Index Futures	4,45,046	12892.08	-
Stock Futures	7,92,630	22635.85	-
Index Options	65,96,846	1,51,860.44	1.21
Stock Options	4,57,737	13090.42	0.51
F&O Total	82,92,259	2,00,478.78	1.14

FII Trading Activity (NSE & BSE) In Crores

CATEGORY	DATE	BUY VALUE	SELL VALUE	NET VALUE
FII	20-July-2015	3273	2558	714

DII Trading Activity (NSE & BSE) In Crores

CATEGORY	DATE	BUY VALUE	SELL VALUE	NET VALUE
DII	20-July-2015	867	1716	-848

Corporate Actions (21july2015)

EX-Dividend- Bharat Forge, Bata India, Smartlink Net, Gabriel India

Board Meeting (Purpose)

Bhilwara Tech, Can Fin Homes, Cairn India, Century Plyboard, Edelweiss

(Quarterly results)

TECHNICAL VIEW

NIFTY

DAILY PIVOT

SCRIPT	R4	R3	R2	R1	P	S1	S2	S3	S4
NIFTY	8840	8740	8662	8635	8589	8561	8515	8470	8390

OUTLOOK

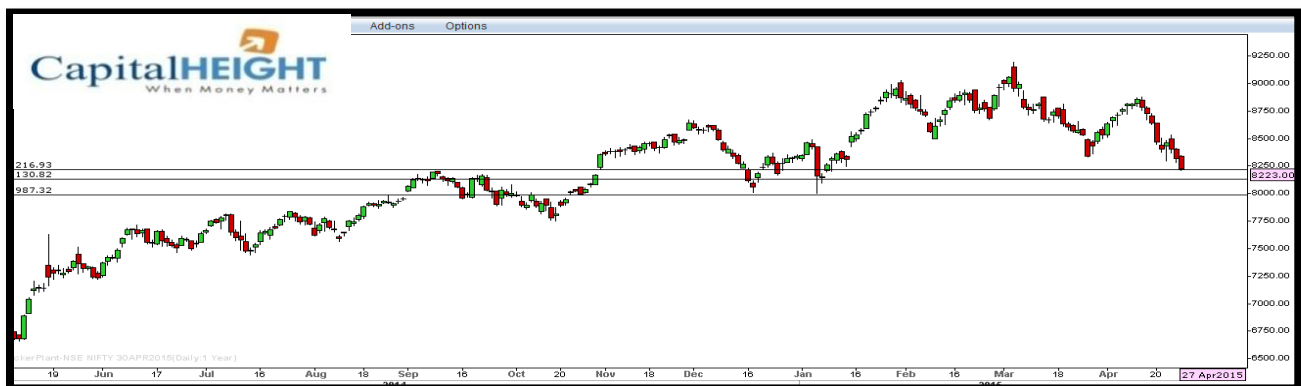
Trend: - Consolidate

Resistance: -8630, 8740

Support: - 8560, 8510

Strategy: - Buy on dips

NIFTY DAILY



BANK NIFTY

DAILY PIVOT

SCRIPT	R4	R3	R2	R1	P	S1	S2	S3	S4
BANK NIFTY	19800	19560	19485	19358	19122	18994	18758	18650	18435

OUTLOOK

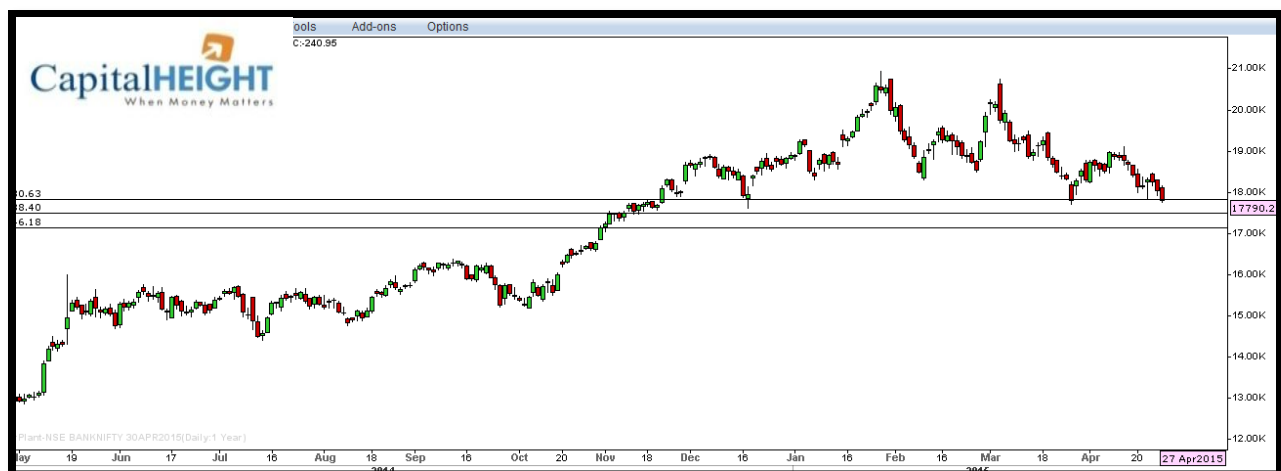
Trend: - Consolidate

Resistance: - 19350, 19480

Support: - 18990, 18750

Strategy: - Buy on dips

BANK NIFTY DAILY



Disclaimer

The information and views in this report, our website & all the service we provide are believed to be reliable, but we do not accept any responsibility (or liability) for errors of fact or opinion. Users have the right to choose the product/s that suits them the most.

Sincere efforts have been made to present the right investment perspective. The information contained herein is based on analysis and up on sources that we consider reliable.

This material is for personal information and based upon it & takes no responsibility

The information given herein should be treated as only factor, while making investment decision. The report does not provide individually tailor-made investment advice. Money CapitalHeight Research investment advisors Pvt. Ltd. recommends that investors independently evaluate particular investments and strategies, and encourages investors to seek the advice of a financial adviser. Money CapitalHeight Research investment advisors Pvt. Ltd. shall not be responsible for any transaction conducted based on the information given in this report, which is in violation of rules and regulations of NSE and BSE.

The share price projections shown are not necessarily indicative of future price performance. The information herein, together with all estimates and forecasts, can change without notice. Analyst or any person related to Money CapitalHeight Research investment advisors Pvt. Ltd. might be holding positions in the stocks recommended. It is understood that anyone who is browsing through the site has done so at his free will and does not read any views expressed as a recommendation for which either the site or its owners or anyone can be held responsible for. Any surfing and reading of the information is the acceptance of this disclaimer.

All Rights Reserved.

Investment in Commodity and equity market has its own risks.

We, however, do not vouch for the accuracy or the completeness thereof. **we are not responsible for any loss incurred whatsoever for any financial profits or loss which may arise from the recommendations above.** Money CapitalHeight Research investment advisors Pvt. Ltd. does not purport to be an invitation or an offer to buy or sell any financial instrument. **Our Clients (Paid Or Unpaid), Any third party or anyone else have no rights to forward or share our calls or SMS or Report or Any Information Provided by us to/with anyone which is received directly or indirectly by them. If found so then Serious Legal Actions can be taken.**