

# Daily Newsletter-Equity

24/07/2015



  
**CapitalHEIGHT**  
When Money Matters

[www.capitalheight.com](http://www.capitalheight.com)

# MARKET WRAP

- ▶ Indian markets ended weak. Nifty and Sensex down by 0.52% and 0.47%.
- ▶ Asia-Pacific ended up. Hang Seng up by 0.46% and Kospi up by 0.02%.
- ▶ Wall Street flat. USD Existing home sales up by 0.9M. Dow futures up 7.50 pts.

Indian indices closed on weak note supported by Bank Nifty amid highly volatile session. On sectorial front Media, Metal and Banking sectors were highly down while Reality sector was stable. Sensex was down by 134 points at 28370 & Nifty went down by 43 points to settle at 8589 level. European markets trade upside.

## Stock Recommendation



### Capital Height's

Stock recommendation for 24/7/2015 is Divislab Ltd. In today's trading session it was up by 1.70%. Its long term trend is up. On daily chart MACD & RSI has given buying confirmation. On daily chart its short term support level is 1938. All the

indicators are suggesting that one can go for long position in this stock above 1980 levels. The stock may test level of 2020-2050 in coming days.

Our recommendation on Divislab Ltd. is **long** above 1980 levels for target of 2020-2050.

# MARKET PERFORMANCE

## Sectorial Indices

INDEX	P. CLOSE	OPEN	HIGH	LOW	LAST	% CHANGE
CNX Nifty	8633.50	8643.95	8654.75	8573.80	8589.80	-0.51
CNX Nifty Junior	20774.60	20860.65	20908.35	20747.85	20789.70	0.07
India VIX	15.13	15.13	15.74	13.10	15.52	2.58
CNX 100	8729.25	8743.85	8753.30	8677.55	8692.95	-0.42
CNX 500	7149.45	7164.40	7172.70	7120.00	7129.35	-0.28
CNX Midcap	13663.80	13714.25	13756.60	13673.60	13687.00	0.17
Nifty Midcap 50	3439.60	3450.35	3483.20	3445.55	3458.05	0.54
Bank Nifty	18997.00	18990.85	19091.45	18819.25	18865.00	-0.69
CNX Energy	9055.40	9081.60	9149.35	9014.30	9045.00	-0.11
CNX FMCG	20310.20	20340.10	20343.35	20178.05	20272.80	-0.18
CNX IT	11643.75	11640.65	11719.05	11537.70	11558.70	-0.73
CNX Media	2428.95	2438.55	2438.55	2378.20	2386.25	-1.76
CNX Metal	2189.85	2182.65	2195.80	2173.80	2180.10	-0.45
CNX MNC	10239.20	10240.65	10249.00	10194.95	10205.25	-0.33
CNX Pharma	12377.70	12435.45	12435.60	12233.55	12275.40	-0.83
CNX PSE	3606.20	3614.30	3616.50	3588.95	3599.20	-0.19
CNX PSU Bank	3320.15	3323.05	3355.25	3305.15	3332.75	0.38
CNX Realty	174.05	174.95	175.95	173.55	174.20	0.09

## Index PE

Index PE	23July2015
Nifty	23.84
Sensex	22.73

## Nifty Stats

Market Breadth	NSE	BSE
Advance	15	1510
Decline	35	1326
Same	00	132

## Macro Economic Data

Economic Data	Current	Previous
Monthly Inflation (m-o-m)	5.20%	4.38%
IIP Growth (m-o-m)	5.00%	2.60%
Repo Rate	7.25%	7.50%
Reserve Repo Rate	7.00%	7.00%
CRR	4.00%	4.00%
GDP Growth (Q-o-Q)	7.50%	5.30%

## Index Movers (Pulling Up/Down)

Company Name	Contribution/Up	Company Name	Contribution/Down
Tata Motors	7.46	Bajaj Auto	-5.00
Dr Reddys Labs	2.23	Larsen	-5.21
M&M	2.06	ICICI Bank	-6.02
HDFC	2.01	TCS	-6.17
Cairn India	1.88	Lupin	-6.30

## Nifty Gainers/ Losers

Symbol	Close Price	% Change	Symbol	Close Price	% Change
CAIRN	177.25	6.17	BAJAJ-AUTO	2482.00	-5.23
TATAMOTORS	402.50	3.32	LUPIN	1729.00	-5.21
DRREDDY	3925.00	2.01	ZEEL	395.35	-2.92
M&M	1360.00	1.32	HINDUNILVR	904.90	-1.69
MARUTI	4233.20	1.00	HCLTECH	966.50	-1.68

## 52 Week High/ Low

Symbol	Close Price	% Change	Symbol	Close Price	% Change
AARTIIND	402.95	3.56	ADANIEN	84.75	-0.12
ABBOTINDIA	4362.00	0.36	ANDHRACEMT	5.95	-4.03
ABIRLANUVO	2089.70	2.77	AXISGOLD	2395.00	0.54
ADSL	38.45	3.08	BIRLACOT	0.10	0
ASAHIINDIA	166.80	-0.33	CLASSIC	1.00	-4.76

## Most Active Securities

Symbol	Close Price	% Change
LUPIN	1729.00	-5.21
RELIANCE	1044.95	-0.52
ICICIBANK	312.60	-1.33
INFY	1094.45	-0.79
BAJAJ-AUTO	2482.00	-5.23

## Asian Markets

Name	Open	High	Low	Current Value	Change	% Chg
Nikkei 225	20693.57	20708.23	20648.76	20683.95	90.28	0.44
Hang Seng	25308.55	25500.99	25250.36	25398.85	116.23	0.46
Taiwan Weighted	8865.36	8895.88	8751.71	8791.12	-127.58	-1.45
KOSPI	2068.93	2069.20	2053.52	2065.07	0.34	0.02
Jakarta	4897.21	4913.04	4889.83	4902.85	-3.84	-0.08

# DERIVATIVE CORNER

## Most Active Call Options

Symbol	Expiry Date	Option type	Strike price	LTP	Traded volume (Contracts)	Traded value (Lakhs)	Open Interest
NIFTY	30-Jul-15	CE	8700	24.9	11,94,050	26,06,178.31	51,13,775
NIFTY	30-Jul-15	CE	8600	64	10,20,753	22,13,382.94	41,69,900
NIFTY	30-Jul-15	CE	8800	6.9	7,53,473	16,59,431.98	44,45,800
NIFTY	30-Jul-15	CE	8900	1.65	3,46,050	7,70,142.06	32,21,600
NIFTY	30-Jul-15	CE	8500	127.25	1,92,272	4,15,369.05	22,76,450

## Most Active Put Options

Symbol	Expiry Date	Option type	Strike price	LTP	Traded volume (Contracts)	Traded value (Lakhs)	Open Interest
NIFTY	30-Jul-15	PE	8600	61	11,81,419	25,56,274.69	32,91,750
NIFTY	30-Jul-15	PE	8500	26.6	9,22,625	19,66,399.89	61,92,925
NIFTY	30-Jul-15	PE	8400	10.45	5,93,711	12,48,382.76	46,30,175
NIFTY	30-Jul-15	PE	8300	4.5	3,66,749	7,61,455.28	48,67,625
NIFTY	30-Jul-15	PE	8700	120	3,32,390	7,31,815.58	10,47,250

## Securities in Ban (24-07-2015)

Securities In Ban		
INDIACEM	AMTEKAUTO	CEATLTD
CENTURYTEXT	-	-

## F&O Trade Statistics

Product	No Of Contracts	Turnover In Rs. ( Cr)	Put Call Ratio
Index Futures	6,06,482	16597.31	-
Stock Futures	11,80,899	33321.18	-
Index Options	93,92,814	2,17,628.84	1
Stock Options	6,65,141	19008.96	0.51
<b>F&amp;O Total</b>	<b>1,18,45,336</b>	<b>2,86,556.29</b>	<b>0.96</b>

## FII Trading Activity (NSE & BSE) In Crores

CATEGORY	DATE	BUY VALUE	SELL VALUE	NET VALUE
FII	23-Jul-2015	3851.6	3666.18	<b>185.42</b>

## DII Trading Activity (NSE & BSE) In Crores

CATEGORY	DATE	BUY VALUE	SELL VALUE	NET VALUE
DII	23-Jul-2015	1507.41	1784.1	<b>-276.69</b>

## Corporate Actions (24 Jul 2015)

**EX-Dividend-** Geojit BNP, ayshree Tea, Modern Home, Mcleod

**Board Meeting (Purpose)**

Bharat Elec, Crompton Greave, Excel, Parrys Sugar (Quarterly results)

# TECHNICAL VIEW

## NIFTY

### DAILY PIVOT

SCRIPT	R4	R3	R2	R1	P	S1	S2	S3	S4
NIFTY	8892	8805	8718	8683	8631	8596	8544	8457	8370

### OUTLOOK

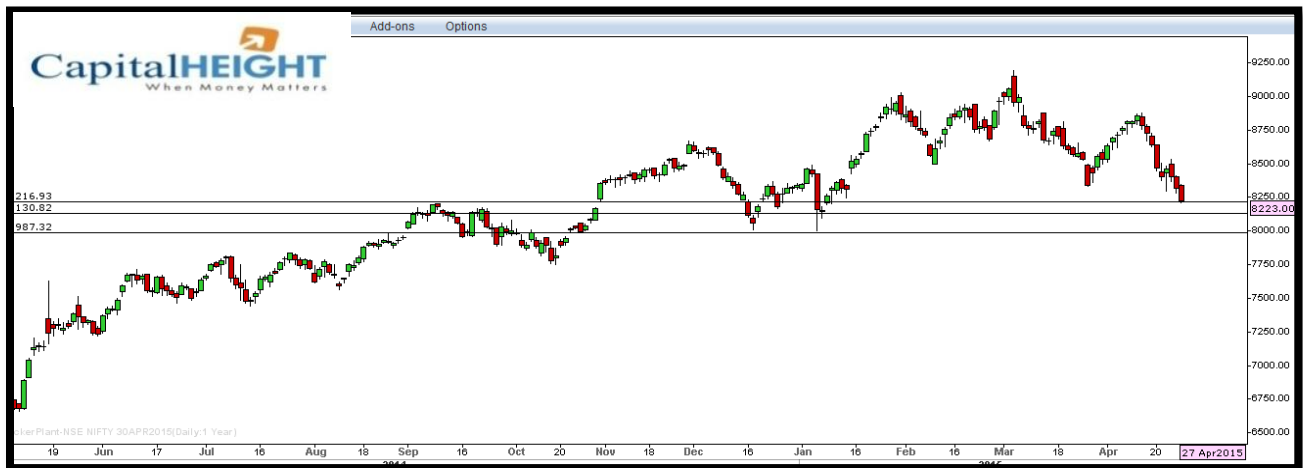
**Trend: - Consolidate**

**Resistance: - 8680, 8800**

**Support: - 8590, 8540**

**Strategy: - Buy on dips**

## NIFTY DAILY





## BANK NIFTY

### DAILY PIVOT

SCRIPT	R4	R3	R2	R1	P	S1	S2	S3	S4
BANK NIFTY	19893	19601	19309	19182	19017	18890	18725	18433	18141

### OUTLOOK

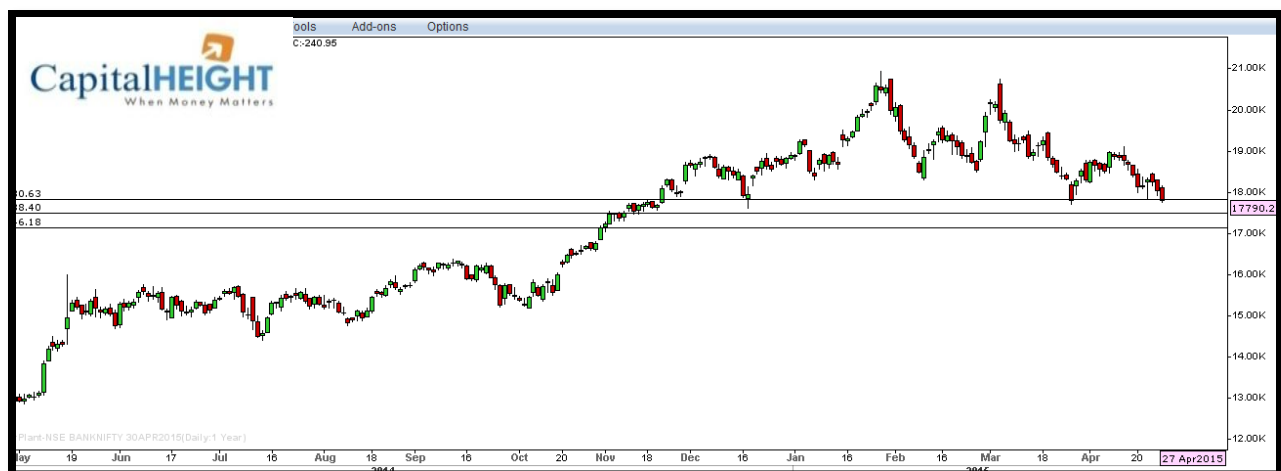
**Trend: - Consolidate**

**Resistance: - 19180, 19300**

**Support: - 18890, 18720**

**Strategy: - Buy on dips**

### BANK NIFTY DAILY



# Disclaimer

The information and views in this report, our website & all the service we provide are believed to be reliable, but we do not accept any responsibility (or liability) for errors of fact or opinion. Users have the right to choose the product/s that suits them the most.

Sincere efforts have been made to present the right investment perspective. The information contained herein is based on analysis and up on sources that we consider reliable.

**This material is for personal information and based upon it & takes no responsibility**

The information given herein should be treated as only factor, while making investment decision. The report does not provide individually tailor-made investment advice. Money CapitalHeight Research investment advisors Pvt. Ltd. recommends that investors independently evaluate particular investments and strategies, and encourages investors to seek the advice of a financial adviser. Money CapitalHeight Research investment advisors Pvt. Ltd. shall not be responsible for any transaction conducted based on the information given in this report, which is in violation of rules and regulations of NSE and BSE.

The share price projections shown are not necessarily indicative of future price performance. The information herein, together with all estimates and forecasts, can change without notice. Analyst or any person related to Money CapitalHeight Research investment advisors Pvt. Ltd. might be holding positions in the stocks recommended. It is understood that anyone who is browsing through the site has done so at his free will and does not read any views expressed as a recommendation for which either the site or its owners or anyone can be held responsible for. Any surfing and reading of the information is the acceptance of this disclaimer.

All Rights Reserved.

**Investment in Commodity and equity market has its own risks.**

We, however, do not vouch for the accuracy or the completeness thereof. **we are not responsible for any loss incurred whatsoever for any financial profits or loss which may arise from the recommendations above.** Money CapitalHeight Research investment advisors Pvt. Ltd. does not purport to be an invitation or an offer to buy or sell any financial instrument. **Our Clients (Paid Or Unpaid), Any third party or anyone else have no rights to forward or share our calls or SMS or Report or Any Information Provided by us to/with anyone which is received directly or indirectly by them. If found so then Serious Legal Actions can be taken.**