

Daily Newsletter-Equity

27/07/2015




CapitalHEIGHT
When Money Matters

www.capitalheight.com

MARKET WRAP

- ▶ Indian markets ended weak. Nifty and Sensex down by 0.79% and 0.91%.
- ▶ Asia-Pacific ended down. Hang Seng down by 1.08% and Kospi down by 0.93%.
- ▶ Wall Street flat. USD Existing home sales up by 0.9M. Dow futures up 107 pts.

Indian indices again continued downwards movement and closed on weak note. On sectorial front Media, Metal, Energy and Banking sectors were highly down while Realty sector was stable. Sensex was down by 258 points at 28112 & Nifty went down by 68 points to settle at 8521 level. European markets trade downside.

Stock Recommendation



Capital Height's

Stock recommendation for 27/7/2015 is RS software Ltd. In today's trading session it was up by 7.88%. Its long term trend is up. On daily chart MACD & RSI has given buying confirmation. On daily chart its short term support level is 188.50. All the

indicators are suggesting that one can go for long position in this stock above 195 levels. The stock may test level of 220-230 in coming days.

Our recommendation on Rs software Ltd. is **long** above 195 levels for target of 215.

MARKET PERFORMANCE

Sectorial Indices

INDEX	P. CLOSE	OPEN	HIGH	LOW	LAST	% CHANGE
CNX Nifty	8589.80	8588.15	8589.15	8513.50	8521.55	-0.79
CNX Nifty Junior	20789.70	20823.25	20864.70	20615.15	20636.70	-0.74
India VIX	15.52	15.52	15.93	12.07	15.46	-0.40
CNX 100	8692.95	8693.70	8693.70	8616.95	8624.65	-0.79
CNX 500	7129.35	7131.00	7131.90	7068.60	7074.95	-0.76
CNX Midcap	13687.00	13710.55	13742.75	13568.30	13584.55	-0.75
Nifty Midcap 50	3458.05	3460.85	3476.30	3412.10	3419.45	-1.12
Bank Nifty	18865.00	18832.45	18860.75	18613.55	18635.85	-1.21
CNX Energy	9045.00	9048.30	9054.30	8922.40	8936.75	-1.20
CNX FMCG	20272.80	20296.70	20338.00	20187.40	20303.75	0.15
CNX IT	11558.70	11568.85	11588.90	11452.25	11464.15	-0.82
CNX Media	2386.25	2406.70	2412.70	2352.75	2362.55	-0.99
CNX Metal	2180.10	2174.35	2190.55	2148.55	2151.65	-1.30
CNX MNC	10205.25	10216.45	10258.65	10171.20	10194.65	-0.10
CNX Pharma	12275.40	12298.40	12360.90	12180.80	12226.05	-0.40
CNX PSE	3599.20	3594.40	3605.75	3569.80	3573.10	-0.73
CNX PSU Bank	3332.75	3321.90	3338.60	3264.55	3274.25	-1.76
CNX Realty	174.20	174.55	174.55	171.05	171.55	-1.52

Index PE

Index PE	24July2015
Nifty	23.65
Sensex	22.45

Nifty Stats

Market Breadth	NSE	BSE
Advance	16	1264
Decline	34	1584
Same	00	109

Macro Economic Data

Economic Data	Current	Previous
Monthly Inflation (m-o-m)	5.20%	4.38%
IIP Growth (m-o-m)	5.00%	2.60%
Repo Rate	7.25%	7.50%
Reserve Repo Rate	7.00%	7.00%
CRR	4.00%	4.00%
GDP Growth (Q-o-Q)	7.50%	5.30%

Index Movers (Pulling Up/Down)

Company Name	Contribution/Up	Company Name	Contribution/Down
HDFC	3.37	SBI	-6.04
TCS	2.54	Larsen	-6.27
Sun Pharma	1.85	Tata Motors	-6.88
Tech Mahindra	1.79	Reliance	-9.41
Kotak Mahindra	1.04	ICICI Bank	-18.63

Nifty Gainers/ Losers

Symbol	Close Price	% Change	Symbol	Close Price	% Change
CAIRN	177.25	6.17	ICICIBANK	301.40	-3.68
TATAMOTORS	402.50	3.32	WIPRO	567.60	-3.64
DRREDDY	3925.00	2.01	TATAMOTORS	389.65	-2.92
M&M	1360.00	1.32	LUPIN	1680.00	-2.79
MARUTI	4233.20	1.00	VEDL	132.10	-2.51

52 Week High/ Low

Symbol	Close Price	% Change	Symbol	Close Price	% Change
ABIRLANUVO	2113.90	1.25	ANDHRACEMT	5.95	-0.83
APCOTEXIND	569.00	9.1	AXISGOLD	2390.00	1.43
BAJAJFINSV	1722.00	-0.44	BIRLACOT	0.10	100
BANSWRAS	96.15	19.96	DBSTOCKBRO	26.35	-0.57
BLISSGVS	192.30	0.52	FARMAXIND	0.20	-20

Most Active Securities

Symbol	Close Price	% Change
AXISBANK	581.20	-0.44
PVR	804.10	-5.77
TATAELXSI	1598.00	12.90
LUPIN	1680.00	-2.79
ICICIBANK	301.40	-3.68

Asian Markets

Name	Open	High	Low	Current Value	Change	% Chg
Nikkei 225	20603.63	20631.54	20527.78	20544.53	-139.42	-0.68
Hang Seng	25279.95	25279.95	25073.20	25128.51	-270.34	-1.08
Taiwan Weighted	8809.65	8811.76	8733.43	8767.86	-23.26	-0.27
KOSPI	2060.66	2060.66	2040.30	2045.96	-19.11	-0.93
Jakarta	4890.78	4892.41	4848.73	4856.6	-46.25	-0.95

DERIVATIVE CORNER

Most Active Call Options

Symbol	Expiry Date	Option type	Strike price	LTP	Traded volume (Contracts)	Traded value (Lakhs)	Open Interest
NIFTY	30-Jul-15	CE	8700	24.9	11,94,050	26,06,178.31	51,13,775
NIFTY	30-Jul-15	CE	8600	64	10,20,753	22,13,382.94	41,69,900
NIFTY	30-Jul-15	CE	8800	6.9	7,53,473	16,59,431.98	44,45,800
NIFTY	30-Jul-15	CE	8900	1.65	3,46,050	7,70,142.06	32,21,600
NIFTY	30-Jul-15	CE	8500	127.25	1,92,272	4,15,369.05	22,76,450

Most Active Put Options

Symbol	Expiry Date	Option type	Strike price	LTP	Traded volume (Contracts)	Traded value (Lakhs)	Open Interest
NIFTY	30-Jul-15	PE	8600	61	11,81,419	25,56,274.69	32,91,750
NIFTY	30-Jul-15	PE	8500	26.6	9,22,625	19,66,399.89	61,92,925
NIFTY	30-Jul-15	PE	8400	10.45	5,93,711	12,48,382.76	46,30,175
NIFTY	30-Jul-15	PE	8300	4.5	3,66,749	7,61,455.28	48,67,625
NIFTY	30-Jul-15	PE	8700	120	3,32,390	7,31,815.58	10,47,250

Securities in Ban (27-07-2015)

Securities In Ban		
INDIACEM	AMTEKAUTO	CEATLTD
CENTURYTEXT	-	-

F&O Trade Statistics

Product	No Of Contracts	Turnover In Rs. (Cr)	Put Call Ratio
Index Futures	6,06,482	16597.31	-
Stock Futures	11,80,899	33321.18	-
Index Options	93,92,814	2,17,628.84	1
Stock Options	6,65,141	19008.96	0.51
F&O Total	1,18,45,336	2,86,556.29	0.96

FII Trading Activity (NSE & BSE) In Crores

CATEGORY	DATE	BUY VALUE	SELL VALUE	NET VALUE
FII	24-Jul-2015	3424.92	3418.30	6.62

DII Trading Activity (NSE & BSE) In Crores

CATEGORY	DATE	BUY VALUE	SELL VALUE	NET VALUE
DII	24-Jul-2015	1507.40	1784.1	-276.69

Corporate Actions (27 Jul 2015)

EX-Dividend- Nilkamal, GlaxoSmith Con, Snowman Logist

Board Meeting (Purpose)

Adi Finechem, Ion Exchange, Info Edge, Just Dial(Quarterly results)

TECHNICAL VIEW

NIFTY

DAILY PIVOT

SCRIPT	R4	R3	R2	R1	P	S1	S2	S3	S4
NIFTY	8892	8805	8718	8683	8631	8596	8544	8457	8370

OUTLOOK

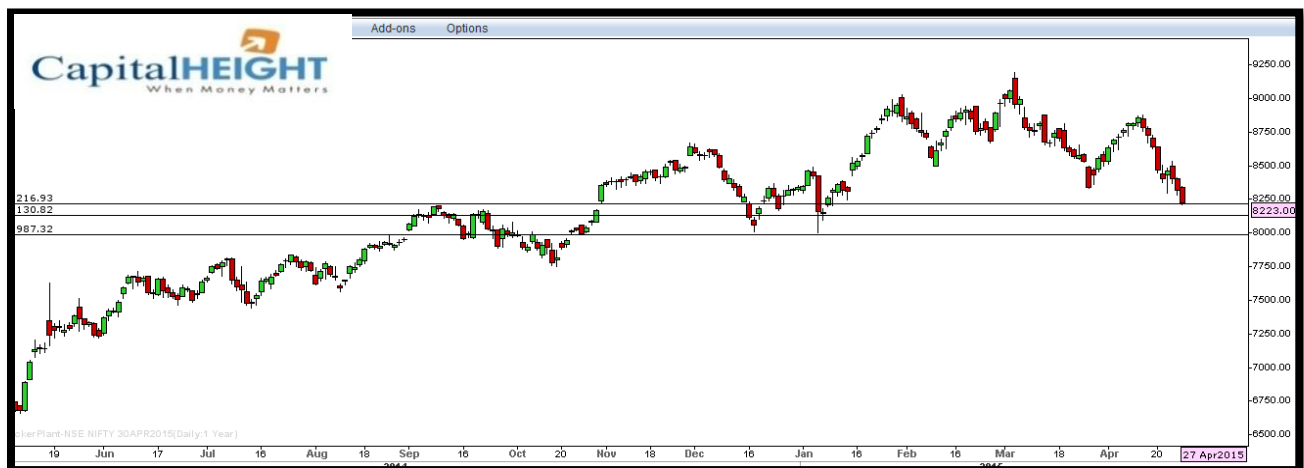
Trend: - Consolidate

Resistance: - 8680, 8800

Support: - 8590, 8540

Strategy: - Buy on dips

NIFTY DAILY



BANK NIFTY

DAILY PIVOT

SCRIPT	R4	R3	R2	R1	P	S1	S2	S3	S4
BANK NIFTY	19893	19601	19309	19182	19017	18890	18725	18433	18141

OUTLOOK

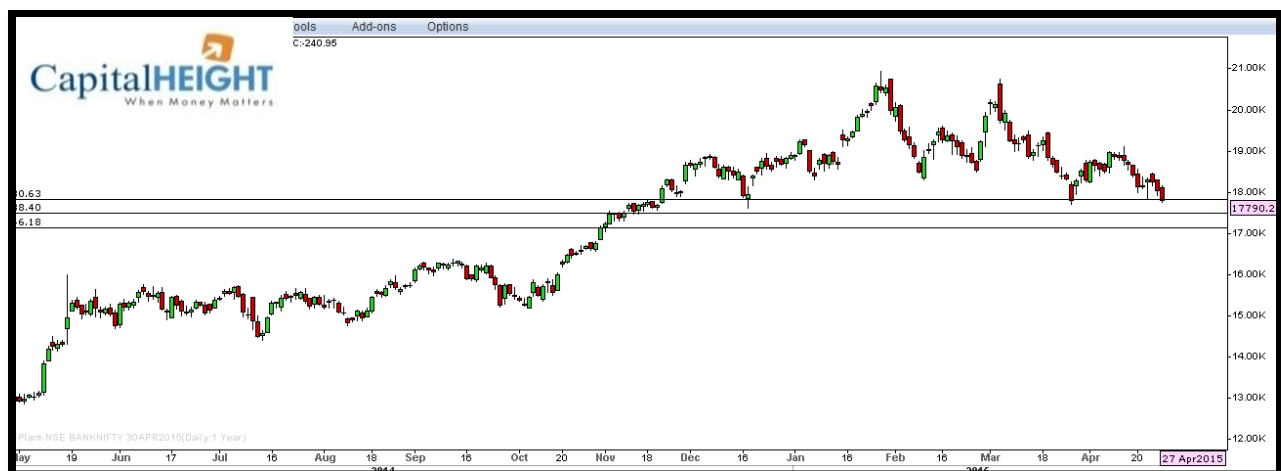
Trend: - Consolidate

Resistance: - 19180, 19300

Support: - 18890, 18720

Strategy: - Buy on dips

BANK NIFTY DAILY



Disclaimer

The information and views in this report, our website & all the service we provide are believed to be reliable, but we do not accept any responsibility (or liability) for errors of fact or opinion. Users have the right to choose the product/s that suits them the most.

Sincere efforts have been made to present the right investment perspective. The information contained herein is based on analysis and up on sources that we consider reliable.

This material is for personal information and based upon it & takes no responsibility

The information given herein should be treated as only factor, while making investment decision. The report does not provide individually tailor-made investment advice. Money CapitalHeight Research investment advisors Pvt. Ltd. recommends that investors independently evaluate particular investments and strategies, and encourages investors to seek the advice of a financial adviser. Money CapitalHeight Research investment advisors Pvt. Ltd. shall not be responsible for any transaction conducted based on the information given in this report, which is in violation of rules and regulations of NSE and BSE.

The share price projections shown are not necessarily indicative of future price performance. The information herein, together with all estimates and forecasts, can change without notice. Analyst or any person related to Money CapitalHeight Research investment advisors Pvt. Ltd. might be holding positions in the stocks recommended. It is understood that anyone who is browsing through the site has done so at his free will and does not read any views expressed as a recommendation for which either the site or its owners or anyone can be held responsible for. Any surfing and reading of the information is the acceptance of this disclaimer.

All Rights Reserved.

Investment in Commodity and equity market has its own risks.

We, however, do not vouch for the accuracy or the completeness thereof. **we are not responsible for any loss incurred whatsoever for any financial profits or loss which may arise from the recommendations above.** Money CapitalHeight Research investment advisors Pvt. Ltd. does not purport to be an invitation or an offer to buy or sell any financial instrument. **Our Clients (Paid Or Unpaid), Any third party or anyone else have no rights to forward or share our calls or SMS or Report or Any Information Provided by us to/with anyone which is received directly or indirectly by them. If found so then Serious Legal Actions can be taken.**