

Daily Newsletter-Equity

30/07/2015




CapitalHEIGHT
When Money Matters

www.capitalheight.com

MARKET WRAP

- ▶ Indian markets ended positive note. Nifty and Sensex up by 0.46% and 0.38%.
- ▶ Asia-Pacific traded mixed. Hang Seng up by 0.47% and Kospi down by 0.07%.
- ▶ Wall St. flat. USD Core Durable Goods Orders up by 0.85. Dow fut. up 67.50 pts.

Indian broad indices showed upside movement and closed with positive note. On sectorial front Realty, IT, Media, Metal, and Auto were highly up while Energy Sector down by 1.02%. Sensex was up by 104 points at 27563 & Nifty went up by 18 points to settle at 8382 level. European markets trade upside.

Stock Recommendation



Capital Height's

Stock recommendation for 30/7/2015 is Emami Ltd. In today's trading session it was up by 4.42%. Its long term trend is up. On daily chart MACD & RSI has given buying confirmation. On daily chart its short term support level is 1210. All the

indicators are suggesting that one can go for long position in this stock above 1270 levels. The stock may test level of 1295-1300 in coming days.

Our recommendation on Emami Ltd is **long** above 1270 levels for target of 1295-1300.

MARKET PERFORMANCE

Sectorial Indices

INDEX	P. CLOSE	OPEN	HIGH	LOW	LAST	% CHANGE
CNX Nifty	8337.00	8365.60	8381.50	8338.45	8375.05	0.46
CNX Nifty Junior	20325.90	20388.30	20485.00	20354.85	20429.55	0.51
India VIX	15.92	15.92	16.34	14.13	15.88	-0.23
CNX 100	8446.75	8475.25	8490.75	8452.70	8490.40	0.52
CNX 500	6935.65	6960.15	6977.55	6944.45	6976.70	0.59
CNX Midcap	13349.65	13402.05	13473.95	13374.35	13460.00	0.83
Nifty Midcap 50	3346.35	3360.75	3374.95	3331.60	3372.70	0.79
Bank Nifty	18282.80	18331.55	18383.65	18264.30	18302.45	0.11
CNX Energy	8757.90	8758.60	8763.70	8654.65	8668.45	-1.02
CNX FMCG	20153.50	20187.05	20201.90	19933.95	19974.20	-0.89
CNX IT	11306.25	11369.45	11494.85	11330.65	11484.85	1.58
CNX Media	2364.70	2383.15	2436.30	2378.75	2427.20	2.64
CNX Metal	2093.15	2100.45	2111.95	2086.85	2096.60	0.16
CNX MNC	10080.70	10116.00	10232.05	10115.45	10211.15	1.29
CNX Pharma	11917.15	11945.05	11992.10	11872.60	11985.80	0.58
CNX PSE	3502.20	3506.20	3509.85	3485.95	3501.00	-0.03
CNX PSU Bank	3211.55	3221.60	3226.05	3136.70	3150.05	-1.91
CNX Realty	162.45	163.40	165.80	160.85	165.15	1.66

Index PE

Index PE	29July2015
Nifty	23.08
Sensex	22.03

Nifty Stats

Market Breadth	NSE	BSE
Advance	35	1665
Decline	15	1170
Same	00	113

Macro Economic Data

Economic Data	Current	Previous
Monthly Inflation (m-o-m)	5.20%	4.38%
IIP Growth (m-o-m)	5.00%	2.60%
Repo Rate	7.25%	7.50%
Reserve Repo Rate	7.00%	7.00%
CRR	4.00%	4.00%
GDP Growth (Q-o-Q)	7.50%	5.30%

Index Movers (Pulling Up/Down)

Company Name	Contribution/Up	Company Name	Contribution/Down
Infosys	10.14	Dr Reddys Labs	-1.08
Bosch	7.73	Tata Power	-1.16
Larsen	6.04	SBI	-4.39
ICICI Bank	5.68	Reliance	-5.84
HCL Tech	3.63	ITC	-9.31

Nifty Gainers/ Losers

Symbol	Close Price	% Change	Symbol	Close Price	% Change
PNB	142.50	5.44	BOSCHLTD	24187.90	5.15
BHEL	278.80	2.50	HCLTECH	951.10	3.01
NTPC	137.30	2.31	YESBANK	814.90	2.51
KOTAKBANK	731.40	2.29	TATAMOTORS	379.00	2.40
YESBANK	797.95	1.61	INFY	1086.00	2.18

52 Week High/ Low

Symbol	Close Price	% Change	Symbol	Close Price	% Change
AARVEEDEN	62.00	9.83	ADANIPOWER	26.70	-0.74
ABBOTINDIA	4550.00	4.4	ALBK	87.00	4.44
ABIRLANUVO	2200.00	0.76	AXISGOLD	2379.90	0.78
AEGISCHEM	900.00	5.25	BANKINDIA	149.50	-3.2
AIL	829.00	4.15	BIRLACOT	0.05	0

Most Active Securities

Symbol	Close Price	% Change
YESBANK	814.90	2.51
INFY	1086.00	2.18
TATAMOTORS	379.00	2.40
MARUTI	4274.00	1.84
ICICIBANK	288.90	1.37

Asian Markets

Name	Open	High	Low	Current Value	Change	% Chg
Nikkei 225	20425.69	20425.69	20205.21	20302.91	-25.98	-0.13
Hang Seng	24630.44	24718.64	24444.47	24619.45	115.51	0.47
Taiwan Weighted	8587.70	8619.41	8516.23	8563.48	-19.01	-0.22
KOSPI	2053.62	2055.95	2037.62	2037.62	-1.48	-0.07
Jakarta	4733.82	4765.74	4720.40	4721.12	6.36	0.13

DERIVATIVE CORNER

Most Active Call Options

Symbol	Expiry Date	Option type	Strike price	LTP	Traded volume (Contracts)	Traded value (Lakhs)	Open Interest
NIFTY	30-Jul-15	CE	8400	24.5	17,37,962	36,58,423.04	60,13,125
NIFTY	30-Jul-15	CE	8500	2.6	9,43,887	20,06,486.67	59,10,175
NIFTY	30-Jul-15	CE	8300	91.5	5,79,894	12,14,095.07	17,08,950
NIFTY	30-Jul-15	CE	8450	8.65	5,35,052	11,31,344.71	21,12,025
NIFTY	30-Jul-15	CE	8600	0.45	4,16,399	8,95,336.97	52,53,775

Most Active Put Options

Symbol	Expiry Date	Option type	Strike price	LTP	Traded volume (Contracts)	Traded value (Lakhs)	Open Interest
NIFTY	30-Jul-15	PE	8300	9	12,62,696	26,24,873.50	55,89,025
NIFTY	30-Jul-15	PE	8400	36.7	8,79,465	18,58,634.95	38,57,525
NIFTY	30-Jul-15	PE	8200	1.4	4,75,537	9,75,239.60	47,14,175
NIFTY	30-Jul-15	PE	8350	19.1	4,46,934	9,36,093.21	16,71,975
NIFTY	30-Jul-15	PE	8250	3	3,31,766	6,84,794.88	11,77,050

Securities in Ban (30-07-2015)

Securities In Ban		
INDIACEM	AMTEKAUTO	DISHTV
CENTURYTEXT	JINDALSTEEL	-

F&O Trade Statistics

Product	No Of Contracts	Turnover In Rs. (Cr)	Put Call Ratio
Index Futures	8,14,256	20024.38	-
Stock Futures	22,57,227	61594.24	-
Index Options	1,11,87,156	2,56,196.79	0.79
Stock Options	6,33,990	18269.39	0.57
F&O Total	1,48,92,629	3,56,084.81	0.78

FII Trading Activity (NSE & BSE) In Crores

CATEGORY	DATE	BUY VALUE	SELL VALUE	NET VALUE
FII	29-Jul-2015	4256.77	4520.01	-186.24

DII Trading Activity (NSE & BSE) In Crores

CATEGORY	DATE	BUY VALUE	SELL VALUE	NET VALUE
DII	29-Jul-2015	1934.80	1292.11	642.69

Corporate Actions (30 Jul 2015)

EX-Dividend- Cummins, Arvind, Trident, Bombay Dyeing

Board Meeting (Purpose)

Dena Bank, Colgate, Exide Ind, Excel (Quarterly results)

TECHNICAL VIEW

NIFTY

DAILY PIVOT

SCRIPT	R4	R3	R2	R1	P	S1	S2	S3	S4
NIFTY	8512	8460	8409	8380	8358	8329	8307	8256	8205

OUTLOOK

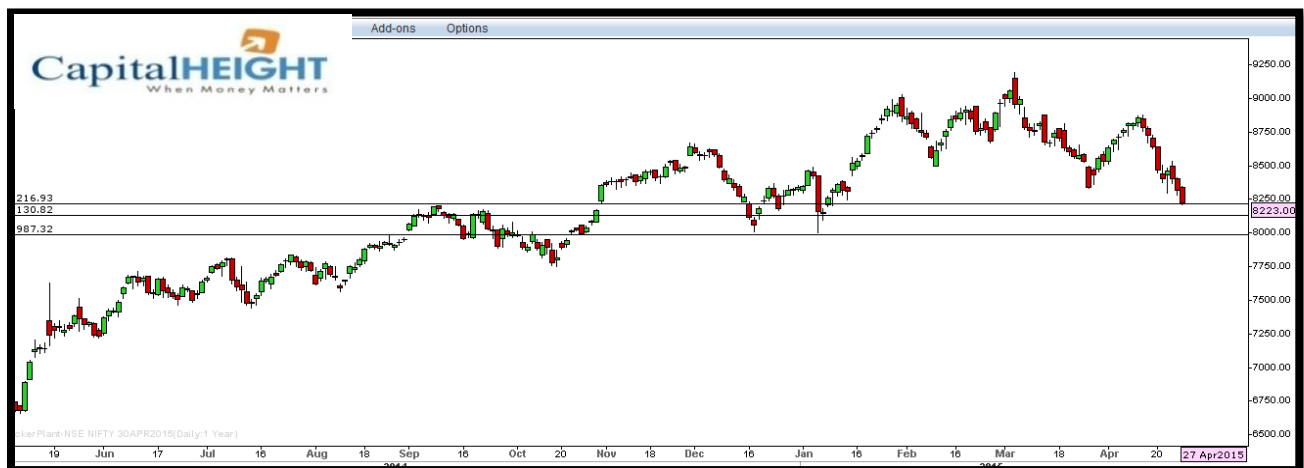
Trend: - Consolidate

Resistance: - 8380, 8410

Support: - 8330, 8300

Strategy: - Buy on dips

NIFTY DAILY



BANK NIFTY

DAILY PIVOT

SCRIPT	R4	R3	R2	R1	P	S1	S2	S3	S4
BANK NIFTY	18756	18613	18470	18392	18327	18249	18184	18041	17898

OUTLOOK

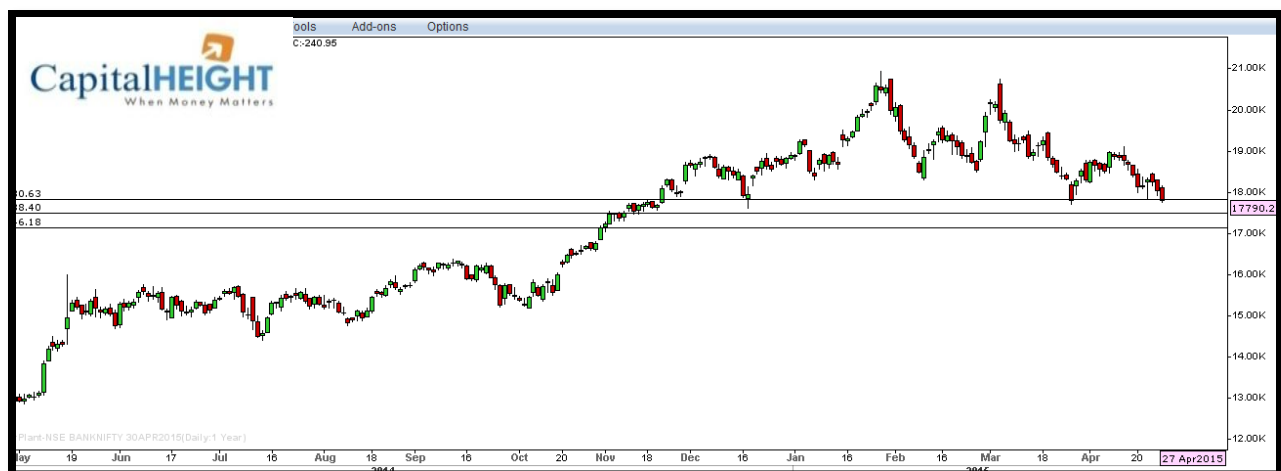
Trend: - Consolidate

Resistance: - 18390, 18470

Support: - 18250, 18180

Strategy: - Buy on dips

BANK NIFTY DAILY



Disclaimer

The information and views in this report, our website & all the service we provide are believed to be reliable, but we do not accept any responsibility (or liability) for errors of fact or opinion. Users have the right to choose the product/s that suits them the most.

Sincere efforts have been made to present the right investment perspective. The information contained herein is based on analysis and up on sources that we consider reliable.

This material is for personal information and based upon it & takes no responsibility

The information given herein should be treated as only factor, while making investment decision. The report does not provide individually tailor-made investment advice. Money CapitalHeight Research investment advisors Pvt. Ltd. recommends that investors independently evaluate particular investments and strategies, and encourages investors to seek the advice of a financial adviser. Money CapitalHeight Research investment advisors Pvt. Ltd. shall not be responsible for any transaction conducted based on the information given in this report, which is in violation of rules and regulations of NSE and BSE.

The share price projections shown are not necessarily indicative of future price performance. The information herein, together with all estimates and forecasts, can change without notice. Analyst or any person related to Money CapitalHeight Research investment advisors Pvt. Ltd. might be holding positions in the stocks recommended. It is understood that anyone who is browsing through the site has done so at his free will and does not read any views expressed as a recommendation for which either the site or its owners or anyone can be held responsible for. Any surfing and reading of the information is the acceptance of this disclaimer.

All Rights Reserved.

Investment in Commodity and equity market has its own risks.

We, however, do not vouch for the accuracy or the completeness thereof. **we are not responsible for any loss incurred whatsoever for any financial profits or loss which may arise from the recommendations above.** Money CapitalHeight Research investment advisors Pvt. Ltd. does not purport to be an invitation or an offer to buy or sell any financial instrument. **Our Clients (Paid Or Unpaid), Any third party or anyone else have no rights to forward or share our calls or SMS or Report or Any Information Provided by us to/with anyone which is received directly or indirectly by them. If found so then Serious Legal Actions can be taken.**