

Daily Newsletter-Equity

31/07/2015




CapitalHEIGHT
When Money Matters

www.capitalheight.com

MARKET WRAP

- ▶ Indian markets ended positive note. Nifty and Sensex up by 0.56% and 0.51%.
- ▶ Asia-Pacific traded mixed. Hang Seng down by 0.5% and Kospi down by 0.92%.
- ▶ Wall St. flat. USD Core Durable Goods Orders up by 0.85. Dow fut. up 75 pts.

Indian broad indices showed upside movement and closed on positive note. On sectorial front Realty, FMCG, Pharma and Auto were highly up while IT Sector down by 0.66%. Sensex was up by 191 points at 27705 & Nifty went up by 46 points to settle at 8421 level. European markets trade upside.

Stock Recommendation



Capital Height's

Stock recommendation for 31/7/2015 is Tataelexi. In today's trading session it was up by 5.78%. Its long term trend is up. On daily chart MACD & RSI has given buying confirmation. On daily chart its short term support level is 1685. All the indicators

are suggesting that one can go for long position in this stock above 1735 levels. The stock may test level of 1780-1820 in coming days.

Our recommendation on Emami Ltd is **long** above 1735 levels for target of 1780-1820.

MARKET PERFORMANCE

Sectorial Indices

INDEX	P. CLOSE	OPEN	HIGH	LOW	LAST	% CHANGE
CNX Nifty	8375.05	8417.00	8458.90	8408.30	8421.80	0.56
CNX Nifty Junior	20421.60	20516.85	20676.90	20512.35	20571.70	0.74
India VIX	15.88	15.88	15.88	14.66	15.33	-3.48
CNX 100	8485.50	8527.55	8572.80	8522.60	8535.25	0.59
CNX 500	6974.15	7008.75	7046.15	7006.55	7019.60	0.65
CNX Midcap	13457.35	13525.05	13613.80	13517.80	13568.15	0.82
Nifty Midcap 50	3369.55	3387.75	3422.50	3375.60	3416.80	1.40
Bank Nifty	18323.40	18383.00	18521.75	18367.20	18440.40	0.64
CNX Energy	8669.10	8700.45	8749.45	8688.25	8716.05	0.54
CNX FMCG	19975.95	20045.05	20605.10	19936.75	20544.05	2.84
CNX IT	11470.70	11530.30	11539.45	11365.05	11394.55	-0.66
CNX Media	2428.55	2449.35	2452.05	2414.80	2428.00	-0.02
CNX Metal	2097.95	2108.60	2110.05	2089.40	2095.70	-0.11
CNX MNC	10217.30	10273.20	10355.05	10251.10	10290.55	0.72
CNX Pharma	11978.40	12049.10	12095.15	11954.05	12073.10	0.79
CNX PSE	3501.20	3520.95	3525.45	3509.00	3515.30	0.40
CNX PSU Bank	3150.35	3158.90	3270.55	3158.90	3258.85	3.44
CNX Realty	164.55	165.95	171.90	165.05	171.30	4.10

Index PE

Index PE	30July2015
Nifty	23.23
Sensex	22.12

Nifty Stats

Market Breadth	NSE	BSE
Advance	33	1746
Decline	17	1117
Same	00	107

Macro Economic Data

Economic Data	Current	Previous
Monthly Inflation (m-o-m)	5.20%	4.38%
IIP Growth (m-o-m)	5.00%	2.60%
Repo Rate	7.25%	7.50%
Reserve Repo Rate	7.00%	7.00%
CRR	4.00%	4.00%
GDP Growth (Q-o-Q)	7.50%	5.30%

Index Movers (Pulling Up/Down)

Company Name	Contribution/Up	Company Name	Contribution/Down
ITC	17.85	Kotak Mahindra	-2.22
HDFC	9.96	Larsen	-3.69
Dr Reddys Labs	6.83	Sun Pharma	-3.97
Cipla	4.38	TCS	-4.08
HUL	4.33	Infosys	-8.00

Nifty Gainers/ Losers

Symbol	Close Price	% Change	Symbol	Close Price	% Change
PNB	151.05	9.73	NMDC	102.30	-2.11
BANKBARODA	167.40	9.27	SUNPHARMA	814.50	-1.84
DRREDDY	3930.00	5.86	HINDALCO	104.90	-1.55
CIPLA	713.85	5.05	TCS	2472.80	-1.35
ITC	317.50	4.44	KOTAKBANK	718.00	-1.10

52 Week High/ Low

Symbol	Close Price	% Change	Symbol	Close Price	% Change
AARTIIND	406.00	2.43	AUSTRAL	0.50	0
AARVEEDEN	73.55	19.98	AXISGOLD	2355.00	-0.06
ABIRLANUVO	2194.95	-0.05	BIRLACOT	0.10	100
ACE	51.80	13.72	CMAHENDRA	2.75	-1.79
AEGISCHEM	886.00	-2	DENABANK	44.60	4.82

Most Active Securities

Symbol	Close Price	% Change
INFY	1073.85	-1.06
BANKBARODA	167.40	9.27
DRREDDY	3930.00	5.86
HDFC	1333.00	1.60
ITC	317.50	4.44

Asian Markets

Name	Open	High	Low	Current Value	Change	% Chg
Nikkei 225	20450.61	20583.57	20443.89	20522.83	219.92	1.07
Hang Seng	24822.42	24872.70	24478.07	24497.98	-121.47	-0.5
Taiwan Weighted	8567.23	8697.18	8567.23	8651.49	88.01	1.02
KOSPI	2040.24	2044.93	2019.03	2019.03	-18.59	-0.92
Jakarta	4740.25	4754.72	4711.56	4712.49	-8.63	-0.18

DERIVATIVE CORNER

Most Active Call Options

Symbol	Expiry Date	Option type	Strike price	LTP	Traded volume (Contracts)	Traded value (Lakhs)	Open Interest
NIFTY	30-Jul-15	CE	8450	0.9	17,84,555	37,73,499.55	47,61,975
NIFTY	30-Jul-15	CE	8400	20.8	16,67,779	35,15,644.78	36,32,125
NIFTY	30-Jul-15	CE	8500	0.1	16,18,714	34,40,313.57	78,03,075
NIFTY	30-Jul-15	CE	18500	2.9	2,41,243	11,17,195.13	6,69,675
NIFTY	30-Jul-15	CE	8300	118	1,73,279	3,64,954.17	8,55,200

Most Active Put Options

Symbol	Expiry Date	Option type	Strike price	LTP	Traded volume (Contracts)	Traded value (Lakhs)	Open Interest
NIFTY	30-Jul-15	PE	8400	0.05	31,11,587	65,38,665.58	73,45,600
NIFTY	30-Jul-15	PE	8450	16.2	11,71,832	24,82,019.27	1,73,925
NIFTY	30-Jul-15	PE	8350	0.05	9,51,266	19,86,069.80	26,20,350
NIFTY	30-Jul-15	PE	8300	0.05	8,50,147	17,64,154.92	62,51,825
NIFTY	30-Jul-15	PE	8500	68.5	5,75,150	12,31,785.81	5,13,175

Securities in Ban (31-07-2015)

Securities In Ban		
INDIACEM	AMTEKAUTO	DISHTV
CENTURYTEXT	JINDALSTEEL	-

F&O Trade Statistics

Product	No Of Contracts	Turnover In Rs. (Cr)	Put Call Ratio
Index Futures	8,14,256	20024.38	-
Stock Futures	22,57,227	61594.24	-
Index Options	1,11,87,156	2,56,196.79	0.79
Stock Options	6,33,990	18269.39	0.57
F&O Total	1,48,92,629	3,56,084.81	0.78

FII Trading Activity (NSE & BSE) In Crores

CATEGORY	DATE	BUY VALUE	SELL VALUE	NET VALUE
FII	30-Jul-2015	4256.77	4520.01	-186.24

DII Trading Activity (NSE & BSE) In Crores

CATEGORY	DATE	BUY VALUE	SELL VALUE	NET VALUE
DII	30-Jul-2015	1934.80	1292.11	642.69

Corporate Actions (31 Jul 2015)

EX-Dividend- Tata Chemicals, Geodrej Ind, Lakshmi Machine

Board Meeting (Purpose)

CESC, Force Motors, Bharat Immuno, Den Network (Quarterly results)

TECHNICAL VIEW

NIFTY

DAILY PIVOT

SCRIPT	R4	R3	R2	R1	P	S1	S2	S3	S4
NIFTY	8657	8587	8518	8468	8449	8398	8379	8310	8240

OUTLOOK

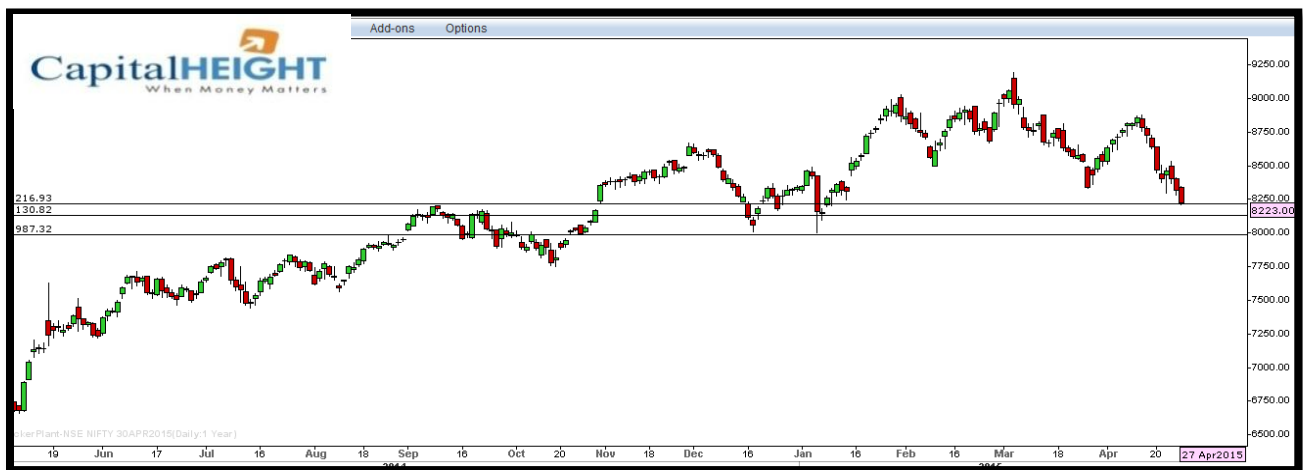
Trend: - Consolidate

Resistance: - 8470, 8520

Support: - 8400, 8370

Strategy: - Buy on dips

NIFTY DAILY



BANK NIFTY

DAILY PIVOT

SCRIPT	R4	R3	R2	R1	P	S1	S2	S3	S4
BANK NIFTY	18913	18778	18643	18541	18508	18406	18373	18238	18103

OUTLOOK

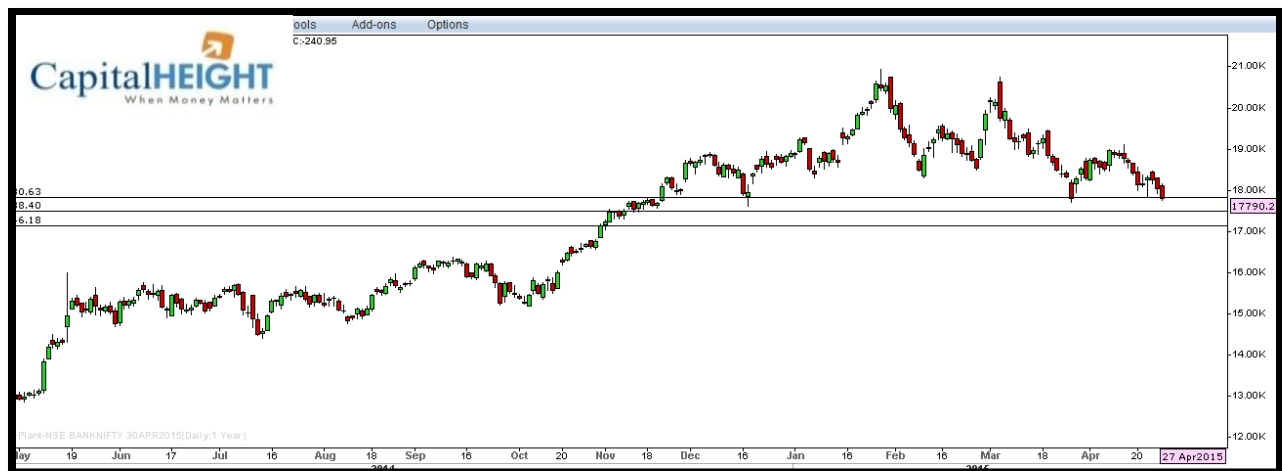
Trend: - Consolidate

Resistance: - 18540, 18650

Support: - 18400, 18370

Strategy: - Buy on dips

BANK NIFTY DAILY



Disclaimer

The information and views in this report, our website & all the service we provide are believed to be reliable, but we do not accept any responsibility (or liability) for errors of fact or opinion. Users have the right to choose the product/s that suits them the most.

Sincere efforts have been made to present the right investment perspective. The information contained herein is based on analysis and up on sources that we consider reliable.

This material is for personal information and based upon it & takes no responsibility

The information given herein should be treated as only factor, while making investment decision. The report does not provide individually tailor-made investment advice. Money CapitalHeight Research investment advisors Pvt. Ltd. recommends that investors independently evaluate particular investments and strategies, and encourages investors to seek the advice of a financial adviser. Money CapitalHeight Research investment advisors Pvt. Ltd. shall not be responsible for any transaction conducted based on the information given in this report, which is in violation of rules and regulations of NSE and BSE.

The share price projections shown are not necessarily indicative of future price performance. The information herein, together with all estimates and forecasts, can change without notice. Analyst or any person related to Money CapitalHeight Research investment advisors Pvt. Ltd. might be holding positions in the stocks recommended. It is understood that anyone who is browsing through the site has done so at his free will and does not read any views expressed as a recommendation for which either the site or its owners or anyone can be held responsible for. Any surfing and reading of the information is the acceptance of this disclaimer.

All Rights Reserved.

Investment in Commodity and equity market has its own risks.

We, however, do not vouch for the accuracy or the completeness thereof. **we are not responsible for any loss incurred whatsoever for any financial profits or loss which may arise from the recommendations above.** Money CapitalHeight Research investment advisors Pvt. Ltd. does not purport to be an invitation or an offer to buy or sell any financial instrument. **Our Clients (Paid Or Unpaid), Any third party or anyone else have no rights to forward or share our calls or SMS or Report or Any Information Provided by us to/with anyone which is received directly or indirectly by them. If found so then Serious Legal Actions can be taken.**