

# Daily Newsletter-Equity

6/08/2015



  
**CapitalHEIGHT**  
When Money Matters

[www.capitalheight.com](http://www.capitalheight.com)

# MARKET WRAP

- ▶ Indian markets ended positive note. Nifty and Sensex up by 0.60% and 0.54%.
- ▶ Asia Pacific traded upside Hang Seng up by 0.44% and Kospi up by 0.09%
- ▶ Wall St. Flat.USD ISM Manufacturing PMI down to 52.7. Dow fut. down 42 pts.

Indian broad indices showed mixed movement and closed on negative note. On sectorial front Energy, FMCG, Infra, IT and Media were up while Metal Sector down by 0.06%. Sensex was up by 151 points at 28223 & Nifty went up by 51 points to settle at 8567 level. European markets trade upside.

## Stock Recommendation



### Capital Height's

Stock recommendation for 06/8/2015 is NBCC. In today's trading session it was up by 12.49%. Its long term trend is up. On daily chart MACD & RSI has given buying confirmation. On daily chart its short term support level is 1150. All the indicators

are suggesting that one can go for long position in this stock above 1190 levels. The stock may test level of 1250-1300 in coming days.

Our recommendation on NBCC is **long** above 1190 levels for target of 1250-1300.

# MARKET PERFORMANCE

## Sectorial Indices

INDEX	P. CLOSE	OPEN	HIGH	LOW	LAST	% CHANGE
CNX Nifty	8516.90	8547.45	8591.85	8545.85	8567.95	0.60
CNX Nifty Junior	21305.80	21441.10	21567.45	21428.85	21499.90	0.91
India VIX	14.83	14.83	14.88	13.69	14.67	-1.11
CNX 100	8664.40	8699.30	8745.05	8699.30	8720.65	0.65
CNX 500	7136.30	7166.75	7207.95	7166.75	7186.25	0.70
CNX Midcap	14029.85	14118.45	14215.60	14118.45	14149.85	0.86
Nifty Midcap 50	3527.25	3547.60	3562.70	3533.15	3536.85	0.27
Bank Nifty	18972.60	19047.30	19103.70	18868.65	18928.55	-0.23
CNX Energy	8609.20	8629.70	8689.30	8613.90	8629.70	0.24
CNX FMCG	20922.00	20987.70	21154.55	20884.25	21117.80	0.94
CNX IT	11415.55	11470.20	11632.20	11460.00	11618.00	1.77
CNX Media	2472.75	2501.15	2534.25	2487.10	2521.25	1.96
CNX Metal	2167.70	2183.25	2211.50	2161.50	2166.50	-0.06
CNX MNC	10403.30	10454.55	10516.50	10433.20	10473.05	0.67
CNX Pharma	12361.95	12419.45	12594.45	12399.70	12572.55	1.70
CNX PSE	3529.85	3543.05	3556.20	3519.70	3524.45	-0.15
CNX PSU Bank	3650.70	3662.55	3690.35	3606.05	3617.60	-0.91
CNX Realty	176.20	177.15	184.30	177.15	181.60	3.06

## Index PE

Index PE	05 Aug 2015
Nifty	23.62
Sensex	22.57

## Nifty Stats

Market Breadth	NSE	BSE
Advance	24	1801
Decline	15	1157
Same	01	105

## Macro Economic Data

Economic Data	Current	Previous
Monthly Inflation (m-o-m)	5.20%	4.38%
IIP Growth (m-o-m)	5.00%	2.60%
Repo Rate	7.25%	7.50%
Reserve Repo Rate	7.00%	7.00%
CRR	4.00%	4.00%
GDP Growth (Q-o-Q)	7.50%	5.30%

## Index Movers (Pulling Up/Down)

Company Name	Contribution/Up	Company Name	Contribution/Down
Infosys	14.44	Coal India	-0.79
TCS	5.71	Yes Bank	-1.17
HDFC Bank	2.94	Tata Motors	-2.63
Wipro	2.92	SBI	-2.77
Sun Pharma	2.89	ICICI Bank	-3.98

## Nifty Gainers/ Losers

Symbol	Close Price	% Change	Symbol	Close Price	% Change
INFY	1086.65	2.78	BANKBARODA	188.45	-1.36
ZEEL	413.60	2.58	COALINDIA	437.70	-1.29
BAJAJ-AUTO	2576.10	2.56	YESBANK	831.00	-1.27
WIPRO	574.15	2.55	SBIN	284.95	-1.26
LUPIN	1681.00	2.47	TATAMOTORS	376.00	-1.25

## 52 Week High/ Low

Symbol	Close Price	% Change	Symbol	Close Price	% Change
3MINDIA	9950.00	5.71	AXISGOLD	2336.00	-0.54
ABBOTINDIA	4690.00	-0.08	BIRLACOT	0.10	0
ACCELYA	1165.00	3.25	GAIL	345.00	0.01
ACE	54.00	12.73	GOLDBEES	2251.90	-2.18
ADANITRANS	31.85	4.94	IDBIGOLD	2364.95	-1.8

## Most Active Securities

Symbol	Close Price	% Change
ICICIBANK	311.25	-0.89
SUZLON	27.05	10.86
RELIANCE	988.20	0.02
TATAMOTORS	376.00	-1.25
NBCC	1194.00	12.88

## Asian Markets

Name	Open	High	Low	Current Value	Change	% Chg
Nikkei 225	20490.15	20715.48	20469.87	20614.06	93.7	0.45
Hang Seng	24466.30	24582.19	24420.95	24514.16	108.04	0.44
Taiwan Weighted	8504.94	8563.01	8486.27	8542.27	31.41	0.37
KOSPI	2027.22	2035.25	2022.98	2029.76	1.77	0.09
Jakarta Composite	4786.39	4850.53	4780.97	4850.53	69.44	1.43

## DERIVATIVE CORNER

### Most Active Call Options

Symbol	Expiry Date	Option type	Strike price	LTP	Traded volume (Contracts)	Traded value (Lakhs)	Open Interest
NIFTY	27-Aug-15	CE	8700	60.2	4,65,370	10,19,404.62	38,42,925
NIFTY	27-Aug-15	CE	8600	104.35	4,34,250	9,45,216.78	29,80,475
NIFTY	27-Aug-15	CE	8800	30.85	3,48,312	7,69,074.64	48,06,275
NIFTY	27-Aug-15	CE	8900	14.5	2,43,708	5,43,177.61	25,26,400
NIFTY	27-Aug-15	CE	8500	164.15	1,70,948	3,70,346.88	19,60,500

### Most Active Put Options

Symbol	Expiry Date	Option type	Strike price	LTP	Traded volume (Contracts)	Traded value (Lakhs)	Open Interest
NIFTY	27-Aug-15	PE	8500	71.6	4,56,440	9,78,488.69	33,93,150
NIFTY	27-Aug-15	PE	8400	45.9	3,91,589	8,27,078.06	40,54,775
NIFTY	27-Aug-15	PE	8300	28.7	2,83,736	5,90,903.63	41,29,225
NIFTY	27-Aug-15	PE	8600	110.85	2,37,193	5,16,735.62	15,18,825
NIFTY	27-Aug-15	PE	8200	17.05	2,19,938	4,51,892.86	50,97,525

### Securities in Ban (06-08-2015)

Securities In Ban		
AMTEKAUTO	-	-
-	-	-

## F&O Trade Statistics

Product	No Of Contracts	Turnover In Rs. ( Cr)	Put Call Ratio
Index Futures	4,11,967	11485.35	-
Stock Futures	9,44,766	27858.44	-
Index Options	45,77,930	1,05,580.85	0.99
Stock Options	4,36,188	13041.09	0.44
<b>F&amp;O Total</b>	<b>63,70,851</b>	<b>1,57,965.73</b>	<b>0.92</b>

## FII Trading Activity (NSE & BSE) In Crores

CATEGORY	DATE	BUY VALUE	SELL VALUE	NET VALUE
FII	5-Aug-2015	4586.99	4138.79	447.9

## DII Trading Activity (NSE & BSE) In Crores

CATEGORY	DATE	BUY VALUE	SELL VALUE	NET VALUE
DII	5-Aug-2015	1364.6	1553.71	189.11

## Corporate Actions (5 Aug 2015)

**EX-Dividend-** ICRA, Divis Lab, Castrol, Amara Raja Battery

**Board Meeting (Purpose)**

Cummins, Esab India, Fortis Health, GEE (Quarterly results)

# TECHNICAL VIEW

## NIFTY

### DAILY PIVOT

SCRIPT	R4	R3	R2	R1	P	S1	S2	S3	S4
NIFTY	8773	8706	8639	8593	8572	8526	8505	8438	8371

### OUTLOOK

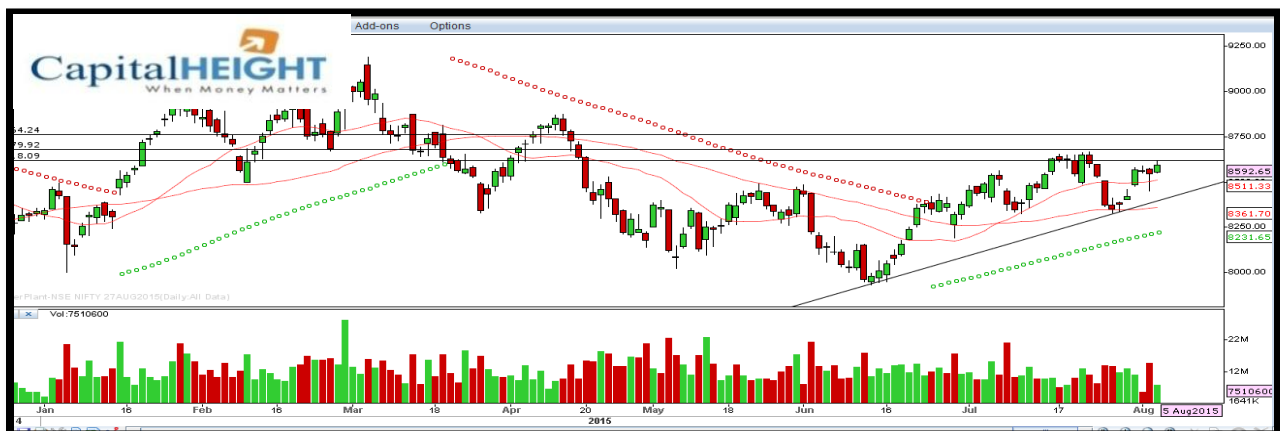
**Trend: - Consolidate**

**Resistance: - 8590, 8640**

**Support: - 8530, 8500**

**Strategy: - Buy on dips**

### NIFTY DAILY





## BANK NIFTY

### DAILY PIVOT

SCRIPT	R4	R3	R2	R1	P	S1	S2	S3	S4
BANK NIFTY	19730	19503	19276	19167	19049	18940	18822	18595	18368

### OUTLOOK

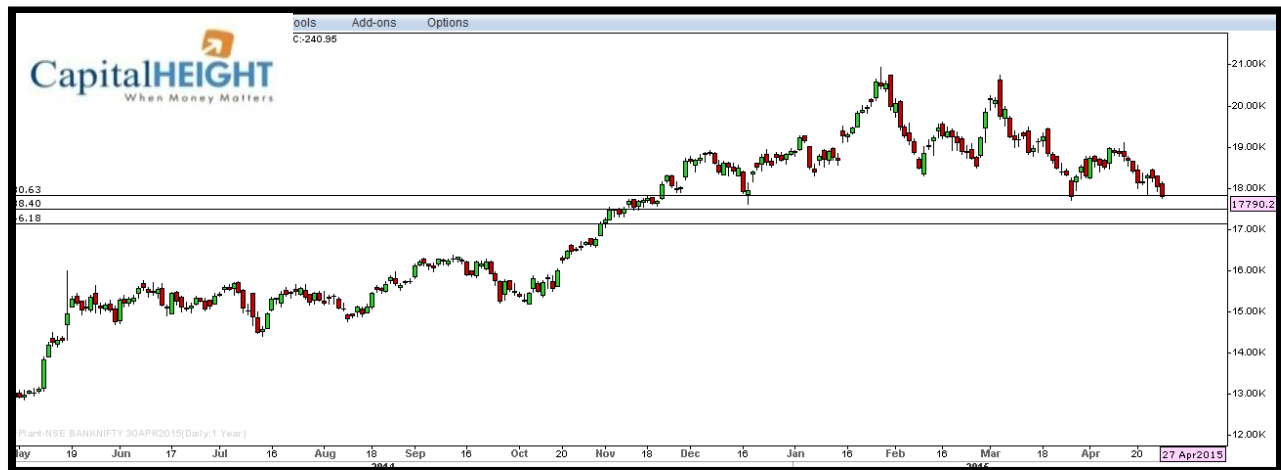
**Trend: - Consolidate**

**Resistance: - 19170, 19280**

**Support: - 18940, 18820**

**Strategy: - Buy on dips**

### BANK NIFTY DAILY



# Disclaimer

The information and views in this report, our website & all the service we provide are believed to be reliable, but we do not accept any responsibility (or liability) for errors of fact or opinion. Users have the right to choose the product/s that suits them the most.

Sincere efforts have been made to present the right investment perspective. The information contained herein is based on analysis and up on sources that we consider reliable.

**This material is for personal information and based upon it & takes no responsibility**

The information given herein should be treated as only factor, while making investment decision. The report does not provide individually tailor-made investment advice. Money CapitalHeight Research investment advisors Pvt. Ltd. recommends that investors independently evaluate particular investments and strategies, and encourages investors to seek the advice of a financial adviser. Money CapitalHeight Research investment advisors Pvt. Ltd. shall not be responsible for any transaction conducted based on the information given in this report, which is in violation of rules and regulations of NSE and BSE.

The share price projections shown are not necessarily indicative of future price performance. The information herein, together with all estimates and forecasts, can change without notice. Analyst or any person related to Money CapitalHeight Research investment advisors Pvt. Ltd. might be holding positions in the stocks recommended. It is understood that anyone who is browsing through the site has done so at his free will and does not read any views expressed as a recommendation for which either the site or its owners or anyone can be held responsible for. Any surfing and reading of the information is the acceptance of this disclaimer.

All Rights Reserved.

**Investment in Commodity and equity market has its own risks.**

We, however, do not vouch for the accuracy or the completeness thereof. **we are not responsible for any loss incurred whatsoever for any financial profits or loss which may arise from the recommendations above.** Money CapitalHeight Research investment advisors Pvt. Ltd. does not purport to be an invitation or an offer to buy or sell any financial instrument. **Our Clients (Paid Or Unpaid), Any third party or anyone else have no rights to forward or share our calls or SMS or Report or Any Information Provided by us to/with anyone which is received directly or indirectly by them. If found so then Serious Legal Actions can be taken.**