

Daily Newsletter-Equity

7/08/2015




CapitalHEIGHT
When Money Matters

www.capitalheight.com

MARKET WRAP

- ▶ Indian markets ended positive note. Nifty and Sensex up by 0.24% and 0.27%.
- ▶ Asia Pacific traded downside Hang Seng down by 0.57% and Kospi up by 0.82%
- ▶ Wall St. Flat.USD ISM Manufacturing PMI down to 52.7. Dow fut. down 2 pts.

Indian broad indices showed mixed movement and closed on positive note. On sectorial front Infra, Realty, Service and Pharma were up while FMCG Sector down by 0.84%. Sensex was up by 75 points at 28298 & Nifty went up by 20 points to settle at 8588 level. European markets trade mixed.

Stock Recommendation



Capital Height's

Stock recommendation for 07/8/2015 is BASF. In today's trading session it was up by 4.72%. Its long term trend is up. On daily chart MACD & RSI has given buying confirmation. On daily chart its short term support level is 1288. All the indicators

are suggesting that one can go for long position in this stock above 1350 levels. The stock may test level of 1400-1450 in coming days.

Our recommendation on BASF is **long** above 1350 levels for target of 1400-1450.

MARKET PERFORMANCE

Sectorial Indices

INDEX	P. CLOSE	OPEN	HIGH	LOW	LAST	% CHANGE
CNX Nifty	8567.95	8585.80	8606.30	8551.50	8588.65	0.24
CNX Nifty Junior	21499.90	21553.40	21608.80	21439.85	21594.05	0.44
India VIX	14.67	14.67	15.01	12.89	14.73	0.44
CNX 100	8720.65	8739.35	8758.50	8704.90	8744.50	0.27
CNX 500	7186.25	7203.30	7214.30	7174.35	7202.00	0.22
CNX Midcap	14149.85	14191.00	14203.85	14094.45	14137.40	-0.09
Nifty Midcap 50	3536.85	3543.90	3553.95	3522.95	3544.65	0.22
Bank Nifty	18928.55	18946.30	19100.55	18830.40	19029.35	0.53
CNX Energy	8629.70	8657.40	8662.75	8586.45	8593.50	-0.42
CNX FMCG	21117.80	21128.55	21133.50	20847.60	20941.20	-0.84
CNX IT	11618.00	11698.90	11739.10	11576.25	11616.50	-0.01
CNX Media	2521.25	2524.40	2528.80	2498.10	2515.95	-0.21
CNX Metal	2166.50	2168.95	2173.25	2148.65	2154.40	-0.56
CNX MNC	10473.05	10503.65	10549.00	10434.40	10526.60	0.51
CNX Pharma	12572.55	12621.95	12788.85	12621.95	12697.50	0.99
CNX PSE	3524.45	3528.70	3542.30	3516.10	3520.15	-0.12
CNX PSU Bank	3617.60	3610.10	3684.35	3574.30	3666.25	1.34
CNX Realty	181.60	181.65	184.50	180.70	182.95	0.74

Index PE

Index PE	06 Aug 2015
Nifty	23.67
Sensex	22.66

Nifty Stats

Market Breadth	NSE	BSE
Advance	30	1378
Decline	20	1552
Same	00	104

Macro Economic Data

Economic Data	Current	Previous
Monthly Inflation (m-o-m)	5.20%	4.38%
IIP Growth (m-o-m)	5.00%	2.60%
Repo Rate	7.25%	7.50%
Reserve Repo Rate	7.00%	7.00%
CRR	4.00%	4.00%
GDP Growth (Q-o-Q)	7.50%	5.30%

Index Movers (Pulling Up/Down)

Company Name	Contribution/Up	Company Name	Contribution/Down
Larsen	9.77	Asian Paints	-0.79
Tata Motors	3.63	Coal India	-1.02
TCS	3.5	Tech Mahindra	-2.38
Kotak Mahindra	3.1	Reliance	-3.57
SBI	2.83	ITC	-7.10

Nifty Gainers/ Losers

Symbol	Close Price	% Change	Symbol	Close Price	% Change
LT	1832.00	2.94	TECHM	532.50	-3.29
DRREDDY	4285.00	2.22	ITC	325.70	-1.84
KOTAKBANK	705.40	1.95	COALINDIA	430.55	-1.81
PNB	161.75	1.73	ASIANPAINT	912.25	-1.20
TATAMOTORS	382.60	1.65	VEDL	126.35	-1.06

52 Week High/ Low

Symbol	Close Price	% Change	Symbol	Close Price	% Change
3MINDIA	10574.95	6.14	20MICRONS	28.35	-4.22
ABBOTINDIA	4787.00	2.2	ADI	208.00	-2.12
ABIRLANUVO	2340.00	2.75	ALMONDZ	9.20	0.55
ADANITRANS	33.40	4.87	AXISGOLD	2330.00	-0.72
AIL	858.00	3.01	BIRLACOT	0.05	-50

Most Active Securities

Symbol	Close Price	% Change
SBIN	290.00	1.61
INFY	1088.00	0.15
ICICIBANK	311.50	0.05
LT	1832.00	2.94
HDFC	1307.00	0.35

Asian Markets

Name	Open	High	Low	Current Value	Change	% Chg
Nikkei 225	20768.77	20817.48	20664.44	20664.44	50.38	0.24
Hang Seng	24527.74	24527.74	24320.75	24375.28	-138.88	-0.57
Taiwan Weighted	8564.55	8586.24	8404.67	8449.56	-92.71	-1.1
KOSPI	2037.26	2038.41	2011.60	2013.29	-16.47	-0.82
Jakarta Composite	4855.94	4868.07	4806.56	4806.56	-43.97	-0.91

DERIVATIVE CORNER

Most Active Call Options

Symbol	Expiry Date	Option type	Strike price	LTP	Traded volume (Contracts)	Traded value (Lakhs)	Open Interest
NIFTY	27-Aug-15	CE	8700	64.9	4,44,338	9,73,326.83	38,92,400
NIFTY	27-Aug-15	CE	8600	113	4,31,067	9,38,422.08	33,04,025
NIFTY	27-Aug-15	CE	8800	33.9	3,54,023	7,81,645.61	48,62,550
NIFTY	27-Aug-15	CE	8900	16.05	2,44,262	5,44,387.94	25,76,450
NIFTY	27-Aug-15	CE	9000	7.45	1,68,146	3,78,610.99	39,80,650

Most Active Put Options

Symbol	Expiry Date	Option type	Strike price	LTP	Traded volume (Contracts)	Traded value (Lakhs)	Open Interest
NIFTY	27-Aug-15	PE	8500	65.55	4,62,225	9,90,263.91	37,70,325
NIFTY	27-Aug-15	PE	8400	41.1	3,74,971	7,91,580.65	45,66,475
NIFTY	27-Aug-15	PE	8600	102	2,81,215	6,12,108.04	18,10,400
NIFTY	27-Aug-15	PE	8300	24.5	2,78,134	5,78,983.90	42,22,250
NIFTY	27-Aug-15	PE	8200	14.2	2,23,325	4,58,714.57	57,74,625

Securities in Ban (07-08-2015)

Securities In Ban		
AMTEKAUTO	IBREALEST	-
-	-	-

F&O Trade Statistics

Product	No Of Contracts	Turnover In Rs. (Cr)	Put Call Ratio
Index Futures	4,19,262	11861.41	-
Stock Futures	9,01,538	26304.46	-
Index Options	45,82,344	1,06,247.16	1.02
Stock Options	4,08,353	12136.46	0.49
F&O Total	63,11,497	1,56,549.49	0.96

FII Trading Activity (NSE & BSE) In Crores

CATEGORY	DATE	BUY VALUE	SELL VALUE	NET VALUE
FII	6-Aug-2015	4000.70	3891.77	108.93

DII Trading Activity (NSE & BSE) In Crores

CATEGORY	DATE	BUY VALUE	SELL VALUE	NET VALUE
DII	6-Aug-2015	1432.06	1543.84	111.78

Corporate Actions (7 Aug 2015)

EX-Dividend- Indusind Bank, LIC Housing Fin, HCL Tech

Board Meeting (Purpose)

20 Micron, BHEL, D-Link Data (Quarterly results)

TECHNICAL VIEW

NIFTY

DAILY PIVOT

SCRIPT	R4	R3	R2	R1	P	S1	S2	S3	S4
NIFTY	8824	2749	8674	8633	8599	8558	8524	8449	8374

OUTLOOK

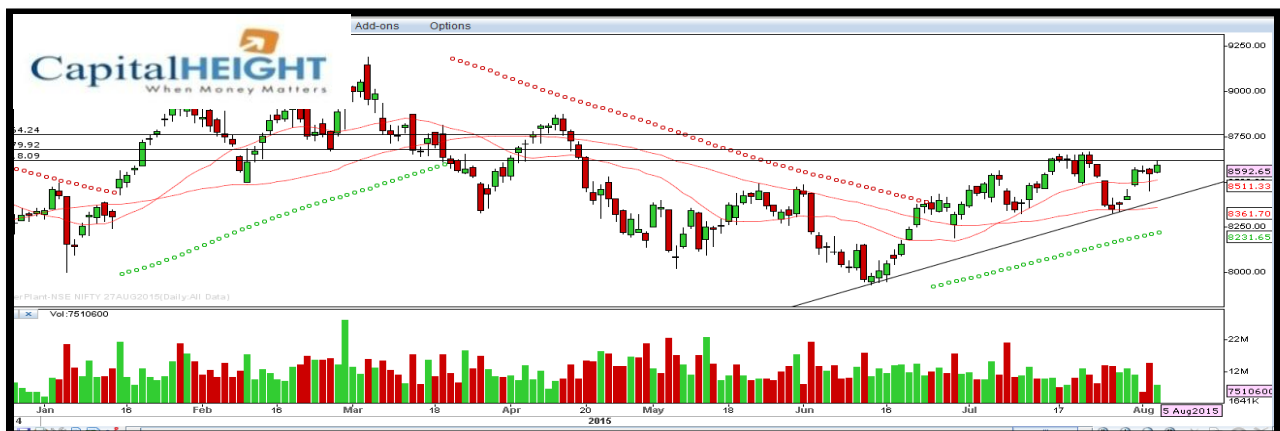
Trend: - Consolidate

Resistance: - 8630, 8680

Support: - 8550, 8520

Strategy: - Buy on dips

NIFTY DAILY



BANK NIFTY

DAILY PIVOT

SCRIPT	R4	R3	R2	R1	P	S1	S2	S3	S4
BANK NIFTY	19945	19641	19337	19176	19033	18872	18729	18425	18121

OUTLOOK

Trend: - Consolidate

Resistance: - 19180, 19340

Support: - 18870, 18730

Strategy: - Buy on dips

BANK NIFTY DAILY



Disclaimer

The information and views in this report, our website & all the service we provide are believed to be reliable, but we do not accept any responsibility (or liability) for errors of fact or opinion. Users have the right to choose the product/s that suits them the most.

Sincere efforts have been made to present the right investment perspective. The information contained herein is based on analysis and up on sources that we consider reliable.

This material is for personal information and based upon it & takes no responsibility

The information given herein should be treated as only factor, while making investment decision. The report does not provide individually tailor-made investment advice. Money CapitalHeight Research investment advisors Pvt. Ltd. recommends that investors independently evaluate particular investments and strategies, and encourages investors to seek the advice of a financial adviser. Money CapitalHeight Research investment advisors Pvt. Ltd. shall not be responsible for any transaction conducted based on the information given in this report, which is in violation of rules and regulations of NSE and BSE.

The share price projections shown are not necessarily indicative of future price performance. The information herein, together with all estimates and forecasts, can change without notice. Analyst or any person related to Money CapitalHeight Research investment advisors Pvt. Ltd. might be holding positions in the stocks recommended. It is understood that anyone who is browsing through the site has done so at his free will and does not read any views expressed as a recommendation for which either the site or its owners or anyone can be held responsible for. Any surfing and reading of the information is the acceptance of this disclaimer.

All Rights Reserved.

Investment in Commodity and equity market has its own risks.

We, however, do not vouch for the accuracy or the completeness thereof. **we are not responsible for any loss incurred whatsoever for any financial profits or loss which may arise from the recommendations above.** Money CapitalHeight Research investment advisors Pvt. Ltd. does not purport to be an invitation or an offer to buy or sell any financial instrument. **Our Clients (Paid Or Unpaid), Any third party or anyone else have no rights to forward or share our calls or SMS or Report or Any Information Provided by us to/with anyone which is received directly or indirectly by them. If found so then Serious Legal Actions can be taken.**