

# Daily Newsletter-Equity

10/08/2015



  
**CapitalHEIGHT**  
When Money Matters

[www.capitalheight.com](http://www.capitalheight.com)

# MARKET WRAP

- ▶ Indian markets ended negative note. Nifty and Sensex up by 0.28% and 0.22%.
- ▶ Asia Pacific traded mixed Hang Seng up by 0.72% and Kospi down by 0.15%
- ▶ Wall St. Flat.USD ISM Manufacturing PMI down to 52.7. Dow fut. down 97 pts.

Indian broad indices showed mixed movement and closed on positive note. On sectorial front Infra, Realty, Service and Pharma were down while Auto Sector up by 0.07%. Sensex was up by 61 points at 28236 & Nifty went up by 24 points to settle at 8564 level. European markets trade down.

## Stock Recommendation



### Capital Height's

Stock recommendation for 10/8/2015 is GRUH. In today's trading session it was up by 3.51%. Its long term trend is up. On daily chart MACD & RSI has given buying confirmation. On daily chart its short term support level is 251. All the indicators are

suggesting that one can go for long position in this stock above 268 levels. The stock may test level of 275-285 in coming days.

Our recommendation on GRUH is **long** above 268 levels for target of 275-285.

# MARKET PERFORMANCE

## Sectorial Indices

INDEX	P. CLOSE	OPEN	HIGH	LOW	LAST	% CHANGE
CNX Nifty	8588.65	8580.80	8595.95	8552.70	8564.60	-0.28
CNX Nifty Junior	21594.05	21630.95	21667.65	21478.15	21520.30	-0.34
India VIX	14.73	14.73	15.07	13.17	14.91	1.22
CNX 100	8744.50	8740.15	8754.95	8707.50	8719.10	-0.29
CNX 500	7202.00	7200.20	7213.00	7175.00	7183.85	-0.25
CNX Midcap	14137.40	14151.95	14197.30	14092.20	14114.95	-0.16
Nifty Midcap 50	3544.65	3546.65	3562.80	3524.15	3539.90	-0.13
Bank Nifty	19029.35	18992.80	19019.65	18849.15	18893.55	-0.71
CNX Energy	8593.50	8589.80	8700.70	8589.80	8662.70	0.81
CNX FMCG	20941.20	20880.85	20944.85	20823.65	20900.95	-0.19
CNX IT	11616.50	11604.45	11663.60	11580.35	11597.05	-0.17
CNX Media	2515.95	2519.45	2528.05	2485.25	2491.55	-0.97
CNX Metal	2154.40	2158.40	2170.80	2127.00	2131.95	-1.04
CNX MNC	10526.60	10575.60	10585.55	10521.90	10535.20	0.08
CNX Pharma	12697.50	12745.70	12749.55	12627.05	12641.05	-0.44
CNX PSE	3520.15	3518.45	3538.95	3483.95	3509.95	-0.29
CNX PSU Bank	3666.25	3655.10	3655.10	3565.75	3579.35	-2.37
CNX Realty	182.95	182.55	183.85	180.80	182.75	-0.11

## Index PE

Index PE	07 Aug 2015
Nifty	23.61
Sensex	22.59

## Nifty Stats

Market Breadth	NSE	BSE
Advance	16	1362
Decline	34	1577
Same	00	102

## Macro Economic Data

Economic Data	Current	Previous
Monthly Inflation (m-o-m)	5.20%	4.38%
IIP Growth (m-o-m)	5.00%	2.60%
Repo Rate	7.25%	7.50%
Reserve Repo Rate	7.00%	7.00%
CRR	4.00%	4.00%
GDP Growth (Q-o-Q)	7.50%	5.30%

## Index Movers (Pulling Up/Down)

Company Name	Contribution/Up	Company Name	Contribution/Down
ONGC	7.36	Coal India	-3.05
Tata Motors	7.08	Bosch	-3.28
Infosys	4.89	TCS	-3.61
Reliance	2.78	BHEL	-4.04
Sun Pharma	1.82	SBI	-7.63

## Nifty Gainers/ Losers

Symbol	Close Price	% Change	Symbol	Close Price	% Change
ONGC	282.55	4.28	BHEL	266.70	-5.58
TATAMOTORS	392.75	2.52	COALINDIA	415.40	-3.71
VEDL	129.35	2.17	SBIN	281.95	-2.46
BPCL	958.95	2.17	BANKBARODA	185.65	-1.98
GRASIM	3808.00	1.49	BOSCHLTD	25947.95	-1.70

## 52 Week High/ Low

Symbol	Close Price	% Change	Symbol	Close Price	% Change
AARTIIND	429.05	5.2	ADI	194.00	-7.4
ABBOTINDIA	4797.00	0	AXISGOLD	2336.90	0.25
ADANITRANS	35.05	4.94	BIRLACOT	0.05	0
AMBIKCO	1125.00	7.17	GAIL	341.80	-0.34
APARINDS	427.35	-3.79	GOLDBEES	2258.00	-1.18

## Most Active Securities

Symbol	Close Price	% Change
BHEL	266.70	-5.58
TATAMOTORS	392.75	2.52
SBIN	281.95	-2.46
M&M	1385.90	-0.81
COALINDIA	415.40	-3.71

## Asian Markets

Name	Open	High	Low	Current Value	Change	% Chg
Nikkei 225	20601.57	20754.00	20567.51	20724.56	60.12	0.29
Hang Seng	24327.56	24641.93	24327.56	24552.47	177.19	0.72
Taiwan Weighted	8409.01	8458.04	8368.40	8442.29	-7.27	-0.09
KOSPI	2009.39	2012.90	2001.13	2010.23	-3.06	-0.15
Jakarta Composite	4801.66	4804.33	4760.91	4770.3	-36.26	-0.76

## DERIVATIVE CORNER

### Most Active Call Options

Symbol	Expiry Date	Option type	Strike price	LTP	Traded volume (Contracts)	Traded value (Lakhs)	Open Interest
NIFTY	27-Aug-15	CE	8600	102.9	3,96,202	8,62,042.44	32,91,000
NIFTY	27-Aug-15	CE	8700	57.5	3,88,004	8,49,592.96	38,93,050
NIFTY	27-Aug-15	CE	8800	28	2,85,648	6,30,510.12	52,36,950
NIFTY	27-Aug-15	CE	8900	12.75	2,10,206	4,68,410.44	24,95,800
NIFTY	27-Aug-15	CE	9000	5.75	1,14,988	2,58,898.93	39,69,325

### Most Active Put Options

Symbol	Expiry Date	Option type	Strike price	LTP	Traded volume (Contracts)	Traded value (Lakhs)	Open Interest
NIFTY	27-Aug-15	PE	8500	67.6	3,99,636	8,56,110.23	37,02,125
NIFTY	27-Aug-15	PE	8400	42	2,96,437	6,25,705.14	44,41,825
NIFTY	27-Aug-15	PE	8600	105.5	2,73,046	5,94,349.47	20,49,275
NIFTY	27-Aug-15	PE	8300	24.7	1,85,890	3,86,915.63	44,23,250
NIFTY	27-Aug-15	PE	8200	14.3	1,62,861	3,34,469.26	61,03,125

### Securities in Ban (10-08-2015)

Securities In Ban		
AMTEKAUTO	IBREALEST	-
-	-	-

## F&O Trade Statistics

Product	No Of Contracts	Turnover In Rs. ( Cr)	Put Call Ratio
Index Futures	3,12,881	8808.05	-
Stock Futures	8,49,314	25084.11	-
Index Options	37,07,439	86112.05	0.99
Stock Options	4,51,575	13054.46	0.52
<b>F&amp;O Total</b>	<b>53,21,209</b>	<b>1,33,058.66</b>	<b>0.92</b>

## FII Trading Activity (NSE & BSE) In Crores

CATEGORY	DATE	BUY VALUE	SELL VALUE	NET VALUE
FII	7-Aug-2015	3641.31	3735.05	<b>93.74</b>

## DII Trading Activity (NSE & BSE) In Crores

CATEGORY	DATE	BUY VALUE	SELL VALUE	NET VALUE
DII	7-Aug-2015	1792.2	1758.12	<b>34.08</b>

## Corporate Actions (10 Aug 2015)

**EX-Dividend-** Bharat Elec, HCL Tech, Lumax Inds

**Board Meeting (Purpose)**

Emami Infra, eClerks Services, Crane Infra (Quarterly results)

# TECHNICAL VIEW

## NIFTY

### DAILY PIVOT

SCRIPT	R4	R3	R2	R1	P	S1	S2	S3	S4
NIFTY	8735	8691	8647	8631	8603	8587	8559	8515	8471

### OUTLOOK

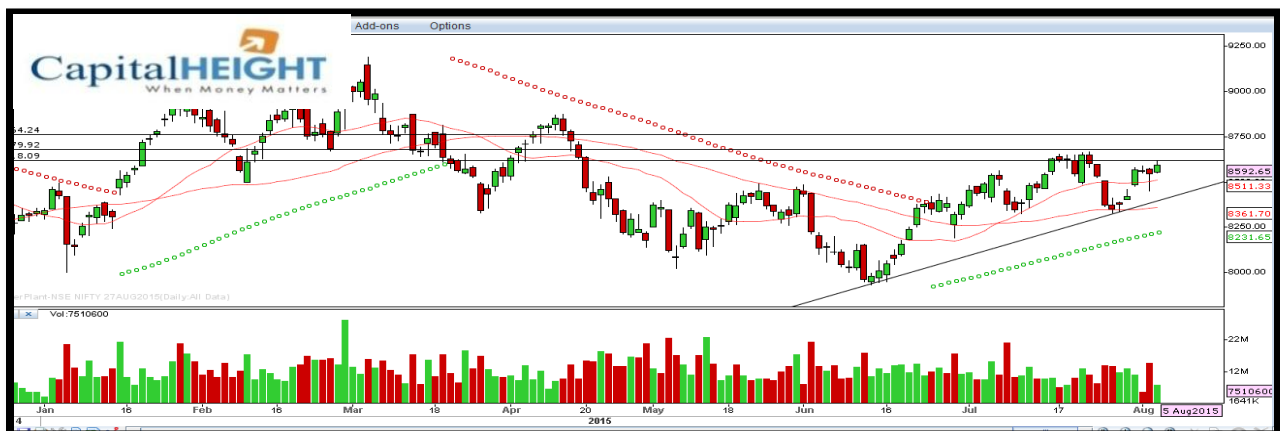
**Trend: - Consolidate**

**Resistance: - 8630, 8650**

**Support: - 8590, 8560**

**Strategy: - Buy on dips**

## NIFTY DAILY





## BANK NIFTY

### DAILY PIVOT

SCRIPT	R4	R3	R2	R1	P	S1	S2	S3	S4
BANK NIFTY	19509	19350	19191	19144	19032	18985	18873	18714	18555

### OUTLOOK

**Trend: - Consolidate**

**Resistance: - 19150, 19200**

**Support: - 18980, 18870**

**Strategy: - Buy on dips**

### BANK NIFTY DAILY



# Disclaimer

The information and views in this report, our website & all the service we provide are believed to be reliable, but we do not accept any responsibility (or liability) for errors of fact or opinion. Users have the right to choose the product/s that suits them the most.

Sincere efforts have been made to present the right investment perspective. The information contained herein is based on analysis and up on sources that we consider reliable.

**This material is for personal information and based upon it & takes no responsibility**

The information given herein should be treated as only factor, while making investment decision. The report does not provide individually tailor-made investment advice. Money CapitalHeight Research investment advisors Pvt. Ltd. recommends that investors independently evaluate particular investments and strategies, and encourages investors to seek the advice of a financial adviser. Money CapitalHeight Research investment advisors Pvt. Ltd. shall not be responsible for any transaction conducted based on the information given in this report, which is in violation of rules and regulations of NSE and BSE.

The share price projections shown are not necessarily indicative of future price performance. The information herein, together with all estimates and forecasts, can change without notice. Analyst or any person related to Money CapitalHeight Research investment advisors Pvt. Ltd. might be holding positions in the stocks recommended. It is understood that anyone who is browsing through the site has done so at his free will and does not read any views expressed as a recommendation for which either the site or its owners or anyone can be held responsible for. Any surfing and reading of the information is the acceptance of this disclaimer.

All Rights Reserved.

**Investment in Commodity and equity market has its own risks.**

We, however, do not vouch for the accuracy or the completeness thereof. **we are not responsible for any loss incurred whatsoever for any financial profits or loss which may arise from the recommendations above.** Money CapitalHeight Research investment advisors Pvt. Ltd. does not purport to be an invitation or an offer to buy or sell any financial instrument. **Our Clients (Paid Or Unpaid), Any third party or anyone else have no rights to forward or share our calls or SMS or Report or Any Information Provided by us to/with anyone which is received directly or indirectly by them. If found so then Serious Legal Actions can be taken.**