

Weekly Newsletter-Agri Commodity

10/8/2015




CapitalHEIGHT
When Money Matters

www.capitalheight.com

Weekly News Letter-Agri

Contents

- ▶ **Market Wrap**
 - ▶ Chana
 - ▶ Dhaniya
 - ▶ Jeera
 - ▶ Turmeric
- ▶ **Technical Analysis**
 - ▶ Chana
 - ▶ Dhaniya
 - ▶ Jeera
 - ▶ Turmeric

MARKET WRAP

CHANA

- ▶ Chana future was weak during the week and closed on weak note after consolidation.
- ▶ There is strong trendline support and resistance also in daily and weekly chart so further selling is expected upto support levels.

DHANIYA

- ▶ Dhaniya future was weak during the week and closed on lower levels so selling might be seen on Monday.
- ▶ There is trendline supports in Dhaniya so buying may emerge from the dips after consolidation.

JEERA

- ▶ Jeera future was trading moderately weak even high volatility. Lack of demand in physical market kept price weak but lower production supported the prices.
- ▶ There is trend line in weekly chart which acting as crucial resistance so next week slightly downside movement is expected.

TURMERIC

- ▶ Turmeric is moving in a range bound channel so further selling is expected due to trendline resistance.
- ▶ In weekly chart Turmeric is moving in a range bound channel so further selling may emerge in next week.

TECHNICAL VIEW

CHANA

WEEKLY PIVOT

| SCRIPT | R4 | R3 | R2 | R1 | P | S1 | S2 | S3 | S4 |
|--------|------|------|------|------|------|------|------|------|------|
| CHANA | 5502 | 5137 | 4772 | 4564 | 4407 | 4199 | 4042 | 3677 | 3712 |

OUTLOOK

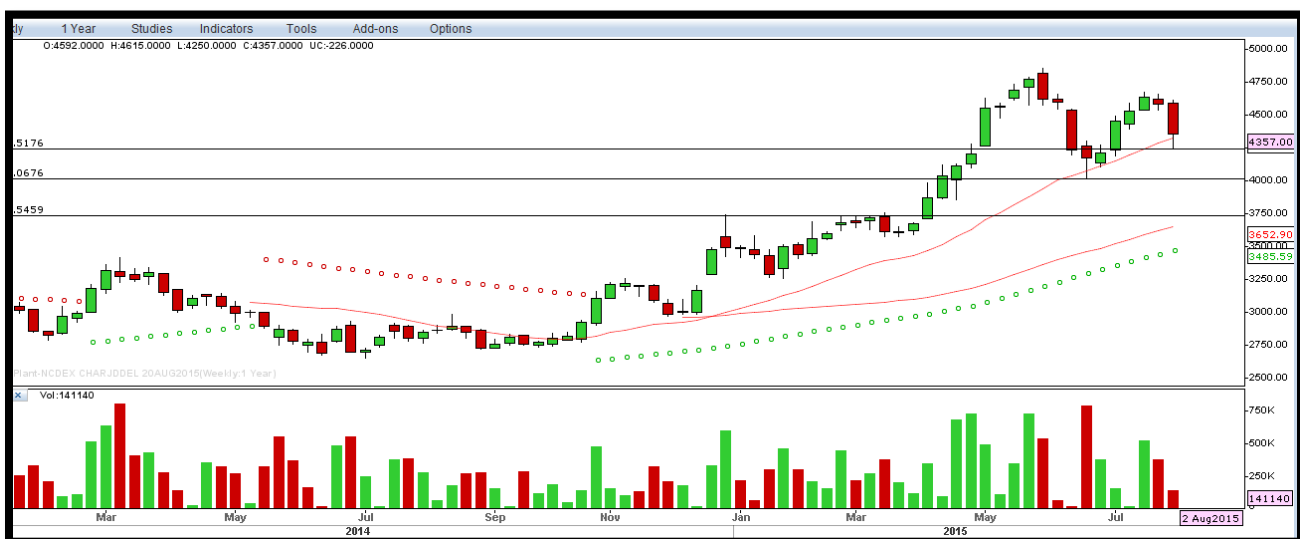
Trend: Consolidate

Resistance: 4560, 4770

Support: 4200, 4040

Strategy: Sell on highs

CHANA WEEKLY



DHANIYA

WEEKLY PIVOT

| SCRIPT | R4 | R3 | R2 | R1 | P | S1 | S2 | S3 | S4 |
|---------|-------|-------|-------|-------|-------|------|------|------|------|
| DHANIYA | 14432 | 13146 | 11860 | 11177 | 10574 | 9891 | 9288 | 8002 | 6716 |

OUTLOOK

Trend: Consolidate

Resistance: 11860, 13140

Support: 9890, 9280

Strategy: Sell on highs

DHANIYA WEEKLY



JEERA

WEEKLY PIVOT

| SCRIPT | R4 | R3 | R2 | R1 | P | S1 | S2 | S3 | S4 |
|--------|-------|-------|-------|-------|-------|-------|-------|-------|-------|
| JEERA | 17775 | 16780 | 15805 | 15240 | 14820 | 14255 | 13835 | 12850 | 11865 |

OUTLOOK

Trend: Consolidate

Resistance: 15240, 15800

Support: 13830, 12850

Strategy: Sell on highs

JEERA WEEKLY



TURMERIC

WEEKLY PIVOT

| SCRIPT | R4 | R3 | R2 | R1 | P | S1 | S2 | S3 | S4 |
|----------|------|------|------|------|------|------|------|------|------|
| TURMERIC | 9151 | 8533 | 7915 | 7638 | 7297 | 7020 | 6679 | 6061 | 5443 |

OUTLOOK

Trend: Consolidate

Resistance: 7630, 7910

Support: 7020, 6670

Strategy: Sell on highs

TURMERIC WEEKLY



Disclaimer

The information and views in this report, our website & all the service we provide are believed to be reliable, but we do not accept any responsibility (or liability) for errors of fact or opinion. Users have the right to choose the product/s that suits them the most.

Sincere efforts have been made to present the right investment perspective. The information contained herein is based on analysis and up on sources that we consider reliable.

[This material is for personal information and based upon it & takes no responsibility](#)

The information given herein should be treated as only factor, while making investment decision. The report does not provide individually tailor-made investment advice. Money CapitalHeight Research investment advisors Pvt. Ltd. recommends that investors independently evaluate particular investments and strategies, and encourages investors to seek the advice of a financial adviser. Money CapitalHeight Research Pvt. Ltd. shall not be responsible for any transaction conducted based on the information given in this report, which is in violation of rules and regulations of NCDEX.

The commodity price projections shown are not necessarily indicative of future price performance. The information herein, together with all estimates and forecasts, can change without notice. Analyst or any person related to Money CapitalHeight Research investment advisors Pvt. Ltd. might be holding positions in the commodity recommended. It is understood that anyone who is browsing through the site has done so at his free will and does not read any views expressed as a recommendation for which either the site or its owners or anyone can be held responsible for. Any surfing and reading of the information is the acceptance of this disclaimer.

All Rights Reserved.

[Investment in Commodity and equity market has its own risks.](#)

We, however, do not vouch for the accuracy or the completeness thereof. [we are not responsible for any loss incurred whatsoever for any financial profits or loss which may arise from the recommendations above.](#) Money CapitalHeight Research investment advisors Pvt. Ltd. does not purport to be an invitation or an offer to buy or sell any financial instrument. [Our Clients \(Paid Or Unpaid\), Any third party or anyone else have no rights to forward or share our calls or SMS or Report or Any Information Provided by us to/with anyone which is received directly or indirectly by them. If found so then Serious Legal Actions can be taken.](#)