

Daily Newsletter-Equity

12/08/2015




CapitalHEIGHT
When Money Matters

www.capitalheight.com

MARKET WRAP

- ▶ Indian markets ended negative note. Nifty and Sensex up by 0.84% and 0.74%.
- ▶ Asia Pacific traded down Hang Seng down by 0.09% and Kospi down by 0.83%
- ▶ Wall St. Flat.USD ISM Manufacturing PMI down to 52.7. Dow fut. up 87 pts.

Indian broad indices showed bearish movement and closed on negative note. On sectorial front Infra, Realty, Service and Pharma were down while IT Sector up by 1.19%. Sensex was down by 235 points at 27866 & Nifty went down by 63 points to settle at 8462 level. European markets trade down.

Stock Recommendation



Capital Height's

Stock recommendation for 12/8/2015 is Chennai Petro. In today's trading session it was up by 17.70%. Its long term trend is up. On daily chart MACD & RSI has given buying confirmation. On daily chart its short term support level is 180. All the

indicators are suggesting that one can go for long position in this stock above 250 levels. The stock may test level of 260-270 in coming days.

Our recommendation on Chennai is **long** above 250 levels for target of 260-270.

MARKET PERFORMANCE

Sectorial Indices

INDEX	P. CLOSE	OPEN	HIGH	LOW	LAST	% CHANGE
CNX Nifty	8525.60	8548.45	8556.25	8441.30	8462.35	-0.74
CNX Nifty Junior	21524.50	21613.70	21617.60	21234.55	21393.60	-0.61
India VIX	15.47	15.47	16.09	13.55	15.89	2.76
CNX 100	8686.25	8711.65	8711.65	8596.35	8623.70	-0.72
CNX 500	7157.55	7179.20	7179.20	7079.15	7101.10	-0.79
CNX Midcap	14100.75	14154.30	14165.80	13919.60	14007.75	-0.66
Nifty Midcap 50	3508.60	3515.55	3516.65	3427.85	3455.00	-1.53
Bank Nifty	18875.00	18918.55	18918.55	18555.50	18616.90	-1.37
CNX Energy	8537.25	8566.40	8566.40	8444.00	8475.10	-0.73
CNX FMCG	20789.55	20809.15	20809.15	20583.10	20663.10	-0.61
CNX IT	11573.90	11637.25	11740.85	11605.90	11711.15	1.19
CNX Media	2492.95	2483.70	2513.00	2474.85	2499.25	0.25
CNX Metal	2109.80	2116.80	2116.80	2030.05	2035.40	-3.53
CNX MNC	10555.60	10583.10	10584.45	10415.60	10479.20	-0.72
CNX Pharma	12638.60	12691.40	12691.40	12570.40	12636.90	-0.01
CNX PSE	3477.90	3492.25	3492.25	3420.00	3425.45	-1.51
CNX PSU Bank	3576.30	3605.30	3637.60	3430.65	3442.95	-3.73
CNX Realty	183.65	184.20	185.35	180.35	181.55	-1.14

Index PE

Index PE	11 Aug 2015
Nifty	23.38
Sensex	22.45

Nifty Stats

Market Breadth	NSE	BSE
Advance	13	956
Decline	37	1934
Same	00	99

Macro Economic Data

Economic Data	Current	Previous
Monthly Inflation (m-o-m)	5.20%	4.38%
IIP Growth (m-o-m)	5.00%	2.60%
Repo Rate	7.25%	7.50%
Reserve Repo Rate	7.00%	7.00%
CRR	4.00%	4.00%
GDP Growth (Q-o-Q)	7.50%	5.30%

Index Movers (Pulling Up/Down)

Company Name	Contribution/Up	Company Name	Contribution/Down
Infosys	12.74	Larsen	-4.63
TCS	5.32	HDFC	-6.60
Bosch	4.89	Tata Motors	-11.09
Tech Mahindra	1.71	ICICI Bank	-12.03
Zee Entertain	1.41	SBI	-13.39

Nifty Gainers/ Losers

Symbol	Close Price	% Change	Symbol	Close Price	% Change
INFY	1115.00	2.67	TATASTEEL	247.30	-5.30
TECHM	541.90	2.06	SBIN	267.90	-5.25
BOSCHLTD	26555.00	2.03	TATAMOTORS	367.85	-4.63
ZEEL	416.00	1.56	HINDALCO	103.25	-4.22
TCS	2600.80	1.12	COALINDIA	392.70	-3.74

52 Week High/ Low

Symbol	Close Price	% Change	Symbol	Close Price	% Change
AARTIIND	439.95	-1.8	ADI	183.90	-5.98
ADANITRANS	37.30	3.47	ALMONDZ	8.50	-6.08
AJANTPHARM	1713.00	4.1	BIRLACOT	0.10	100
ALICON	386.00	3.99	COROMANDEL	220.30	-3.14
AUTOLITIND	67.40	13.37	FARMAXIND	0.15	-25

Most Active Securities

Symbol	Close Price	% Change
SBIN	267.90	-5.25
SYNGENE	311.00	5.42
CHENNPETRO	244.90	19.41
INFY	1115.00	2.67
TATAMOTORS	367.85	-4.63

Asian Markets

Name	Open	High	Low	Current Value	Change	% Chg
Nikkei 225	20920.60	20946.93	20582.01	20720.75	-87.94	-0.42
Hang Seng	24694.78	24924.07	24420.71	24498.21	-22.91	-0.09
Taiwan Weighted	8542.13	8586.22	8393.08	8394.14	-72.7	-0.87
KOSPI	2020.15	2021.81	1986.46	1986.65	-16.52	-0.83
Jakarta Composite	4763.63	4771.72	4619.29	4622.59	-126.36	-2.73

DERIVATIVE CORNER

Most Active Call Options

Symbol	Expiry Date	Option type	Strike price	LTP	Traded volume (Contracts)	Traded value (Lakhs)	Open Interest
NIFTY	27-Aug-15	CE	8600	56.1	8,43,476	18,26,062.28	40,94,175
NIFTY	27-Aug-15	CE	8700	27.65	6,58,070	14,36,203.23	46,96,475
NIFTY	27-Aug-15	CE	8500	99.05	4,60,541	9,90,552.31	27,41,400
NIFTY	27-Aug-15	CE	8800	11.9	4,57,884	10,08,829.49	49,11,450
NIFTY	27-Aug-15	CE	8900	4.85	2,46,413	5,48,599.12	27,15,900

Most Active Put Options

Symbol	Expiry Date	Option type	Strike price	LTP	Traded volume (Contracts)	Traded value (Lakhs)	Open Interest
NIFTY	27-Aug-15	PE	8500	106	7,02,150	15,09,529.47	26,36,525
NIFTY	27-Aug-15	PE	8400	66.2	5,80,327	12,27,932.76	38,08,875
NIFTY	27-Aug-15	PE	8300	39.4	4,66,192	9,71,713.12	40,20,325
NIFTY	27-Aug-15	PE	8200	22.5	3,59,411	7,38,718.99	62,78,800
NIFTY	27-Aug-15	PE	8600	160.8	2,09,791	4,58,981.80	15,20,525

Securities in Ban (12-08-2015)

Securities In Ban		
AMTEKAUTO	IBREALEST	-
-	-	-

F&O Trade Statistics

Product	No Of Contracts	Turnover In Rs. (Cr)	Put Call Ratio
Index Futures	5,78,348	16062.57	-
Stock Futures	9,61,415	28353.66	-
Index Options	69,21,481	1,60,028.13	0.94
Stock Options	6,43,010	18879.62	0.55
F&O Total	91,04,256	2,23,324.18	0.9

FII Trading Activity (NSE & BSE) In Crores

CATEGORY	DATE	BUY VALUE	SELL VALUE	NET VALUE
FII	11-Aug-2015	3488.91	4225.72	736.81

DII Trading Activity (NSE & BSE) In Crores

CATEGORY	DATE	BUY VALUE	SELL VALUE	NET VALUE
DII	11-Aug-2015	1510.87	1380.13	130.74

Corporate Actions (12 Aug 2015)

EX-Dividend- BASF, Indo Borax, Mercator

Board Meeting (Purpose)

Ashok Leyland, Auro Labs, ADF Foods (Quarterly results)

TECHNICAL VIEW

NIFTY

DAILY PIVOT

SCRIPT	R4	R3	R2	R1	P	S1	S2	S3	S4
NIFTY	8818	8719	8620	8582	8521	8483	8422	8323	8224

OUTLOOK

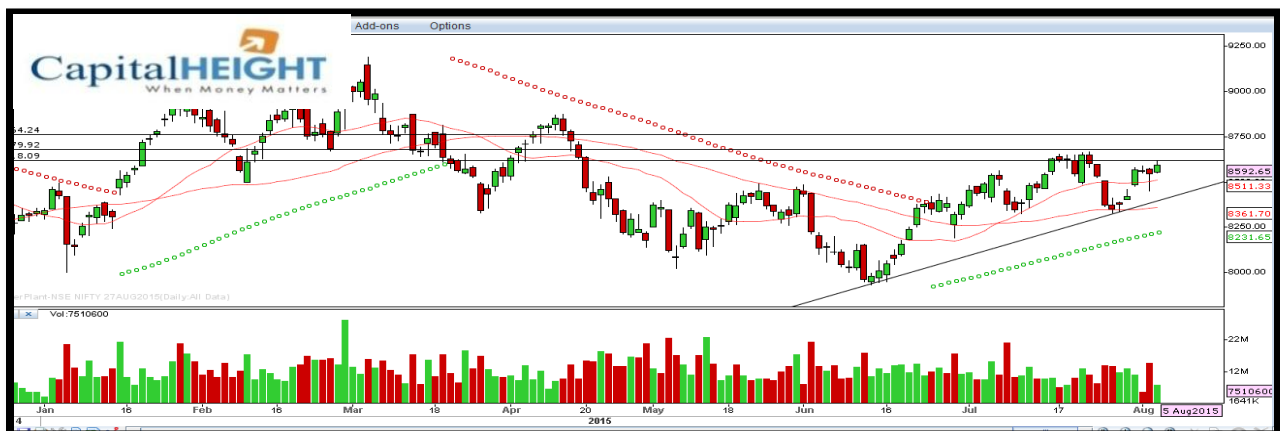
Trend: - Consolidate

Resistance: - 8580, 8620

Support: - 8480, 8420

Strategy: - Sell on high

NIFTY DAILY



BANK NIFTY

DAILY PIVOT

SCRIPT	R4	R3	R2	R1	P	S1	S2	S3	S4
BANK NIFTY	19969	19600	19231	19095	18862	18726	18493	18124	17755

OUTLOOK

Trend: - Consolidate

Resistance: - 19100, 19230

Support: - 18730, 18490

Strategy: - Buy on dips

BANK NIFTY DAILY



Disclaimer

The information and views in this report, our website & all the service we provide are believed to be reliable, but we do not accept any responsibility (or liability) for errors of fact or opinion. Users have the right to choose the product/s that suits them the most.

Sincere efforts have been made to present the right investment perspective. The information contained herein is based on analysis and up on sources that we consider reliable.

This material is for personal information and based upon it & takes no responsibility

The information given herein should be treated as only factor, while making investment decision. The report does not provide individually tailor-made investment advice. Money CapitalHeight Research investment advisors Pvt. Ltd. recommends that investors independently evaluate particular investments and strategies, and encourages investors to seek the advice of a financial adviser. Money CapitalHeight Research investment advisors Pvt. Ltd. shall not be responsible for any transaction conducted based on the information given in this report, which is in violation of rules and regulations of NSE and BSE.

The share price projections shown are not necessarily indicative of future price performance. The information herein, together with all estimates and forecasts, can change without notice. Analyst or any person related to Money CapitalHeight Research investment advisors Pvt. Ltd. might be holding positions in the stocks recommended. It is understood that anyone who is browsing through the site has done so at his free will and does not read any views expressed as a recommendation for which either the site or its owners or anyone can be held responsible for. Any surfing and reading of the information is the acceptance of this disclaimer.

All Rights Reserved.

Investment in Commodity and equity market has its own risks.

We, however, do not vouch for the accuracy or the completeness thereof. **we are not responsible for any loss incurred whatsoever for any financial profits or loss which may arise from the recommendations above.** Money CapitalHeight Research investment advisors Pvt. Ltd. does not purport to be an invitation or an offer to buy or sell any financial instrument. **Our Clients (Paid Or Unpaid), Any third party or anyone else have no rights to forward or share our calls or SMS or Report or Any Information Provided by us to/with anyone which is received directly or indirectly by them. If found so then Serious Legal Actions can be taken.**