

Daily Newsletter-Equity

14/08/2015




CapitalHEIGHT
When Money Matters

www.capitalheight.com

MARKET WRAP

- ▶ Indian markets ended positive note. Nifty and Sensex up by 0.14% and 0.08%.
- ▶ Asia Pacific traded up Hang Seng up by 0.43% and Kospi up by 0.40%
- ▶ Wall St. Flat.USD ISM Manufacturing PMI down to 52.7. Dow fut. up 195 pts.

Indian broad indices showed bearish movement and closed on negative note. On sectorial front Infra, Realty, IT and Metal were down while Pharma Sector up by 1.11%. Sensex was up by 37 points at 27549 & Nifty went up by 6 points to settle at 8355 level. European markets trade upside.

Stock Recommendation



Capital Height's

Stock recommendation for 12/8/2015 is Neclous. In today's trading session it was up by 13.31%. Its long term trend is up. On daily chart MACD & RSI has given buying confirmation. On daily chart its short term support level is 250. All the indicators are

suggesting that one can go for long position in this stock above 300 levels. The stock may test level of 310-315 in coming days.

Our recommendation on Neclous is **long** above 300 levels for target of 310-315.

MARKET PERFORMANCE

Sectorial Indices

INDEX	P. CLOSE	OPEN	HIGH	LOW	LAST	% CHANGE
CNX Nifty	8349.45	8384.45	8429.50	8339.75	8355.85	0.08
CNX Nifty Junior	20877.20	20997.50	21190.70	20756.90	20806.55	-0.34
India VIX	17.45	17.45	17.45	16.25	17.02	-2.45
CNX 100	8493.25	8531.05	8579.95	8478.45	8493.95	0.01
CNX 500	6986.45	7017.85	7059.15	6964.85	6976.60	-0.14
CNX Midcap	13684.90	13757.35	13859.45	13597.65	13636.95	-0.35
Nifty Midcap 50	3362.35	3384.30	3407.65	3326.60	3339.95	-0.67
Bank Nifty	18059.75	18211.50	18359.25	18080.50	18175.40	0.64
CNX Energy	8275.55	8301.65	8351.20	8226.90	8254.65	-0.25
CNX FMCG	20329.80	20392.75	20492.40	20231.25	20271.25	-0.29
CNX IT	12006.80	12029.50	12092.05	11916.30	11956.10	-0.42
CNX Media	2432.10	2437.05	2469.65	2413.30	2420.10	-0.49
CNX Metal	1947.55	1959.70	1969.25	1889.15	1893.60	-2.77
CNX MNC	10256.75	10303.45	10355.20	10207.25	10228.70	-0.27
CNX Pharma	12771.75	12832.85	12983.55	12832.85	12913.70	1.11
CNX PSE	3313.45	3319.70	3341.10	3297.85	3321.20	0.23
CNX PSU Bank	3310.35	3351.45	3400.80	3316.70	3331.15	0.63
CNX Realty	171.40	172.10	175.30	167.40	169.05	-1.37

Index PE

Index PE	13 Aug 2015
Nifty	23.16
Sensex	21.91

Nifty Stats

Market Breadth	NSE	BSE
Advance	28	964
Decline	22	1894
Same	00	87

Macro Economic Data

Economic Data	Current	Previous
Monthly Inflation (m-o-m)	5.20%	4.38%
IIP Growth (m-o-m)	5.00%	2.60%
Repo Rate	7.25%	7.50%
Reserve Repo Rate	7.00%	7.00%
CRR	4.00%	4.00%
GDP Growth (Q-o-Q)	7.50%	5.30%

Index Movers (Pulling Up/Down)

Company Name	Contribution/Up	Company Name	Contribution/Down
TCS	10.34	Sun Pharma	-6.05
Bosch	8.45	HDFC Bank	-6.96
Reliance	8.29	Axis Bank	-7.86
Bharti Airtel	8.12	M&M	-9.13
Idea Cellular	7.8	Infosys	-12.94

Nifty Gainers/ Losers

Symbol	Close Price	% Change	Symbol	Close Price	% Change
M&M	1346.00	3.59	VEDL	104.45	-8.26
CIPLA	729.60	3.10	TATASTEEL	234.00	-6.04
TATAPOWER	69.40	2.74	HINDALCO	91.00	-5.11
SUNPHARMA	888.00	2.52	BOSCHLTD	24880.00	-2.40
LUPIN	1765.00	2.49	NMDC	97.50	-2.35

52 Week High/ Low

Symbol	Close Price	% Change	Symbol	Close Price	% Change
ALLSEC	49.00	1.45	20MICRONS	27.90	-1.06
ASHOKLEY	88.85	0.85	BIRLACOT	0.05	0
BRITANNIA	3398.85	2.35	CAIRN	153.85	-0.71
DALMIABHA	652.00	-2.66	COROMANDEL	213.50	-2.64
DIVISLAB	2184.00	0.19	DELTACORP	65.45	-4.38

Most Active Securities

Symbol	Close Price	% Change
INFY	1155.35	0.96
SBIN	260.40	1.58
LT	1770.00	0.43
TATAMOTORS	350.60	-1.30
ICICIBANK	292.95	0.45

Asian Markets

Name	Open	High	Low	Current Value	Change	% Chg
Nikkei 225	20392.54	20633.91	20306.98	20595.55	202.78	0.98
Hang Seng	23935.48	24133.87	23860.82	24018.8	102.78	0.43
Taiwan Weighted	8284.96	8348.39	8271.69	8311.74	28.36	0.34
KOSPI	1975.47	1990.70	1966.02	1983.46	7.99	0.4
Jakarta Composite	4481.27	4600.55	4481.27	4584.25	104.76	2.29

DERIVATIVE CORNER

Most Active Call Options

Symbol	Expiry Date	Option type	Strike price	LTP	Traded volume (Contracts)	Traded value (Lakhs)	Open Interest
NIFTY	27-Aug-15	CE	8500	58.6	8,97,625	19,21,429.15	39,84,850
NIFTY	27-Aug-15	CE	8600	29.25	7,14,695	15,42,281.44	51,99,500
NIFTY	27-Aug-15	CE	8400	103.3	6,05,729	12,88,194.78	32,36,050
NIFTY	27-Aug-15	CE	8700	13	5,68,543	12,38,607.88	51,31,850
NIFTY	27-Aug-15	CE	8800	5	2,96,580	6,52,898.63	45,44,150

Most Active Put Options

Symbol	Expiry Date	Option type	Strike price	LTP	Traded volume (Contracts)	Traded value (Lakhs)	Open Interest
NIFTY	27-Aug-15	PE	8300	64.05	7,98,767	16,70,623.18	50,97,425
NIFTY	27-Aug-15	PE	8400	102.1	7,62,697	16,21,251.67	35,25,400
NIFTY	27-Aug-15	PE	8200	38.2	5,33,607	10,99,249.10	58,62,550
NIFTY	27-Aug-15	PE	8100	22.3	3,68,610	7,48,579.64	22,12,425
NIFTY	27-Aug-15	PE	8000	12.65	3,12,613	6,26,277.94	31,13,200

Securities in Ban (13-08-2015)

Securities In Ban		
AMTEKAUTO	IBREALEST	-
-	-	-

F&O Trade Statistics

Product	No Of Contracts	Turnover In Rs. (Cr)	Put Call Ratio
Index Futures	6,22,334	16513.23	-
Stock Futures	9,87,965	27333.99	-
Index Options	81,53,389	1,86,981.80	0.92
Stock Options	6,03,638	17076.54	0.52
F&O Total	1,03,67,326	2,47,905.55	0.89

FII Trading Activity (NSE & BSE) In Crores

CATEGORY	DATE	BUY VALUE	SELL VALUE	NET VALUE
FII	13-Aug-2015	3854.34	4480.24	325.90

DII Trading Activity (NSE & BSE) In Crores

CATEGORY	DATE	BUY VALUE	SELL VALUE	NET VALUE
DII	13-Aug-2015	2056.47	1510.61	545.86

Corporate Actions (14Aug 2015)

EX-Dividend- KPR Mill, Ultratech Cement, Mysore Petro

Board Meeting (Purpose)

Aviva Ind, Birla Corp, Bombay Cycle (Quarterly results)

TECHNICAL VIEW

NIFTY

DAILY PIVOT

SCRIPT	R4	R3	R2	R1	P	S1	S2	S3	S4
NIFTY	8653	8565	8477	8421	8389	8333	8301	8213	8125

OUTLOOK

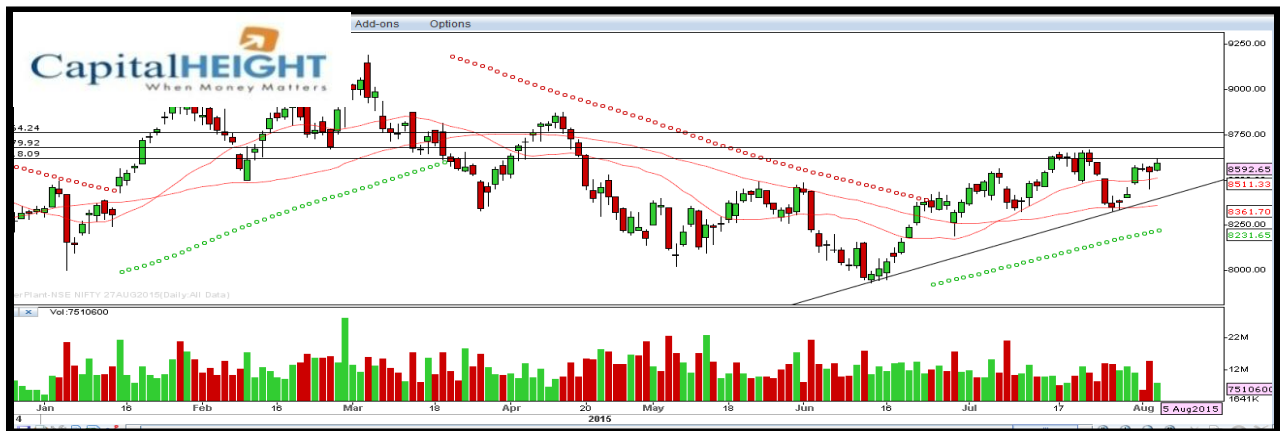
Trend: - Consolidate

Resistance: - 8420, 8480

Support: - 8340, 8300

Strategy: - Sell on high

NIFTY DAILY



BANK NIFTY

DAILY PIVOT

SCRIPT	R4	R3	R2	R1	P	S1	S2	S3	S4
BANK NIFTY	19051	18776	18501	18318	18226	18043	17951	17676	17401

OUTLOOK

Trend: - Consolidate

Resistance: - 18320, 18500

Support: - 18040, 17950

Strategy: - Sell on high

BANK NIFTY DAILY



Disclaimer

The information and views in this report, our website & all the service we provide are believed to be reliable, but we do not accept any responsibility (or liability) for errors of fact or opinion. Users have the right to choose the product/s that suits them the most.

Sincere efforts have been made to present the right investment perspective. The information contained herein is based on analysis and up on sources that we consider reliable.

This material is for personal information and based upon it & takes no responsibility

The information given herein should be treated as only factor, while making investment decision. The report does not provide individually tailor-made investment advice. Money CapitalHeight Research investment advisors Pvt. Ltd. recommends that investors independently evaluate particular investments and strategies, and encourages investors to seek the advice of a financial adviser. Money CapitalHeight Research investment advisors Pvt. Ltd. shall not be responsible for any transaction conducted based on the information given in this report, which is in violation of rules and regulations of NSE and BSE.

The share price projections shown are not necessarily indicative of future price performance. The information herein, together with all estimates and forecasts, can change without notice. Analyst or any person related to Money CapitalHeight Research investment advisors Pvt. Ltd. might be holding positions in the stocks recommended. It is understood that anyone who is browsing through the site has done so at his free will and does not read any views expressed as a recommendation for which either the site or its owners or anyone can be held responsible for. Any surfing and reading of the information is the acceptance of this disclaimer.

All Rights Reserved.

Investment in Commodity and equity market has its own risks.

We, however, do not vouch for the accuracy or the completeness thereof. **we are not responsible for any loss incurred whatsoever for any financial profits or loss which may arise from the recommendations above.** Money CapitalHeight Research investment advisors Pvt. Ltd. does not purport to be an invitation or an offer to buy or sell any financial instrument. **Our Clients (Paid Or Unpaid), Any third party or anyone else have no rights to forward or share our calls or SMS or Report or Any Information Provided by us to/with anyone which is received directly or indirectly by them. If found so then Serious Legal Actions can be taken.**