

# Daily Newsletter-Equity

18/08/2015



  
**CapitalHEIGHT**  
When Money Matters

[www.capitalheight.com](http://www.capitalheight.com)

# MARKET WRAP

- ▶ Indian mkts. ended on weak note. Nifty and Sensex down by 0.48% and 0.67%.
- ▶ Asia Pacific traded mixed Hang Seng down by 0.74% and Kospi up by 0.76%
- ▶ Wall St. Flat.USD ISM Manufacturing PMI down to 52.7. Dow fut. up by 95 pts.

Indian indices remained weak and closed on negative note. On sectorial front Realty, IT and Energy were highly down while Banking and Metal was up during the session. Sensex was down by 189 points at 27878 & Nifty went down by 41 points to settle at 8477 level. European markets trade downside.

## Stock Recommendation



### Capital Height's

Stock recommendation for 18/8/2015 is Amaraja battery. In today's trading session it was up by 8.55%. Its long term trend is up. On daily chart MACD & RSI has given buying confirmation. On daily chart its short term support level is 1015. All the

indicators are suggesting that one can go for long position in this stock above 1058 levels. The stock may test level of 1080-1200 in coming days.

Our recommendation on Amaraja battery is **long** above 1058 levels for target of 1080.

# MARKET PERFORMANCE

## Sectorial Indices

INDEX	P. CLOSE	OPEN	HIGH	LOW	LAST	% CHANGE
CNX Nifty	8518.55	8530.50	8530.60	8428.05	8477.30	-0.48
CNX Nifty Junior	21250.80	21310.95	21404.75	21107.65	21364.50	0.54
India VIX	16.02	16.02	17.20	15.29	16.46	2.76
CNX 100	8661.95	8676.15	8678.25	8576.75	8634.50	-0.32
CNX 500	7112.50	7125.50	7125.50	7048.45	7098.70	-0.19
CNX Midcap	13917.10	13961.85	14005.80	13813.35	13977.35	0.43
Nifty Midcap 50	3418.20	3430.60	3458.45	3393.65	3442.10	0.70
Bank Nifty	18723.60	18763.05	18896.45	18580.65	18822.05	0.53
CNX Energy	8409.65	8409.00	8409.00	8273.80	8299.20	-1.31
CNX FMCG	20345.30	20411.20	20430.95	20238.90	20321.20	-0.12
CNX IT	12048.45	12057.65	12058.05	11920.25	12001.75	-0.39
CNX Media	2500.55	2489.20	2499.85	2445.30	2474.85	-1.03
CNX Metal	1920.60	1925.55	1947.55	1893.65	1942.95	1.16
CNX MNC	10345.80	10373.80	10373.80	10240.85	10306.65	-0.38
CNX Pharma	13137.25	13200.45	13200.45	12959.70	13089.55	-0.36
CNX PSE	3335.95	3343.65	3343.70	3302.40	3326.90	-0.27
CNX PSU Bank	3483.70	3547.95	3715.65	3547.95	3699.20	6.19
CNX Realty	183.30	182.00	182.15	177.90	180.40	-1.58

## Index PE

Index PE	17Aug 2015
Nifty	23.16
Sensex	21.91

## Nifty Stats

Market Breadth	NSE	BSE
Advance	16	1423
Decline	34	1439
Same	00	115

## Macro Economic Data

Economic Data	Current	Previous
Monthly Inflation (m-o-m)	5.20%	4.38%
IIP Growth (m-o-m)	5.00%	2.60%
Repo Rate	7.25%	7.50%
Reserve Repo Rate	7.00%	7.00%
CRR	4.00%	4.00%
GDP Growth (Q-o-Q)	7.50%	5.30%

## Index Movers (Pulling Up/Down)

Company Name	Contribution/Up	Company Name	Contribution/Down
SBI	10.2	Larsen	-4.27
Bank of Baroda	7.55	Cipla	-5.07
Sun Pharma	2.18	HDFC Bank	-5.51
Tata Steel	1.66	Reliance	-7.70
PNB	1.57	HDFC	-8.54

## Nifty Gainers/ Losers

Symbol	Close Price	% Change	Symbol	Close Price	% Change
BANKBARODA	212.05	14.99	CIPLA	702.20	-5.06
TATASTEEL	247.50	4.17	ZEEL	408.10	-2.79
SBIN	279.20	3.99	HINDALCO	90.70	-2.63
PNB	172.20	3.58	HEROMOTOCO	2647.95	-2.38
GAIL	345.00	2.33	ONGC	264.00	-2.37

## 52 Week High/ Low

Symbol	Close Price	% Change	Symbol	Close Price	% Change
ADANITRANS	40.80	2.13	20MICRONS	27.25	-1.8
AMARAJABAT	1063.05	9.15	AFTEK	2.85	-5
ASHOKLEY	91.75	3.03	AMTEKAUTO	130.50	-13.09
BAJAJHLDNG	1650.00	0.28	ANDHRACEMT	5.55	-1.77
BHARATGEAR	105.00	10.76	ATLANTA	44.00	-8.14

## Most Active Securities

Symbol	Close Price	% Change
ADANIPTS	363.35	8.56
GLENMARK	1132.40	6.90
AXISBANK	571.75	0.74
SUNPHARMA	899.85	2.37
SBIN	268.50	3.55

## Asian Markets

Name	Open	High	Low	Current Value	Change	% Chg
Nikkei 225	20518.36	20605.46	20484.67	20519.45	-76.1	-0.37
Hang Seng	24055.02	24126.30	23957.36	23991.03	-27.77	-0.12
Taiwan Weighted	8315.14	8343.98	8283.35	8305.64	-6.1	-0.07
KOSPI	1975.47	1990.70	1966.02	1983.46	7.99	0.4
Jakarta Composite	4587.51	4594.57	4559.86	4585.39	1.14	0.02

## DERIVATIVE CORNER

### Most Active Call Options

Symbol	Expiry Date	Option type	Strike price	LTP	Traded volume (Contracts)	Traded value (Lakhs)	Open Interest
NIFTY	27-Aug-15	CE	8600	63.5	9,31,200	20,13,456.94	50,68,475
NIFTY	27-Aug-15	CE	8500	115.9	8,93,071	19,17,867.74	32,51,375
NIFTY	27-Aug-15	CE	8700	29.3	7,34,731	16,02,088.29	49,73,325
NIFTY	27-Aug-15	CE	8800	11.15	4,35,236	9,58,395.11	45,70,925
NIFTY	27-Aug-15	CE	8400	185.75	4,06,134	8,67,345.86	20,19,225

### Most Active Put Options

Symbol	Expiry Date	Option type	Strike price	LTP	Traded volume (Contracts)	Traded value (Lakhs)	Open Interest
NIFTY	27-Aug-15	PE	8400	43	9,83,506	20,80,252.88	48,18,325
NIFTY	27-Aug-15	PE	8300	24.3	8,33,205	17,36,186.75	61,21,975
NIFTY	27-Aug-15	PE	8200	13.95	6,04,046	12,41,344.73	66,75,575
NIFTY	27-Aug-15	PE	8500	72.3	5,46,499	11,73,299.20	33,69,925
NIFTY	27-Aug-15	PE	8100	7.95	3,46,205	7,02,126.24	19,05,350

### Securities in Ban (18-08-2015)

Securities In Ban		
AMTEKAUTO	-	-
-	-	-

## F&O Trade Statistics

Product	No Of Contracts	Turnover In Rs. ( Cr)	Put Call Ratio
Index Futures	6,22,334	16513.23	-
Stock Futures	9,87,965	27333.99	-
Index Options	81,53,389	1,86,981.80	0.92
Stock Options	6,03,638	17076.54	0.52
<b>F&amp;O Total</b>	<b>1,03,67,326</b>	<b>2,47,905.55</b>	<b>0.89</b>

## FII Trading Activity (NSE & BSE) In Crores

CATEGORY	DATE	BUY VALUE	SELL VALUE	NET VALUE
FII	17-Aug-2015	3507	3365	142

## DII Trading Activity (NSE & BSE) In Crores

CATEGORY	DATE	BUY VALUE	SELL VALUE	NET VALUE
DII	17-Aug-2015	1471	1287	183

## Corporate Actions ( 18Aug 2015)

EX-Dividend- Nil

Board Meeting (Purpose)

Nil

# TECHNICAL VIEW

## NIFTY

### DAILY PIVOT

SCRIPT	R4	R3	R2	R1	P	S1	S2	S3	S4
NIFTY	8898	8747	8596	8488	8445	8337	8294	8143	7992

### OUTLOOK

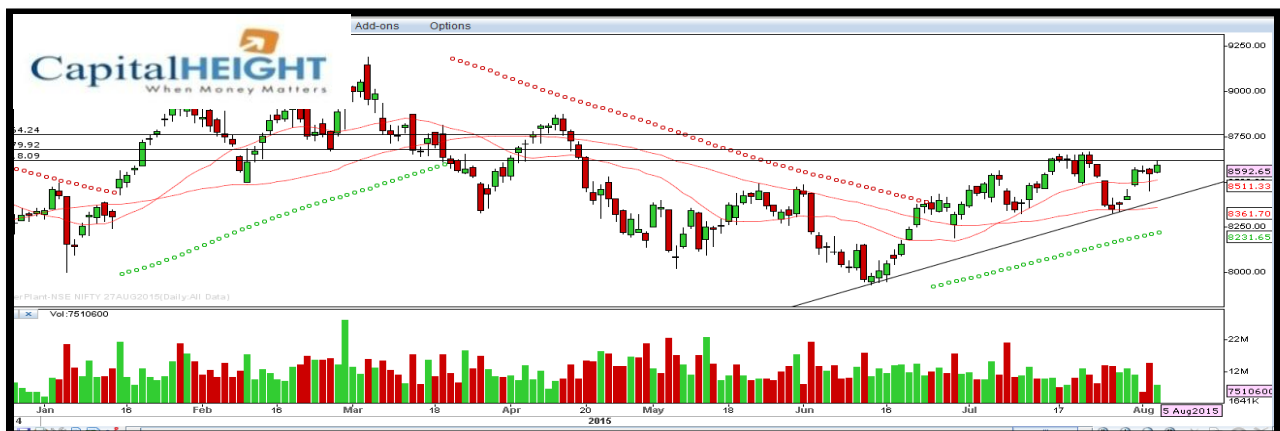
**Trend: - Consolidate**

**Resistance: - 8480, 8590**

**Support: - 8340, 8290**

**Strategy: - Sell on high**

## NIFTY DAILY





## BANK NIFTY

### DAILY PIVOT

SCRIPT	R4	R3	R2	R1	P	S1	S2	S3	S4
BANK NIFTY	20289	19671	19053	18648	18435	18030	17817	17199	16581

### OUTLOOK

**Trend: - Consolidate**

**Resistance: - 18650, 19060**

**Support: - 18030, 17820**

**Strategy: - Sell on high**

### BANK NIFTY DAILY



# Disclaimer

The information and views in this report, our website & all the service we provide are believed to be reliable, but we do not accept any responsibility (or liability) for errors of fact or opinion. Users have the right to choose the product/s that suits them the most.

Sincere efforts have been made to present the right investment perspective. The information contained herein is based on analysis and up on sources that we consider reliable.

**This material is for personal information and based upon it & takes no responsibility**

The information given herein should be treated as only factor, while making investment decision. The report does not provide individually tailor-made investment advice. Money CapitalHeight Research investment advisors Pvt. Ltd. recommends that investors independently evaluate particular investments and strategies, and encourages investors to seek the advice of a financial adviser. Money CapitalHeight Research investment advisors Pvt. Ltd. shall not be responsible for any transaction conducted based on the information given in this report, which is in violation of rules and regulations of NSE and BSE.

The share price projections shown are not necessarily indicative of future price performance. The information herein, together with all estimates and forecasts, can change without notice. Analyst or any person related to Money CapitalHeight Research investment advisors Pvt. Ltd. might be holding positions in the stocks recommended. It is understood that anyone who is browsing through the site has done so at his free will and does not read any views expressed as a recommendation for which either the site or its owners or anyone can be held responsible for. Any surfing and reading of the information is the acceptance of this disclaimer.

All Rights Reserved.

**Investment in Commodity and equity market has its own risks.**

We, however, do not vouch for the accuracy or the completeness thereof. **we are not responsible for any loss incurred whatsoever for any financial profits or loss which may arise from the recommendations above.** Money CapitalHeight Research investment advisors Pvt. Ltd. does not purport to be an invitation or an offer to buy or sell any financial instrument. **Our Clients (Paid Or Unpaid), Any third party or anyone else have no rights to forward or share our calls or SMS or Report or Any Information Provided by us to/with anyone which is received directly or indirectly by them. If found so then Serious Legal Actions can be taken.**