

# Daily Newsletter-Equity

19/08/2015



  
**CapitalHEIGHT**  
When Money Matters

[www.capitalheight.com](http://www.capitalheight.com)

# MARKET WRAP

- ▶ Indian mkts. ended on weak note. Nifty and Sensex down by 0.43% and 0.17%.
- ▶ Asia Pacific traded down Hang Seng down by 1.45% and Kospi up by 0.63%
- ▶ Wall St. Flat.USD ISM Manufacturing PMI down to 52.7. Dow fut. up by 5 pts.

Indian indices remained weak and closed on negative note. On sectorial front Realty, Pharma, FMCG and Energy were highly down while IT and Auto was up during the session. Sensex was down by 46 points at 27831 & Nifty went down by 10 points to settle at 8466 level. European markets trade downside.

## Stock Recommendation



### Capital Height's

Stock recommendation for 19/8/2015 is Auropharma. In today's trading session it was up by 1.01%. Its long term trend is up. On daily chart MACD & RSI has given buying confirmation. On daily chart its short term support level is 779. All the

indicators are suggesting that one can go for long position in this stock above 800 levels. The stock may test level of 830-850 in coming days.

Our recommendation on Auropharma is **long** above 800 levels for target of 830-850

# MARKET PERFORMANCE

## Sectorial Indices

INDEX	P. CLOSE	OPEN	HIGH	LOW	LAST	% CHANGE
CNX Nifty	8477.30	8505.85	8525.75	8433.60	8466.55	-0.13
CNX Nifty Junior	21364.50	21492.70	21555.40	21336.35	21465.60	0.47
India VIX	16.46	16.46	16.66	15.10	16.36	-0.62
CNX 100	8634.50	8667.30	8687.85	8596.15	8632.10	-0.03
CNX 500	7098.70	7126.35	7147.95	7076.50	7106.40	0.11
CNX Midcap	13977.35	14049.70	14106.35	13963.50	14048.75	0.51
Nifty Midcap 50	3442.10	3456.55	3479.25	3430.75	3463.35	0.62
Bank Nifty	18822.05	18862.15	18874.10	18595.50	18780.85	-0.22
CNX Energy	8299.20	8344.65	8344.65	8243.45	8253.00	-0.56
CNX FMCG	20321.20	20374.05	20449.00	20186.65	20283.75	-0.18
CNX IT	12001.75	12068.35	12250.10	12060.15	12159.40	1.31
CNX Media	2474.85	2476.10	2497.95	2452.25	2469.50	-0.22
CNX Metal	1942.95	1950.25	1964.85	1892.75	1909.10	-1.74
CNX MNC	10306.65	10330.15	10367.65	10275.90	10357.50	0.49
CNX Pharma	13089.55	13139.60	13168.35	12958.20	12980.10	-0.84
CNX PSE	3326.90	3344.10	3346.65	3293.95	3298.25	-0.86
CNX PSU Bank	3699.20	3710.15	3782.80	3644.60	3728.50	0.79
CNX Realty	180.40	181.10	181.90	177.10	179.70	-0.39

## Index PE

Index PE	18Aug 2015
Nifty	23.45
Sensex	22.04

## Nifty Stats

Market Breadth	NSE	BSE
Advance	19	1617
Decline	31	1254
Same	00	113

## Macro Economic Data

Economic Data	Current	Previous
Monthly Inflation (m-o-m)	5.20%	4.38%
IIP Growth (m-o-m)	5.00%	2.60%
Repo Rate	7.25%	7.50%
Reserve Repo Rate	7.00%	7.00%
CRR	4.00%	4.00%
GDP Growth (Q-o-Q)	7.50%	5.30%

## Index Movers (Pulling Up/Down)

Company Name	Contribution/Up	Company Name	Contribution/Down
Infosys	16.35	Reliance	-4.43
TCS	12.44	Kotak Mahindra	-5.07
SBI	6.49	Sun Pharma	-5.97
Larsen	6.25	Tata Motors	-6.72
Maruti Suzuki	4.32	HDFC	-8.03

## Nifty Gainers/ Losers

Symbol	Close Price	% Change	Symbol	Close Price	% Change
BPCL	898.50	3.85	GAIL	329.30	-4.56
TATASTEEL	252.40	2.29	COALINDIA	363.60	-4.28
TCS	2745.95	2.28	NMDC	95.35	-3.74
MARUTI	4647.90	2.16	CAIRN	150.00	-2.76
TECHM	563.45	2.09	CIPLA	685.00	-2.58

## 52 Week High/ Low

Symbol	Close Price	% Change	Symbol	Close Price	% Change
3MINDIA	10900.00	4.81	AMTEKAUTO	128.40	-3.64
ADANIPTS	362.90	1.28	ANDHRACEMT	5.40	-1.82
AKSHOPTFBR	21.50	8.31	BIRLACOT	0.05	-50
APARINDS	485.00	6.61	CLNINDIA	790.00	-0.97
ASHOKLEY	97.05	5.89	ESL	3.00	-7.69

## Most Active Securities

Symbol	Close Price	% Change
TATAELXSI	2141.00	20.00
SBIN	284.75	1.79
ASHOKLEY	97.05	5.89
CIPLA	685.00	-2.58
BANKBARODA	212.60	-0.09

## Asian Markets

Name	Open	High	Low	Current Value	Change	% Chg
Nikkei 225	20640.59	20663.18	20545.25	20554.47	-65.79	-0.32
Hang Seng	23956.86	24024.37	23464.35	23474.97	-339.68	-1.45
Taiwan Weighted	8237.08	8277.22	8166.77	8177.22	-36.2	-0.44
KOSPI	1977.61	1979.33	1954.35	1956.26	-12.26	-0.63
Jakarta Composite	4572.35	4579.08	4505.21	4510.48	-74.91	-1.66

## DERIVATIVE CORNER

### Most Active Call Options

Symbol	Expiry Date	Option type	Strike price	LTP	Traded volume (Contracts)	Traded value (Lakhs)	Open Interest
NIFTY	27-Aug-15	CE	8500	69.85	9,87,106	21,15,612.47	38,73,150
NIFTY	27-Aug-15	CE	8600	31.25	9,70,227	20,94,378.09	50,02,950
NIFTY	27-Aug-15	CE	8700	12	7,79,758	16,98,661.87	44,62,150
NIFTY	27-Aug-15	CE	8800	3.8	4,03,289	8,87,696.56	45,03,275
NIFTY	27-Aug-15	CE	8900	1.6	2,29,236	5,10,150.39	23,56,800

### Most Active Put Options

Symbol	Expiry Date	Option type	Strike price	LTP	Traded volume (Contracts)	Traded value (Lakhs)	Open Interest
NIFTY	27-Aug-15	PE	8400	49.7	8,32,051	17,57,934.47	42,12,050
NIFTY	27-Aug-15	PE	8500	90	7,47,108	16,04,231.39	25,34,025
NIFTY	27-Aug-15	PE	8300	25.75	6,97,069	14,51,144.30	58,88,725
NIFTY	27-Aug-15	PE	8200	13.3	4,69,456	9,64,073.67	62,67,725
NIFTY	27-Aug-15	PE	8100	6.3	2,04,584	4,14,644.20	20,94,475

### Securities in Ban (19-08-2015)

Securities In Ban		
AMTEKAUTO	INDIACEM	-
-	-	-

## F&O Trade Statistics

Product	No Of Contracts	Turnover In Rs. ( Cr)	Put Call Ratio
Index Futures	6,22,334	16513.23	-
Stock Futures	9,87,965	27333.99	-
Index Options	81,53,389	1,86,981.80	0.92
Stock Options	6,03,638	17076.54	0.52
<b>F&amp;O Total</b>	<b>1,03,67,326</b>	<b>2,47,905.55</b>	<b>0.89</b>

## FII Trading Activity (NSE & BSE) In Crores

CATEGORY	DATE	BUY VALUE	SELL VALUE	NET VALUE
FII	18-Aug-2015	3507.74	3365.4	<b>142.34</b>

## DII Trading Activity (NSE & BSE) In Crores

CATEGORY	DATE	BUY VALUE	SELL VALUE	NET VALUE
DII	18-Aug-2015	1471.16	1287.44	<b>183.72</b>

## Corporate Actions ( 19Aug 2015)

**EX-Dividend-** Natural Capsule, Kirloskar Ind, Precision Wires

**Board Meeting (Purpose)**

Mysore Papers, India Home Loan, Aanchal Ispat

# TECHNICAL VIEW

## NIFTY

### DAILY PIVOT

SCRIPT	R4	R3	R2	R1	P	S1	S2	S3	S4
NIFTY	8767	8673	8579	8533	8485	8439	8391	8297	8203

### OUTLOOK

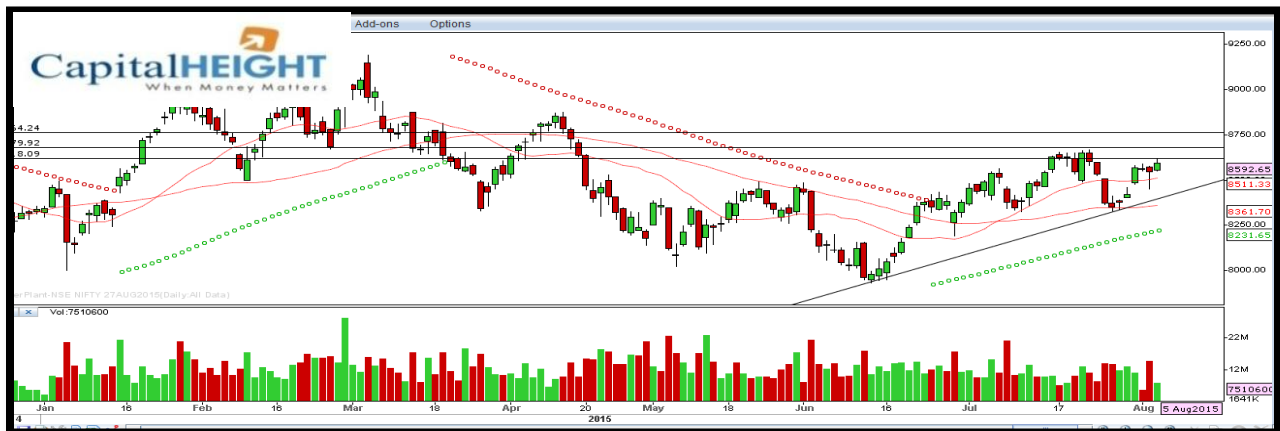
**Trend: - Consolidate**

**Resistance: - 8530, 8580**

**Support: - 8440, 8390**

**Strategy: - Sell on high**

## NIFTY DAILY





## BANK NIFTY

### DAILY PIVOT

SCRIPT	R4	R3	R2	R1	P	S1	S2	S3	S4
BANK NIFTY	19626	19345	19064	18953	18783	18672	18502	18221	17940

### OUTLOOK

**Trend: - Consolidate**

**Resistance: - 18950, 19070**

**Support: - 18670, 18500**

**Strategy: - Sell on high**

### BANK NIFTY DAILY



# Disclaimer

The information and views in this report, our website & all the service we provide are believed to be reliable, but we do not accept any responsibility (or liability) for errors of fact or opinion. Users have the right to choose the product/s that suits them the most.

Sincere efforts have been made to present the right investment perspective. The information contained herein is based on analysis and up on sources that we consider reliable.

**This material is for personal information and based upon it & takes no responsibility**

The information given herein should be treated as only factor, while making investment decision. The report does not provide individually tailor-made investment advice. Money CapitalHeight Research investment advisors Pvt. Ltd. recommends that investors independently evaluate particular investments and strategies, and encourages investors to seek the advice of a financial adviser. Money CapitalHeight Research investment advisors Pvt. Ltd. shall not be responsible for any transaction conducted based on the information given in this report, which is in violation of rules and regulations of NSE and BSE.

The share price projections shown are not necessarily indicative of future price performance. The information herein, together with all estimates and forecasts, can change without notice. Analyst or any person related to Money CapitalHeight Research investment advisors Pvt. Ltd. might be holding positions in the stocks recommended. It is understood that anyone who is browsing through the site has done so at his free will and does not read any views expressed as a recommendation for which either the site or its owners or anyone can be held responsible for. Any surfing and reading of the information is the acceptance of this disclaimer.

All Rights Reserved.

**Investment in Commodity and equity market has its own risks.**

We, however, do not vouch for the accuracy or the completeness thereof. **we are not responsible for any loss incurred whatsoever for any financial profits or loss which may arise from the recommendations above.** Money CapitalHeight Research investment advisors Pvt. Ltd. does not purport to be an invitation or an offer to buy or sell any financial instrument. **Our Clients (Paid Or Unpaid), Any third party or anyone else have no rights to forward or share our calls or SMS or Report or Any Information Provided by us to/with anyone which is received directly or indirectly by them. If found so then Serious Legal Actions can be taken.**