

Daily Newsletter-Equity

24/08/2015




CapitalHEIGHT
When Money Matters

www.capitalheight.com

MARKET WRAP

- ▶ Indian mkts. ended on negative note. Nifty and Sensex dwn by 0.87% and 0.88%.
- ▶ Asia Pacific traded down Hang Seng down by 1.55% and Kospi up by 2.05%
- ▶ Wall St. Flat.USD ISM Manufacturing PMI down to 52.7 Dow fut. dwn by 287 pts.

Indian indices down and closed on positive note. On sectorial front Infra, Media and Auto were down while Pharma, FMCG and IT was down during the session. Sensex was down by 241 points at 27366 & Nifty went down by 72 points to settle at 8299 level. European markets trade downside.

Stock Recommendation



Capital Height's

Stock recommendation for 24/8/2015 is Jubilant. In today's trading session it was up by 4.96%. Its long term trend is up. On daily chart MACD & RSI has given buying confirmation. On daily chart its short term support level is 340. All the indicators are

suggesting that one can go for long position in this stock above 373 levels. The stock may test level of 385-400 in coming days.

Our recommendation on Jubilant is **long** above 373 levels for target of 385-400.

MARKET PERFORMANCE

Sectorial Indices

INDEX	P. CLOSE	OPEN	HIGH	LOW	LAST	% CHANGE
CNX Nifty	8372.75	8305.40	8322.20	8225.05	8299.95	-0.87
CNX Nifty Junior	21207.30	21003.00	21101.75	20789.90	21046.15	-0.76
India VIX	16.98	16.98	18.73	15.19	17.12	0.82
CNX 100	8535.10	8464.20	8484.25	8382.55	8462.40	-0.85
CNX 500	7016.95	6955.90	6973.90	6889.00	6961.00	-0.80
CNX Midcap	13831.75	13696.65	13762.40	13551.15	13749.15	-0.60
Nifty Midcap 50	3364.10	3320.85	3350.90	3280.65	3343.75	-0.60
Bank Nifty	18283.10	17978.25	18118.80	17842.10	18057.20	-1.24
CNX Energy	8077.65	8008.70	8012.85	7919.80	7998.60	-0.98
CNX FMCG	20640.25	20565.05	20758.45	20360.25	20704.55	0.31
CNX IT	11985.25	12009.80	12102.80	11825.05	12032.30	0.39
CNX Media	2406.40	2388.60	2388.60	2330.20	2352.15	-2.25
CNX Metal	1838.40	1815.85	1830.50	1798.85	1822.35	-0.87
CNX MNC	10244.90	10198.70	10211.20	10098.85	10198.05	-0.46
CNX Pharma	13463.75	13405.30	13534.30	13155.70	13470.00	0.05
CNX PSE	3228.95	3195.50	3202.45	3164.85	3191.85	-1.15
CNX PSU Bank	3522.30	3396.25	3513.55	3358.30	3493.40	-0.82
CNX Realty	170.95	168.00	170.15	164.80	166.50	-2.60

Index PE

Index PE	21Aug 2015
Nifty	22.99
Sensex	21.51

Nifty Stats

Market Breadth	NSE	BSE
Advance	10	955
Decline	39	1862
Same	01	89

Macro Economic Data

Economic Data	Current	Previous
Monthly Inflation (m-o-m)	5.20%	4.38%
IIP Growth (m-o-m)	5.00%	2.60%
Repo Rate	7.25%	7.50%
Reserve Repo Rate	7.00%	7.00%
CRR	4.00%	4.00%
GDP Growth (Q-o-Q)	7.50%	5.30%

Index Movers (Pulling Up/Down)

Company Name	Contribution/Up	Company Name	Contribution/Down
Infosys	7.24	Bosch	-5.30
HUL	2.21	Tata Motors	-5.62
ITC	1.9	HDFC Bank	-6.51
Cipla	0.73	HDFC	-8.20
Tech Mahindra	0.63	Larsen	-8.46

Nifty Gainers/ Losers

Symbol	Close Price	% Change	Symbol	Close Price	% Change
HINDUNILVR	886.50	1.66	YESBANK	690.50	-4.10
HINDALCO	86.25	1.53	BAJAJ-AUTO	2397.00	-3.80
AMBUJACEM	226.45	1.12	VEDL	95.20	-3.45
CIPLA	698.00	0.93	ZEEL	381.60	-3.27
INFY	1143.90	0.82	GAIL	310.00	-3.22

52 Week High/ Low

Symbol	Close Price	% Change	Symbol	Close Price	% Change
8KMILES	1044.00	6.9	20MICRONS	26.80	-0.74
ALLSEC	50.95	4.94	ABAN	275.75	-2.01
AMARAJABAT	1078.90	2.87	ADANIPOWER	25.65	-1.16
CAPLIPOINT	1463.00	7.23	ALANKIT	214.00	0
CEATLTD	1185.00	5.5	ALPHAGEO	300.10	-1.51

Most Active Securities

Symbol	Close Price	% Change
YESBANK	690.50	-4.10
INFY	1143.90	0.82
AXISBANK	524.25	-1.72
SBIN	267.05	-1.29
TCS	2671.00	-0.59

Asian Markets

Name	Open	High	Low	Current Value	Change	% Chg
Nikkei 225	19711.34	19737.54	19435.83	19435.83	-597.69	-3.08
Hang Seng	22343.25	22492.79	22185.85	22409.62	-347.85	-1.55
Taiwan Weighted	7941.95	7941.95	7786.92	7786.92	-242.89	-3.12
KOSPI	1862.79	1886.49	1856.91	1876.07	-38.48	-2.05
Jakarta Composite	4401.67	4401.67	4335.95	4335.95	-105.96	-2.44

DERIVATIVE CORNER

Most Active Call Options

Symbol	Expiry Date	Option type	Strike price	LTP	Traded volume (Contracts)	Traded value (Lakhs)	Open Interest
NIFTY	27-Aug-15	CE	8300	57.25	15,00,662	31,34,068.81	24,41,275
NIFTY	27-Aug-15	CE	8400	23.8	13,61,520	28,66,860.76	41,57,000
NIFTY	27-Aug-15	CE	8500	9	10,79,410	22,96,096.67	55,67,275
NIFTY	27-Aug-15	CE	8600	3.3	6,91,541	14,87,421.71	55,87,650
NIFTY	27-Aug-15	CE	8200	118.6	4,04,130	8,39,166.85	7,91,900

Most Active Put Options

Symbol	Expiry Date	Option type	Strike price	LTP	Traded volume (Contracts)	Traded value (Lakhs)	Open Interest
NIFTY	27-Aug-15	PE	8200	33	15,92,380	32,83,041.69	54,25,125
NIFTY	27-Aug-15	PE	8300	68.45	12,17,331	25,52,837.45	47,96,100
NIFTY	27-Aug-15	PE	8100	14.25	9,72,697	19,75,195.00	30,20,475
NIFTY	27-Aug-15	PE	8000	7.45	7,23,004	14,47,876.97	45,13,925
NIFTY	27-Aug-15	PE	8400	131.2	3,39,485	7,26,377.38	18,84,000

Securities in Ban (24-08-2015)

Securities In Ban		
IBREALEST	INDIACEM	JINDALSTEEL
-	-	-

F&O Trade Statistics

Product	No Of Contracts	Turnover In Rs. (Cr)	Put Call Ratio
Index Futures	9,85,433	25052.03	-
Stock Futures	12,37,444	33873.84	-
Index Options	1,48,19,613	3,34,365.52	0.94
Stock Options	6,66,897	18989.58	0.56
F&O Total	1,77,09,387	4,12,280.97	0.92

FII Trading Activity (NSE & BSE) In Crores

CATEGORY	DATE	BUY VALUE	SELL VALUE	NET VALUE
FII	21-Aug-2015	4699.37	5706.63	1007.26

DII Trading Activity (NSE & BSE) In Crores

CATEGORY	DATE	BUY VALUE	SELL VALUE	NET VALUE
DII	21-Aug-2015	2018.09	1450.22	567.87

Corporate Actions (24Aug 2015)

EX-Dividend- Kaveri Seeds, Hinduja Global, Kanoria Chem

Board Meeting (Purpose)

Asian Granito, Softech Infi, Powerhouse Fit

TECHNICAL VIEW

NIFTY

DAILY PIVOT

SCRIPT	R4	R3	R2	R1	P	S1	S2	S3	S4
NIFTY	8614	8512	8410	8395	8308	8293	8206	8104	8002

OUTLOOK

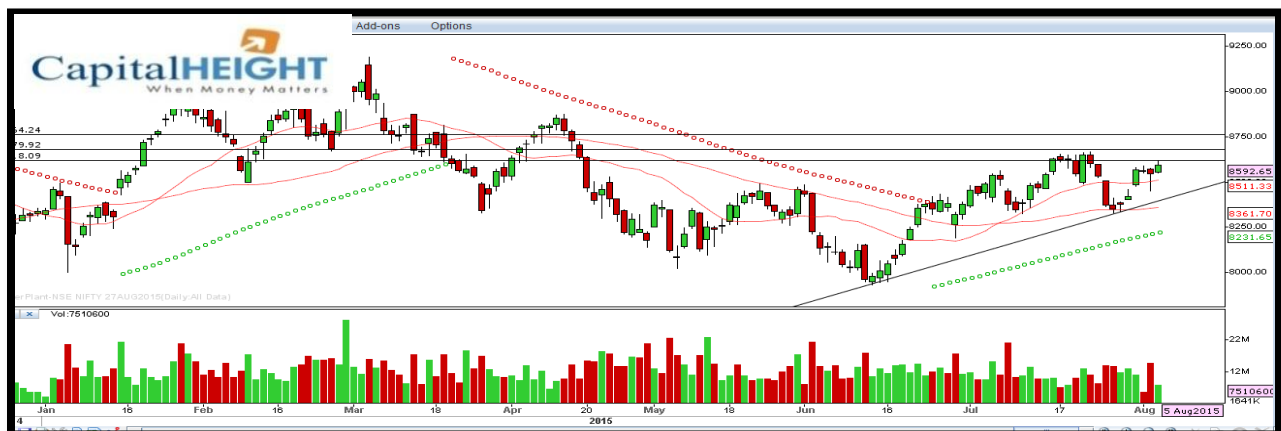
Trend: - Consolidate

Resistance: - 8390, 8420

Support: - 8290, 8200

Strategy: - Sell on high

NIFTY DAILY



BANK NIFTY

DAILY PIVOT

SCRIPT	R4	R3	R2	R1	P	S1	S2	S3	S4
BANK NIFTY	18913	18641	18369	18339	18097	18067	17825	18553	17281

OUTLOOK

Trend: - Consolidate

Resistance: - 18340, 18370

Support: - 18070, 17820

Strategy: - Sell on high

BANK NIFTY DAILY



Disclaimer

The information and views in this report, our website & all the service we provide are believed to be reliable, but we do not accept any responsibility (or liability) for errors of fact or opinion. Users have the right to choose the product/s that suits them the most.

Sincere efforts have been made to present the right investment perspective. The information contained herein is based on analysis and up on sources that we consider reliable.

This material is for personal information and based upon it & takes no responsibility

The information given herein should be treated as only factor, while making investment decision. The report does not provide individually tailor-made investment advice. Money CapitalHeight Research investment advisors Pvt. Ltd. recommends that investors independently evaluate particular investments and strategies, and encourages investors to seek the advice of a financial adviser. Money CapitalHeight Research investment advisors Pvt. Ltd. shall not be responsible for any transaction conducted based on the information given in this report, which is in violation of rules and regulations of NSE and BSE.

The share price projections shown are not necessarily indicative of future price performance. The information herein, together with all estimates and forecasts, can change without notice. Analyst or any person related to Money CapitalHeight Research investment advisors Pvt. Ltd. might be holding positions in the stocks recommended. It is understood that anyone who is browsing through the site has done so at his free will and does not read any views expressed as a recommendation for which either the site or its owners or anyone can be held responsible for. Any surfing and reading of the information is the acceptance of this disclaimer.

All Rights Reserved.

Investment in Commodity and equity market has its own risks.

We, however, do not vouch for the accuracy or the completeness thereof. **we are not responsible for any loss incurred whatsoever for any financial profits or loss which may arise from the recommendations above.** Money CapitalHeight Research investment advisors Pvt. Ltd. does not purport to be an invitation or an offer to buy or sell any financial instrument. **Our Clients (Paid Or Unpaid), Any third party or anyone else have no rights to forward or share our calls or SMS or Report or Any Information Provided by us to/with anyone which is received directly or indirectly by them. If found so then Serious Legal Actions can be taken.**