

# Daily Newsletter-Equity

## 27/08/2015



  
**CapitalHEIGHT**  
When Money Matters

[www.capitalheight.com](http://www.capitalheight.com)

# MARKET WRAP

- ▶ Indian markets ended bearish note. Nifty and Sensex down by 1.13% and 1.22%.
- ▶ Asia Pacific traded mixed Hang Seng down by 1.54% and Kospi up by 2.51%
- ▶ Wall St. Flat.USD ISM Manufacturing PMI down to 52.7. Dow fut. down 305 pts.

Indian broad indices showed bearish movement and closed on negative note. On sectorial front FMGC, Pharma and IT were down while an Energy was up by 0.17%. Sensex was down by 317 points at 25714 & Nifty went down by 88 points to settle at 7791 level. European markets trade downside.

## Stock Recommendation



### Capital Height's

Stock recommendation for 27/8/2015 is Apollo Tyre. In today's trading session it was up by 3.50%. Its long term trend is up. On daily chart MACD & RSI has given buying confirmation. On daily chart its short term support level is 174. All the

indicators are suggesting that one can go for long position in this stock above 183.50 levels. The stock may test level of 187-195 in coming days.

Our recommendation on Apollo Tyres is **long** above 184 levels for target of 187-193.

# MARKET PERFORMANCE

## Sectorial Indices

INDEX	P. CLOSE	OPEN	HIGH	LOW	LAST	% CHANGE
CNX Nifty	7880.7	7865.25	7930.05	7777.1	7791.85	-1.13
CNX Nifty Junior	19742.6	19710.4	19948.9	19400.1	19585.85	-0.79
India VIX	26.8475	26.8475	29.05	23.53	25.52	-4.96
CNX 100	8018.9	8003.65	8073.65	7918	7932.90	-1.07
CNX 500	6569.85	6560.15	6621.3	6487	6513.35	-0.86
CNX Midcap	12790.9	12775.45	12966.4	12582.7	12756.10	-0.27
Nifty Midcap 50	3056.85	3048.9	3097.6	2993.15	3055.40	-0.05
Bank Nifty	17192.75	17113.1	17172.2	16875.5	16917.65	-1.60
CNX Energy	7463.9	7462.6	7671.65	7414.65	7476.60	0.17
CNX FMCG	19869.05	19807.1	19960.55	19634.2	19688.00	-0.91
CNX IT	11376.75	11395.5	11548.85	11172.2	11284.10	-0.81
CNX Media	2206.8	2186.75	2268.75	2182.85	2231.40	1.11
CNX Metal	1754.95	1749	1785.55	1729.3	1760.95	0.34
CNX MNC	9632.75	9647.85	9647.85	9484.25	9510.05	-1.27
CNX Pharma	12772.4	12819.9	12949.45	12566.75	12623.05	-1.17
CNX PSE	3037.1	3032.3	3091.85	2999.8	3040.85	0.12
CNX PSU Bank	3233.5	3223.6	3235.7	3134.75	3146.40	-2.69
CNX Realty	158.2	157.65	160.95	155.25	157.90	-0.19

## Index PE

Index PE	26 Aug 2015
Nifty	21.59
Sensex	20.88

## Nifty Stats

Market Breadth	NSE	BSE
Advance	15	1321
Decline	35	1346
Same	00	98

## Macro Economic Data

Economic Data	Current	Previous
Monthly Inflation (m-o-m)	5.20%	4.38%
IIP Growth (m-o-m)	5.00%	2.60%
Repo Rate	7.25%	7.50%
Reserve Repo Rate	7.00%	7.00%
CRR	4.00%	4.00%
GDP Growth (Q-o-Q)	7.50%	5.30%

## Index Movers (Pulling Up/Down)

Company Name	Contribution/Up	Company Name	Contribution/Down
Tata Motors	4.19	SBI	-7.34
Reliance	2.64	Larsen	-7.66
BHEL	2.21	ICICI Bank	-8.92
Wipro	2.02	Infosys	-11.58
Bajaj Auto	1.89	HDFC	-19.20

## Nifty Gainers/ Losers

Symbol	Close Price	% Change	Symbol	Close Price	% Change
BHEL	240.90	4.29	TECHM	506.50	-4.07
TATAPOWER	60.40	3.25	HEROMOTOCO	2370.00	-3.83
CAIRN	128.95	2.46	AMBUJACEM	199.75	-3.78
POWERGRID	131.15	1.98	HDFC	1108.95	-3.19
BAJAJ-AUTO	2240.50	1.92	BANKBARODA	177.00	-3.09

## 52 Week High/ Low

Symbol	Close Price	% Change	Symbol	Close Price	% Change
8KMILES	1157.60	20	AMBUJACEM	199.75	-3.78
ARVINFRA	53.25	-5	ANDHRACEMT	4.45	-3.26
JUBLINDS	271.00	7.82	ANSALHSG	19.90	-0.5
LAOPALA	599.90	7.94	ARVINFRA	53.25	-5
MANPASAND	415.10	5.38	AUSTRAL	0.50	0

## Most Active Securities

Symbol	Close Price	% Change
HDFC	1108.95	-3.19
INFY	1066.25	-1.79
TATAMOTORS	331.40	0.78
TCS	2579.80	0.49
ICICIBANK	279.00	-1.59

## Asian Markets

Name	Open	High	Low	Current Value	Change	% Chg
Nikkei 225	17894.29	18442.84	17714.30	18376.83	570.13	3.1
Hang Seng	21434.25	21686.45	21060.09	21080.39	-324.57	-1.54
Taiwan Weighted	7636.12	7762.45	7547.61	7715.59	39.95	0.52
KOSPI	1843.70	1895.45	1835.58	1894.09	47.46	2.51
Jakarta Composite	4200.82	4237.73	4161.21	4237.73	9.23	0.22

# DERIVATIVE CORNER

## Most Active Call Options

Symbol	Expiry Date	Option type	Strike price	LTP	Traded volume (Contracts)	Traded value (Lakhs)	Open Interest
NIFTY	27-Aug-15	CE	7900	11.90	18,07,748	35,86,757.33	26,03,925
NIFTY	27-Aug-15	CE	8000	3.00	16,38,885	32,82,719.43	45,76,400
NIFTY	27-Aug-15	CE	7800	42.00	7,94,228	15,65,717.25	18,87,000
NIFTY	27-Aug-15	CE	8100	1.15	7,74,010	15,68,022.35	27,81,800
NIFTY	27-Aug-15	CE	8200	0.90	4,28,468	8,78,526.50	18,09,450

## Most Active Put Options

Symbol	Expiry Date	Option type	Strike price	LTP	Traded volume (Contracts)	Traded value (Lakhs)	Open Interest
NIFTY	27-Aug-15	PE	7800	60.3	18,11,869	35,52,105.76	37,98,825
NIFTY	27-Aug-15	PE	7700	24.4	12,58,997	24,29,517.99	30,07,850
NIFTY	27-Aug-15	PE	7900	125	9,92,845	19,80,192.12	16,23,175
NIFTY	27-Aug-15	PE	7600	7.2	5,69,780	10,83,839.79	27,63,550
NIFTY	27-Aug-15	PE	7500	3.3	2,97,952	5,59,008.60	15,67,925

## Securities in Ban (27-08-2015)

Securities In Ban		
-	NIL	-
-	-	-

## F&O Trade Statistics

Product	No Of Contracts	Turnover In Rs. ( Cr)	Put Call Ratio
Index Futures	14,25,036	32963.22	-
Stock Futures	24,35,887	60257.36	-
Index Options	1,59,52,678	3,37,618.69	0.84
Stock Options	5,26,790	14605.66	0.52
<b>F&amp;O Total</b>	<b>2,03,40,391</b>	<b>4,45,444.92</b>	<b>0.83</b>

## FII Trading Activity (NSE & BSE) In Crores

CATEGORY	DATE	BUY VALUE	SELL VALUE	NET VALUE
FII	26-Aug-2015	5050.82	7396.59	<b>2345.77</b>

## DII Trading Activity (NSE & BSE) In Crores

CATEGORY	DATE	BUY VALUE	SELL VALUE	NET VALUE
DII	26-Aug-2015	3358.28	1477.20	<b>1881.08</b>

## Corporate Actions ( 27Aug 2015)

**EX-Dividend-** GAIL, Solar Ind, Container Corp.

**Board Meeting (Purpose)**

TRF, GRM Overseas, Universal (Quarterly results)

# TECHNICAL VIEW

## NIFTY

### DAILY PIVOT

SCRIPT	R4	R3	R2	R1	P	S1	S2	S3	S4
NIFTY	8299	8145	7991	7889	7837	7735	7683	7529	7375

### OUTLOOK

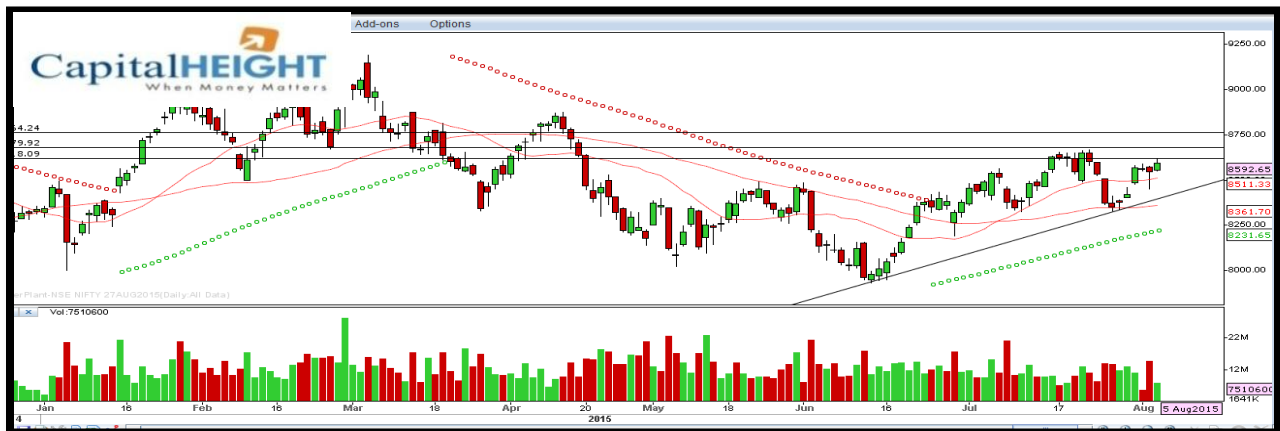
**Trend: - Consolidate**

**Resistance: - 7890, 7990**

**Support: - 7730, 7680**

**Strategy: - Sell on high**

## NIFTY DAILY





## BANK NIFTY

### DAILY PIVOT

SCRIPT	R4	R3	R2	R1	P	S1	S2	S3	S4
BANK NIFTY	17873	17576	17289	17090	16982	16793	16685	16388	16091

### OUTLOOK

**Trend: - Consolidate**

**Resistance: - 17090, 17290**

**Support: - 16790, 16680**

**Strategy: - Sell on high**

### BANK NIFTY DAILY



# Disclaimer

The information and views in this report, our website & all the service we provide are believed to be reliable, but we do not accept any responsibility (or liability) for errors of fact or opinion. Users have the right to choose the product/s that suits them the most.

Sincere efforts have been made to present the right investment perspective. The information contained herein is based on analysis and up on sources that we consider reliable.

**This material is for personal information and based upon it & takes no responsibility**

The information given herein should be treated as only factor, while making investment decision. The report does not provide individually tailor-made investment advice. Money CapitalHeight Research investment advisors Pvt. Ltd. recommends that investors independently evaluate particular investments and strategies, and encourages investors to seek the advice of a financial adviser. Money CapitalHeight Research investment advisors Pvt. Ltd. shall not be responsible for any transaction conducted based on the information given in this report, which is in violation of rules and regulations of NSE and BSE.

The share price projections shown are not necessarily indicative of future price performance. The information herein, together with all estimates and forecasts, can change without notice. Analyst or any person related to Money CapitalHeight Research investment advisors Pvt. Ltd. might be holding positions in the stocks recommended. It is understood that anyone who is browsing through the site has done so at his free will and does not read any views expressed as a recommendation for which either the site or its owners or anyone can be held responsible for. Any surfing and reading of the information is the acceptance of this disclaimer.

All Rights Reserved.

**Investment in Commodity and equity market has its own risks.**

We, however, do not vouch for the accuracy or the completeness thereof. **we are not responsible for any loss incurred whatsoever for any financial profits or loss which may arise from the recommendations above.** Money CapitalHeight Research investment advisors Pvt. Ltd. does not purport to be an invitation or an offer to buy or sell any financial instrument. **Our Clients (Paid Or Unpaid), Any third party or anyone else have no rights to forward or share our calls or SMS or Report or Any Information Provided by us to/with anyone which is received directly or indirectly by them. If found so then Serious Legal Actions can be taken.**