

Daily Newsletter-Equity

28/08/2015




CapitalHEIGHT
When Money Matters

www.capitalheight.com

MARKET WRAP

- ▶ Indian markets ended bullish note. Nifty and Sensex up by 2.02% and 2.01%.
- ▶ Asia Pacific traded positively Hang Seng up by 3.47% and Kospi up by 0.73%
- ▶ Wall St. Flat.USD ISM Manufacturing PMI down to 52.7. Dow fut. up 520 pts.

Indian broad indices showed bullish movement and closed on positive note. On sectorial front FMGC, Pharma and IT were up while an INDIIVIX was down by 13.60%. Sensex was up by 516 points at 26231 & Nifty went up by 157 points to settle at 7949 level. European markets trade up side.

Stock Recommendation



Capital Height's

Stock recommendation for 28/8/2015 is RECLTD. In today's trading session it was up by 5.61%. Its long term trend is down. On daily chart MACD & RSI has given buying confirmation. On daily chart its short term support level is 246.

All the indicators are suggesting that one can go for long position in this stock above 255 levels. The stock may test level of 259-267 in coming days.

Our recommendation on RECLTD is **long** above 255 levels for target of 259- 267.

MARKET PERFORMANCE

Sectorial Indices

INDEX	P. CLOSE	OPEN	HIGH	LOW	LAST	% CHANGE
CNX Nifty	7791.85	7921.6	7963.6	7862.3	7948.95	2.02
CNX Nifty Junior	19585.85	19937.5	20172.5	19803.65	20120.75	2.73
India VIX	25.515	25.515	25.515	21.515	22.04	-13.60
CNX 100	7932.9	8066.7	8114.75	8007.95	8102.20	2.13
CNX 500	6513.35	6622.45	6667.05	6583.1	6657.25	2.21
CNX Midcap	12756.1	12989.8	13123.5	12927.4	13105.30	2.74
Nifty Midcap 50	3055.4	3117.3	3158.2	3090.2	3150.60	3.12
Bank Nifty	16917.65	17175.65	17249.5	17061.85	17214.40	1.75
CNX Energy	7476.6	7612.15	7682.35	7542.15	7634.60	2.11
CNX FMCG	19688	19999.3	20167.4	19774.8	20097.65	2.08
CNX IT	11284.1	11438.7	11476.8	11351.05	11396.90	1.00
CNX Media	2231.4	2274.65	2288.2	2241.3	2279.65	2.16
CNX Metal	1760.95	1792.55	1819.65	1773.45	1809.70	2.77
CNX MNC	9510.05	9636.4	9674.4	9577.05	9630.45	1.27
CNX Pharma	12623.05	12902.3	13024.2	12786.4	12995.75	2.95
CNX PSE	3040.85	3090	3110.05	3057.45	3097.30	1.86
CNX PSU Bank	3146.4	3222.5	3236.2	3176.4	3230.25	2.66
CNX Realty	157.9	161.60	164.85	159.35	164.45	4.15

Index PE

Index PE	27 Aug 2015
Nifty	22.02
Sensex	21.09

Nifty Stats

Market Breadth	NSE	BSE
Advance	41	2000
Decline	09	678
Same	00	97

Macro Economic Data

Economic Data	Current	Previous
Monthly Inflation (m-o-m)	5.20%	4.38%
IIP Growth (m-o-m)	5.00%	2.60%
Repo Rate	7.25%	7.50%
Reserve Repo Rate	7.00%	7.00%
CRR	4.00%	4.00%
GDP Growth (Q-o-Q)	7.50%	5.30%

Index Movers (Pulling Up/Down)

Company Name	Contribution/Up	Company Name	Contribution/Down
HDFC	39.89	NTPC	-0.43
ITC	12.5	Hero Motocorp	-0.53
Infosys	9.82	Tata Motors	-0.69
Reliance	7.75	BHEL	-2.02
Sun Pharma	7.74	Bajaj Auto	-2.28

Nifty Gainers/ Losers

Symbol	Close Price	% Change	Symbol	Close Price	% Change
HDFC	1197.80	8.66	BHEL	232.30	-3.27
CAIRN	139.45	7.48	BAJAJ-AUTO	2191.60	-2.36
VEDL	91.55	7.01	TCS	2567.00	-0.38
NMDC	98.35	6.50	WIPRO	549.50	-0.26
AMBUJACEM	210.90	6.41	HEROMOTOCO	2387.00	-0.24

52 Week High/ Low

Symbol	Close Price	% Change	Symbol	Close Price	% Change
8KMILES	1204.00	4.01	ANDHRACEMT	4.30	-4.44
JUBLINDS	273.80	1.43	ARVINFRA	50.60	-4.98
LAOPALA	571.00	-4.48	AUSTRAL	0.50	0
RAMASTEEL	721.00	2.49	BIRLACOT	0.05	0
SATIN	92.90	4.97	BIRLAERIC	46.80	4.93

Most Active Securities

Symbol	Close Price	% Change
HDFC	1197.80	8.66
INFY	1084.00	1.82
ICICIBANK	282.65	1.65
LT	1616.85	1.55
TCS	2567.00	-0.38

Asian Markets

Name	Open	High	Low	Current Value	Change	% Chg
Nikkei 225	18680.47	18810.05	18486.46	18574.44	197.61	1.06
Hang Seng	21758.62	21963.43	21407.59	21838.54	758.15	3.47
Taiwan Weighted	7762.63	7856.40	7762.63	7824.55	108.96	1.39
KOSPI	1912.42	1920.39	1898.98	1908	13.91	0.73
Jakarta Composite	4295.70	4433.46	4295.70	4430.63	192.9	4.35

DERIVATIVE CORNER

Most Active Call Options

Symbol	Expiry Date	Option type	Strike price	LTP	Traded volume (Contracts)	Traded value (Lakhs)	Open Interest
NIFTY	27-Aug-15	CE	7900	49.00	21,08,364	41,80,975.42	7,00,975
NIFTY	27-Aug-15	CE	8000	0.10	20,42,987	40,87,133.40	65,00,700
NIFTY	27-Aug-15	CE	7950	0.05	16,32,477	32,47,968.08	17,04,575
NIFTY	27-Aug-15	CE	7800	144.85	4,53,870	8,96,682.59	2,22,050
NIFTY	27-Aug-15	CE	8100	0.05	3,36,638	6,81,713.83	33,02,475

Most Active Put Options

Symbol	Expiry Date	Option type	Strike price	LTP	Traded volume (Contracts)	Traded value (Lakhs)	Open Interest
NIFTY	27-Aug-15	PE	7900	0.05	22,08,884	43,73,678.68	30,69,925
NIFTY	27-Aug-15	PE	7800	0.05	17,21,203	33,58,712.50	50,19,100
NIFTY	27-Aug-15	PE	7850	0.05	11,65,020	22,89,226.44	21,21,375
NIFTY	27-Aug-15	PE	7950	0.35	6,74,838	13,44,191.25	11,60,000
NIFTY	27-Aug-15	PE	7700	0.05	4,37,685	8,42,673.84	27,82,275

Securities in Ban (28-08-2015)

Securities In Ban		
-	-	-
-	-	-

F&O Trade Statistics

Product	No Of Contracts	Turnover In Rs. (Cr)	Put Call Ratio
Index Futures	15,20,687	35869.55	-
Stock Futures	28,60,700	70339.58	-
Index Options	1,92,05,647	4,11,951.36	0.98
Stock Options	5,83,659	15644.66	0.54
F&O Total	2,41,70,693	5,33,805.15	0.96

FII Trading Activity (NSE & BSE) In Crores

CATEGORY	DATE	BUY VALUE	SELL VALUE	NET VALUE
FII	27-Aug-2015	7474.44	10821.79	3347.35

DII Trading Activity (NSE & BSE) In Crores

CATEGORY	DATE	BUY VALUE	SELL VALUE	NET VALUE
DII	27-Aug-2015	5078.89	2501.83	2577.06

Corporate Actions (28 Aug 2015)

EX-Dividend- BPCL, Chambal Fert, SRF .

Board Meeting (Purpose)

Allahabad Bank, P&G, Andhra Cement (Quarterly results)

TECHNICAL VIEW

NIFTY

DAILY PIVOT

SCRIPT	R4	R3	R2	R1	P	S1	S2	S3	S4
NIFTY	8284	8176	8068	8029	7960	7921	7852	7744	7636

OUTLOOK

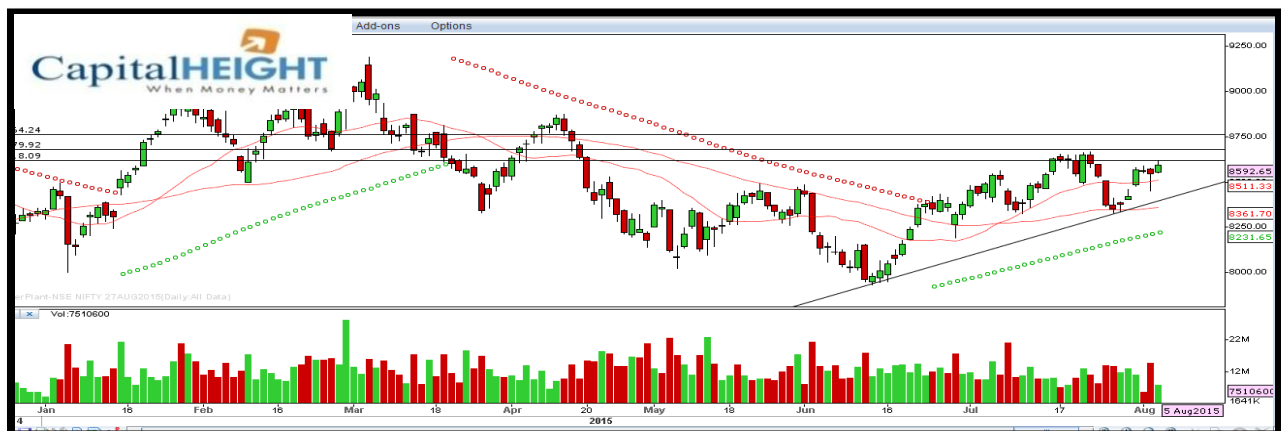
Trend: - Consolidate

Resistance: - 8030, 8070

Support: - 7920, 7850

Strategy: - Sell on high

NIFTY DAILY



BANK NIFTY

DAILY PIVOT

SCRIPT	R4	R3	R2	R1	P	S1	S2	S3	S4
BANK NIFTY	17940	17724	17508	17434	17292	17218	17076	16860	16644

OUTLOOK

Trend: - Consolidate

Resistance: - 17440, 17510

Support: - 17210, 17070

Strategy: - Sell on high

BANK NIFTY DAILY



Disclaimer

The information and views in this report, our website & all the service we provide are believed to be reliable, but we do not accept any responsibility (or liability) for errors of fact or opinion. Users have the right to choose the product/s that suits them the most.

Sincere efforts have been made to present the right investment perspective. The information contained herein is based on analysis and up on sources that we consider reliable.

This material is for personal information and based upon it & takes no responsibility

The information given herein should be treated as only factor, while making investment decision. The report does not provide individually tailor-made investment advice. Money CapitalHeight Research investment advisors Pvt. Ltd. recommends that investors independently evaluate particular investments and strategies, and encourages investors to seek the advice of a financial adviser. Money CapitalHeight Research investment advisors Pvt. Ltd. shall not be responsible for any transaction conducted based on the information given in this report, which is in violation of rules and regulations of NSE and BSE.

The share price projections shown are not necessarily indicative of future price performance. The information herein, together with all estimates and forecasts, can change without notice. Analyst or any person related to Money CapitalHeight Research investment advisors Pvt. Ltd. might be holding positions in the stocks recommended. It is understood that anyone who is browsing through the site has done so at his free will and does not read any views expressed as a recommendation for which either the site or its owners or anyone can be held responsible for. Any surfing and reading of the information is the acceptance of this disclaimer.

All Rights Reserved.

Investment in Commodity and equity market has its own risks.

We, however, do not vouch for the accuracy or the completeness thereof. **we are not responsible for any loss incurred whatsoever for any financial profits or loss which may arise from the recommendations above.** Money CapitalHeight Research investment advisors Pvt. Ltd. does not purport to be an invitation or an offer to buy or sell any financial instrument. **Our Clients (Paid Or Unpaid), Any third party or anyone else have no rights to forward or share our calls or SMS or Report or Any Information Provided by us to/with anyone which is received directly or indirectly by them. If found so then Serious Legal Actions can be taken.**