

# Daily Newsletter-Equity

## 31/08/2015



  
**CapitalHEIGHT**  
When Money Matters

[www.capitalheight.com](http://www.capitalheight.com)

# MARKET WRAP

- ▶ Indian markets ended bullish note. Nifty and Sensex up by 0.67% and 0.61%.
- ▶ Asia Pacific traded mixed Hang Seng down by 1.05% and Kospi up by 1.53%
- ▶ Wall St. Flat.USD ISM Manufacturing PMI down to 52.7. Dow fut. up 70 pts.

Indian broad indices showed consolidate movement and closed on positive note. On sectorial front FMGC, Media and IT were up while an Pharma was down by 0.42%. Sensex was up by 161 points at 26392 & Nifty went up by 53 points to settle at 8002 level. European markets trade down side.

## Stock Recommendation



### Capital Height's

Stock recommendation for 31/8/2015 is Dishman Pharma. In today's trading session it was up by 5.64%. Its long term trend is up. On daily chart MACD & RSI has given buying confirmation. On daily chart its short term support level is 198.

All the indicators are suggesting that one can go for long position in this stock above 215.60 levels. The stock may test level of 226 - 230 in coming days.

Our recommendation on Dishman Pharma is **long** above 216 levels for target of 220-225.

# MARKET PERFORMANCE

## Sectorial Indices

INDEX	P. CLOSE	OPEN	HIGH	LOW	LAST	% CHANGE
CNX Nifty	7948.95	8053.7	8091.8	7961.65	8001.95	0.67
CNX Nifty Junior	20120.75	20323.3	20427.1	20091.95	20215.35	0.47
India VIX	22.0425	22.0425	23.6725	19.8025	23.33	5.84
CNX 100	8102.2	8204.8	8242.15	8111.35	8153.55	0.63
CNX 500	6657.25	6738.8	6772.75	6666.65	6694.45	0.56
CNX Midcap	13105.3	13240.65	13311.45	13049.95	13134.30	0.22
Nifty Midcap 50	3150.6	3192.55	3213.85	3120.6	3147.05	-0.11
Bank Nifty	17214.4	17425.3	17569.8	17099.8	17211.95	-0.01
CNX Energy	7634.6	7732.3	7808.4	7661.25	7727.85	1.22
CNX FMCG	20097.65	20311.6	20311.6	20089.3	20173.90	0.38
CNX IT	11396.9	11545.3	11645.05	11534.85	11588.25	1.68
CNX Media	2279.65	2320.55	2371.7	2311.9	2331.95	2.29
CNX Metal	1809.7	1850.2	1850.2	1803.5	1820.15	0.58
CNX MNC	9630.45	9734.15	9807.8	9658.35	9704.10	0.76
CNX Pharma	12995.75	13175.7	13230.85	12793.75	12940.75	-0.42
CNX PSE	3097.3	3146.35	3167.05	3098.65	3126.05	0.93
CNX PSU Bank	3230.25	3291.85	3312.15	3183.6	3203.40	-0.83
CNX Realty	164.45	166.85	168.80	161.80	163.65	-0.49

## Index PE

Index PE	28 Aug 2015
Nifty	22.17
Sensex	21.14

## Nifty Stats

Market Breadth	NSE	BSE
Advance	32	1294
Decline	18	1404
Same	00	105

## Macro Economic Data

Economic Data	Current	Previous
Monthly Inflation (m-o-m)	5.20%	4.38%
IIP Growth (m-o-m)	5.00%	2.60%
Repo Rate	7.25%	7.50%
Reserve Repo Rate	7.00%	7.00%
CRR	4.00%	4.00%
GDP Growth (Q-o-Q)	7.50%	5.30%

## Index Movers (Pulling Up/Down)

Company Name	Contribution/Up	Company Name	Contribution/Down
Infosys	13.11	Yes Bank	-1.08
ONGC	6.79	IndusInd Bank	-1.30
HCL Tech	5.23	BPCL	-1.32
Bharti Airtel	4.33	Lupin	-2.30
Bosch	4.09	Sun Pharma	-3.56

## Nifty Gainers/ Losers

Symbol	Close Price	% Change	Symbol	Close Price	% Change
VEDL	96.30	5.65	LUPIN	1856.20	-2.30
ONGC	243.15	5.58	PNB	143.15	-1.88
ZEEL	387.95	4.57	AMBUJACEM	206.10	-1.81
CAIRN	145.35	4.38	SUNPHARMA	888.00	-1.55
NMDC	100.90	4.29	COALINDIA	356.25	-1.55

## 52 Week High/ Low

Symbol	Close Price	% Change	Symbol	Close Price	% Change
8KMILES	1235.00	2.35	ANDHRACEMT	4.05	-5.81
BAJAJCORP	495.00	1.84	ARVINFRA	48.10	-4.94
DSKULKARNI	104.50	16.89	ASHAPURMIN	48.00	-7.07
ESCORTS	166.75	-2.74	AUSTRAL	0.45	-10
ESTER	33.80	2.89	BANARISUG	661.90	-0.9

## Most Active Securities

Symbol	Close Price	% Change
AXISBANK	509.60	0.07
SUNPHARMA	888.00	-1.55
SBIN	248.50	-0.38
INFY	1114.40	2.92
YESBANK	678.15	-1.37

## Asian Markets

Name	Open	High	Low	Current Value	Change	% Chg
Nikkei 225	18908.73	19192.82	18901.09	19136.32	561.88	2.94
Hang Seng	22424.40	22424.40	21585.33	21612.39	-226.15	-1.05
Taiwan Weighted	7923.77	8039.76	7923.77	8019.18	194.63	2.43
KOSPI	1932.39	1938.61	1927.39	1937.67	29.67	1.53
Jakarta Composite	4480.11	4511.25	4433.66	4446.2	15.57	0.35

## DERIVATIVE CORNER

### Most Active Call Options

Symbol	Expiry Date	Option type	Strike price	LTP	Traded volume (Contracts)	Traded value (Lakhs)	Open Interest
NIFTY	24-Sep-15	CE	8200	99.00	4,40,707	9,15,106.05	29,06,250
NIFTY	24-Sep-15	CE	8300	64.20	4,10,176	8,58,223.55	24,99,700
NIFTY	24-Sep-15	CE	8100	142.00	3,40,351	7,02,147.52	22,78,650
NIFTY	24-Sep-15	CE	8400	40.65	3,12,153	6,58,944.84	20,77,750
NIFTY	24-Sep-15	CE	8500	25.10	2,99,043	6,37,476.69	35,91,050

### Most Active Put Options

Symbol	Expiry Date	Option type	Strike price	LTP	Traded volume (Contracts)	Traded value (Lakhs)	Open Interest
NIFTY	24-Sep-15	PE	7900	152	4,00,233	8,02,955.45	24,14,075
NIFTY	24-Sep-15	PE	7800	122.15	3,96,837	7,83,769.94	45,96,925
NIFTY	24-Sep-15	PE	8000	189	3,71,871	7,58,432.76	44,38,600
NIFTY	24-Sep-15	PE	7700	97.5	2,75,708	5,36,181.07	21,84,350
NIFTY	24-Sep-15	PE	7600	76.45	2,30,066	4,40,667.27	26,56,150

### Securities in Ban (31-08-2015)

Securities In Ban		
-	-	-
-	-	-

## F&O Trade Statistics

Product	No Of Contracts	Turnover In Rs. ( Cr)	Put Call Ratio
Index Futures	8,75,047	21734.95	-
Stock Futures	9,26,126	24232.69	-
Index Options	61,17,452	1,34,670.19	0.93
Stock Options	4,22,745	11130.52	0.5
<b>F&amp;O Total</b>	<b>83,41,370</b>	<b>1,91,768.35</b>	<b>0.9</b>

## FII Trading Activity (NSE & BSE) In Crores

CATEGORY	DATE	BUY VALUE	SELL VALUE	NET VALUE
FII	28-Aug-2015	5682.45	5626.04	<b>56.41</b>

## DII Trading Activity (NSE & BSE) In Crores

CATEGORY	DATE	BUY VALUE	SELL VALUE	NET VALUE
DII	28-Aug-2015	1832.89	985.46	<b>847.43</b>

## Corporate Actions ( 31 Aug 2015)

**EX-Dividend-** Shivam Auto, Rapco Home, Onmobile Global.

### Board Meeting (Purpose)

Ruby Mills, BSEL Infra, Dishman Pharma (Quarterly results)

# TECHNICAL VIEW

## NIFTY

### DAILY PIVOT

SCRIPT	R4	R3	R2	R1	P	S1	S2	S3	S4
NIFTY	8466	8324	8182	8097	8040	7955	7898	7756	7614

### OUTLOOK

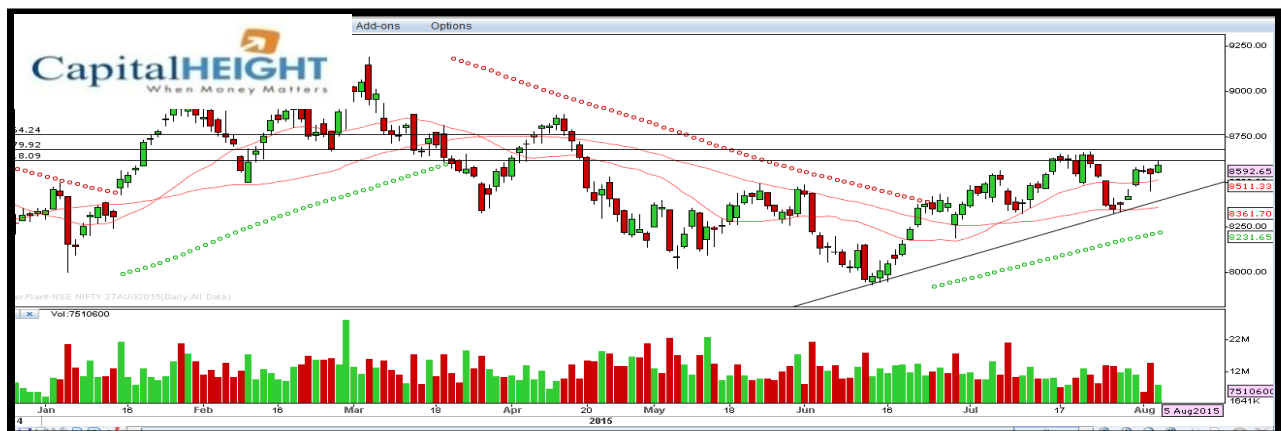
**Trend: - Consolidate**

**Resistance: - 8100, 8180**

**Support: - 7950, 7900**

**Strategy: - Sell on high**

## NIFTY DAILY





## BANK NIFTY

### DAILY PIVOT

SCRIPT	R4	R3	R2	R1	P	S1	S2	S3	S4
BANK NIFTY	18878	18370	17862	17556	17354	17048	16846	16338	15830

### OUTLOOK

**Trend: - Consolidate**

**Resistance: - 17560, 17860**

**Support: - 17050, 16840**

**Strategy: - Sell on high**

### BANK NIFTY DAILY



# Disclaimer

The information and views in this report, our website & all the service we provide are believed to be reliable, but we do not accept any responsibility (or liability) for errors of fact or opinion. Users have the right to choose the product/s that suits them the most.

Sincere efforts have been made to present the right investment perspective. The information contained herein is based on analysis and up on sources that we consider reliable.

**This material is for personal information and based upon it & takes no responsibility**

The information given herein should be treated as only factor, while making investment decision. The report does not provide individually tailor-made investment advice. Money CapitalHeight Research investment advisors Pvt. Ltd. recommends that investors independently evaluate particular investments and strategies, and encourages investors to seek the advice of a financial adviser. Money CapitalHeight Research investment advisors Pvt. Ltd. shall not be responsible for any transaction conducted based on the information given in this report, which is in violation of rules and regulations of NSE and BSE.

The share price projections shown are not necessarily indicative of future price performance. The information herein, together with all estimates and forecasts, can change without notice. Analyst or any person related to Money CapitalHeight Research investment advisors Pvt. Ltd. might be holding positions in the stocks recommended. It is understood that anyone who is browsing through the site has done so at his free will and does not read any views expressed as a recommendation for which either the site or its owners or anyone can be held responsible for. Any surfing and reading of the information is the acceptance of this disclaimer.

All Rights Reserved.

**Investment in Commodity and equity market has its own risks.**

We, however, do not vouch for the accuracy or the completeness thereof. **we are not responsible for any loss incurred whatsoever for any financial profits or loss which may arise from the recommendations above.** Money CapitalHeight Research investment advisors Pvt. Ltd. does not purport to be an invitation or an offer to buy or sell any financial instrument. **Our Clients (Paid Or Unpaid), Any third party or anyone else have no rights to forward or share our calls or SMS or Report or Any Information Provided by us to/with anyone which is received directly or indirectly by them. If found so then Serious Legal Actions can be taken.**