

Daily Newsletter-Equity

03/09/2015




CapitalHEIGHT
When Money Matters

www.capitalheight.com

MARKET WRAP

- ▶ Indian markets ended bearish note. Nifty and Sensex down by 0.88% and 0.95%.
- ▶ Asia Pacific traded mixed Nikkei225 and HangSeng down by 0.39% and 1.2%.
- ▶ Wall St. Flat.USD ISM Manufacturing PMI down to 52.7.Dow fut. up 57 pts.

Indian broad indices showed bearish movement and closed on negative note. On sectorial front PSU Bank, PSE and Metal were down while IT sector was up by 1.12%. Sensex was down by 242 points at 25453 & Nifty went down by 68 points to settle at 7717 level. European markets trade in mixed.

Stock Recommendation



Capital Height's

Stock recommendation for 03/09/2015 is Dishman pharma. In today's trading session it was up by 15.20%. Its long term trend is up. On daily chart MACD & RSI has given buying confirmation. On daily chart its short term support level is 235.

All the indicators are suggesting that one can go for long position in this stock above 265 levels. The stock may test level of 270 - 275 in coming days.

Our recommendation on Dishman pharma is **long** above 265 levels for target of 272.

MARKET PERFORMANCE

Sectorial Indices

INDEX	P. CLOSE	OPEN	HIGH	LOW	LAST	% CHANGE
CNX Nifty	7785.85	7856.65	7862.55	7699.25	7717.00	-0.88
CNX Nifty Junior	19752.65	19906.4	19979.75	19546.15	19588.55	-0.83
India VIX	28.7175	28.7175	28.7175	26.375	26.65	-7.19
CNX 100	7938.95	8009.4	8009.9	7854.45	7869.40	-0.88
CNX 500	6522.25	6577.65	6577.65	6464.5	6475.65	-0.71
CNX Midcap	12787.1	12892.1	12926.95	12718.9	12735.20	-0.41
Nifty Midcap 50	3048.1	3075.65	3083.35	3015.85	3027.00	-0.69
Bank Nifty	16530.3	16703.95	16714.5	16218.65	16252.70	-1.68
CNX Energy	7511.65	7576.45	7576.45	7429.4	7441.50	-0.93
CNX FMCG	19762.1	19924.6	20164.2	19803.65	19855.75	0.47
CNX IT	11476.45	11563.95	11752.1	11510.9	11604.70	1.12
CNX Media	2261.7	2277.35	2298.35	2231.65	2244.40	-0.76
CNX Metal	1770.8	1783.85	1791.75	1736.9	1745.50	-1.43
CNX MNC	9535.8	9613	9618.4	9418.65	9438.30	-1.02
CNX Pharma	13007.05	13121.15	13149.65	12810.6	12840.35	-1.28
CNX PSE	3058.75	3077.5	3077.5	2977.65	2983.25	-2.47
CNX PSU Bank	3058.5	3105.8	3105.8	2953.45	2961.75	-3.16
CNX Realty	156	158.25	161.10	156.15	157.10	0.71

Index PE

Index PE	02 SEP 2015
Nifty	21.38
Sensex	20.37

Nifty Stats

Market Breadth	NSE	BSE
Advance	14	07
Decline	26	23
Same	00	00

Macro Economic Data

Economic Data	Current	Previous
Monthly Inflation (m-o-m)	5.20%	4.38%
IIP Growth (m-o-m)	5.00%	2.60%
Repo Rate	7.25%	7.50%
Reserve Repo Rate	7.00%	7.00%
CRR	4.00%	4.00%
GDP Growth (Q-o-Q)	7.50%	5.30%

Index Movers (Pulling Up/Down)

Company Name	Contribution/Up	Company Name	Contribution/Down
TCS	9.05	Axis Bank	-6.36
ITC	7.4	Larsen	-7.18
Infosys	5.78	SBI	-8.25
Idea Cellular	5.2	ICICI Bank	-10.03
Reliance	4.89	HDFC	-15.29

Nifty Gainers/ Losers

Symbol	Close Price	% Change	Symbol	Close Price	% Change
TECHM	538.90	5.19	BHEL	207.30	-4.80
IDEA	154.20	3.21	ONGC	225.30	-3.76
TCS	2600.00	2.47	SBIN	230.35	-3.66
ULTRACEMCO	2895.00	2.15	CAIRN	140.80	-3.26
TATASTEEL	220.90	2.13	HINDUNILVR	826.00	-3.25

52 Week High/ Low

Symbol	Close Price	% Change	Symbol	Close Price	% Change
ABBOTINDIA	5000.00	6.11	ALCHEM	22.00	-8.33
DISHMAN	262.20	16.33	ANDHRACEMT	3.70	-5.13
ESTER	38.90	19.88	ANSALHSG	19.60	-1.75
RAMASTEEL	800.00	1.96	ARVINFRA	41.30	-4.95
SATIN	112.80	4.98	ASHAPURMIN	46.35	-2.22

Most Active Securities

Symbol	Close Price	% Change
HDFC	1129.90	-2.38
INFY	1102.00	1.19
SBIN	230.35	-3.66
AXISBANK	468.80	-2.35
TCS	2600.00	2.47

Asian Markets

Name	Open	High	Low	Current Value	Change	% Chg
Nikkei 225	17861.81	18467.44	17857.30	18095.4	-70.29	-0.39
Hang Seng	21101.42	21288.53	20771.77	20934.94	-250.49	-1.2
Taiwan Weighted	7970.40	8068.06	7907.31	8035.29	17.73	0.22
KOSPI	1886.14	1920.62	1883.50	1915.22	0.99	0.05
Jakarta Composite	4367.81	4417.37	4350.48	4401.29	-11.17	-0.25

DERIVATIVE CORNER

Most Active Call Options

Symbol	Expiry Date	Option type	Strike price	LTP	Traded volume (Contracts)	Traded value (Lakhs)	Open Interest
NIFTY	24-Sep-15	CE	8200	43.15	4,60,356	9,49,938.85	6209.05
NIFTY	24-Sep-15	CE	8000	93.70	4,48,088	9,08,778.48	12602.48
NIFTY	24-Sep-15	CE	8100	64.75	3,68,486	7,53,510.57	7326.42
NIFTY	24-Sep-15	CE	8300	27.85	2,91,131	6,06,653.68	2556.86
NIFTY	24-Sep-15	CE	7900	129.40	2,41,671	4,86,678.27	9378.04

Most Active Put Options

Symbol	Expiry Date	Option type	Strike price	LTP	Traded volume (Contracts)	Traded value (Lakhs)	Open Interest
NIFTY	24-Sep-15	PE	7500	113.4	4,79,972	9,13,375.92	13428.42
NIFTY	24-Sep-15	PE	7400	88	3,60,879	6,75,563.68	7937.53
NIFTY	24-Sep-15	PE	7600	144.05	2,90,434	5,62,057.32	10232.72
NIFTY	24-Sep-15	PE	7700	182.65	2,77,660	5,46,720.18	12224.68
NIFTY	24-Sep-15	PE	7800	227.2	2,65,268	5,31,667.37	14394.77

Securities in Ban (03-09-2015)

Securities In Ban		
-	NIL	-
-	-	-

F&O Trade Statistics

Product	No Of Contracts	Turnover In Rs. (Cr)	Put Call Ratio
Index Futures	9,29,147	22694.99	-
Stock Futures	8,25,397	21076.37	-
Index Options	64,06,634	1,37,769.19	0.92
Stock Options	3,79,611	10083.27	0.59
F&O Total	85,40,789	1,91,623.82	0.9

FII Trading Activity (NSE & BSE) In Crores

CATEGORY	DATE	BUY VALUE	SELL VALUE	NET VALUE
FII	02-Sep-2015	4573.6	6147.02	-1573.42

DII Trading Activity (NSE & BSE) In Crores

CATEGORY	DATE	BUY VALUE	SELL VALUE	NET VALUE
DII	02-Sep-2015	2253.96	1373.69	880.27

Corporate Actions (03 SEP 2015)

EX-Dividend- Talwalkars Fitn, Repco Home, Escorts

Board Meeting (Purpose)

Nissan Copper, Gayatri Project, Suyog Tele.

TECHNICAL VIEW

NIFTY

DAILY PIVOT

SCRIPT	R4	R3	R2	R1	P	S1	S2	S3	S4
NIFTY	8241	8088	7935	7843	7782	7690	7629	7476	7323

OUTLOOK

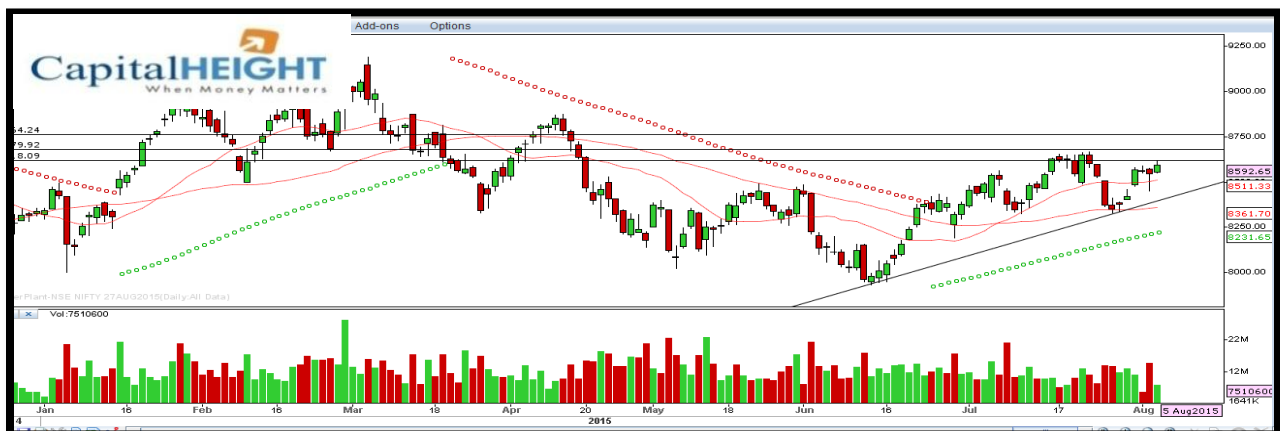
Trend: - Consolidate

Resistance: - 7840, 7940

Support: - 7690, 7630

Strategy: - Sell on high

NIFTY DAILY



BANK NIFTY

DAILY PIVOT

SCRIPT	R4	R3	R2	R1	P	S1	S2	S3	S4
BANK NIFTY	18079	17530	16981	16634	16432	16085	15883	15334	14785

OUTLOOK

Trend: - Consolidate

Resistance: - 16640, 16990

Support: - 16080, 15890

Strategy: - Sell on high

BANK NIFTY DAILY



Disclaimer

The information and views in this report, our website & all the service we provide are believed to be reliable, but we do not accept any responsibility (or liability) for errors of fact or opinion. Users have the right to choose the product/s that suits them the most.

Sincere efforts have been made to present the right investment perspective. The information contained herein is based on analysis and up on sources that we consider reliable.

This material is for personal information and based upon it & takes no responsibility

The information given herein should be treated as only factor, while making investment decision. The report does not provide individually tailor-made investment advice. Money CapitalHeight Research investment advisors Pvt. Ltd. recommends that investors independently evaluate particular investments and strategies, and encourages investors to seek the advice of a financial adviser. Money CapitalHeight Research investment advisors Pvt. Ltd. shall not be responsible for any transaction conducted based on the information given in this report, which is in violation of rules and regulations of NSE and BSE.

The share price projections shown are not necessarily indicative of future price performance. The information herein, together with all estimates and forecasts, can change without notice. Analyst or any person related to Money CapitalHeight Research investment advisors Pvt. Ltd. might be holding positions in the stocks recommended. It is understood that anyone who is browsing through the site has done so at his free will and does not read any views expressed as a recommendation for which either the site or its owners or anyone can be held responsible for. Any surfing and reading of the information is the acceptance of this disclaimer.

All Rights Reserved.

Investment in Commodity and equity market has its own risks.

We, however, do not vouch for the accuracy or the completeness thereof. **we are not responsible for any loss incurred whatsoever for any financial profits or loss which may arise from the recommendations above.** Money CapitalHeight Research investment advisors Pvt. Ltd. does not purport to be an invitation or an offer to buy or sell any financial instrument. **Our Clients (Paid Or Unpaid), Any third party or anyone else have no rights to forward or share our calls or SMS or Report or Any Information Provided by us to/with anyone which is received directly or indirectly by them. If found so then Serious Legal Actions can be taken.**