

Weekly Newsletter-Agri Commodity

5/10/2015




CapitalHEIGHT
When Money Matters

www.capitalheight.com

Weekly News Letter-Agri

Contents

- ▶ **Market Wrap**
 - ▶ Chana
 - ▶ Dhaniya
 - ▶ Jeera
 - ▶ Turmeric
- ▶ **Technical Analysis**
 - ▶ Chana
 - ▶ Dhaniya
 - ▶ Jeera
 - ▶ Turmeric

MARKET WRAP

CHANA

- ▶ Chana future closed on positive note and witnessed bullish movement for the entire week.
- ▶ Chana future broke at DMA resistance level; so chana is expected to remain upside.

DHANIYA

- ▶ Dhaniya future witnessed consolidated movement for the entire week but ended on positive note. Upside movement is expected in next week.
- ▶ There is strong support in Dhaniya so buying may continue from lower level after consolidation and can give rally if break its resistance.

JEERA

- ▶ Jeera future consolidated and closed on negative note but downside movement is expected in next week.
- ▶ There is strong weekly trendline and resistance level. So next week slightly downside movement might be seen.

TURMERIC

- ▶ Turmeric future was consolidated during the week and closed on negative note so downside movement is expected for next week.
- ▶ In weekly chart Turmeric is moving in a range bound channel so further selling may emerge in next week from higher level.

TECHNICAL VIEW

CHANA

WEEKLY PIVOT

SCRIPT	R4	R3	R2	R1	P	S1	S2	S3	S4
CHANA	4993	4882	4771	4731	4660	4620	4549	4438	4327

OUTLOOK

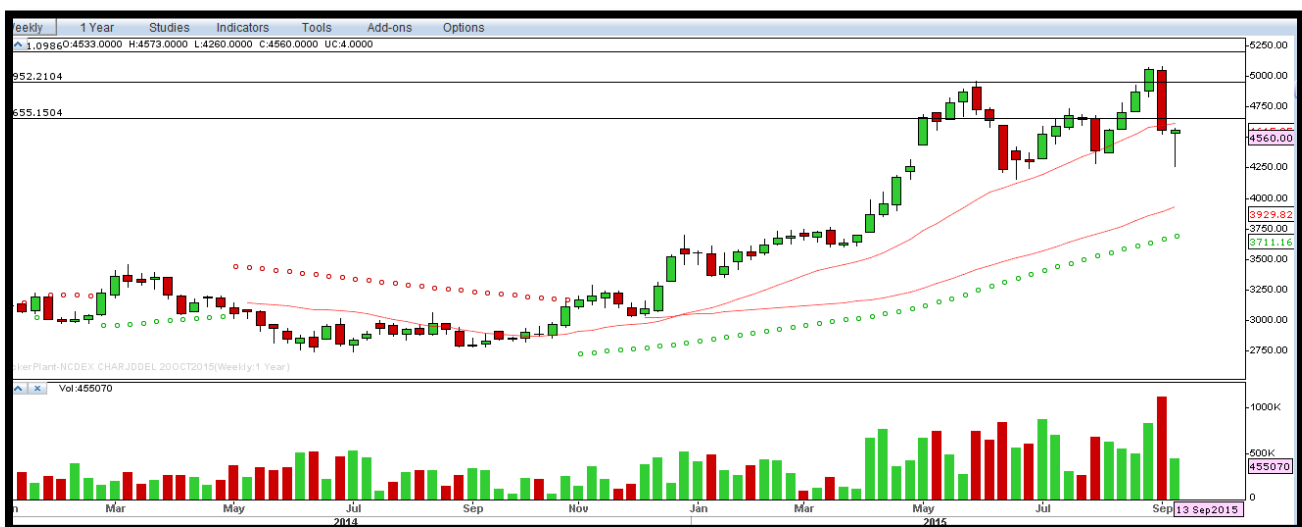
Trend: Consolidate

Resistance: 4730, 4770

Support: 4620, 4550

Strategy: Buy on dips

CHANA WEEKLY



DHANIYA

WEEKLY PIVOT

SCRIPT	R4	R3	R2	R1	P	S1	S2	S3	S4
DHANIYA	11724	11544	11364	11284	11184	11104	11004	10824	10644

OUTLOOK

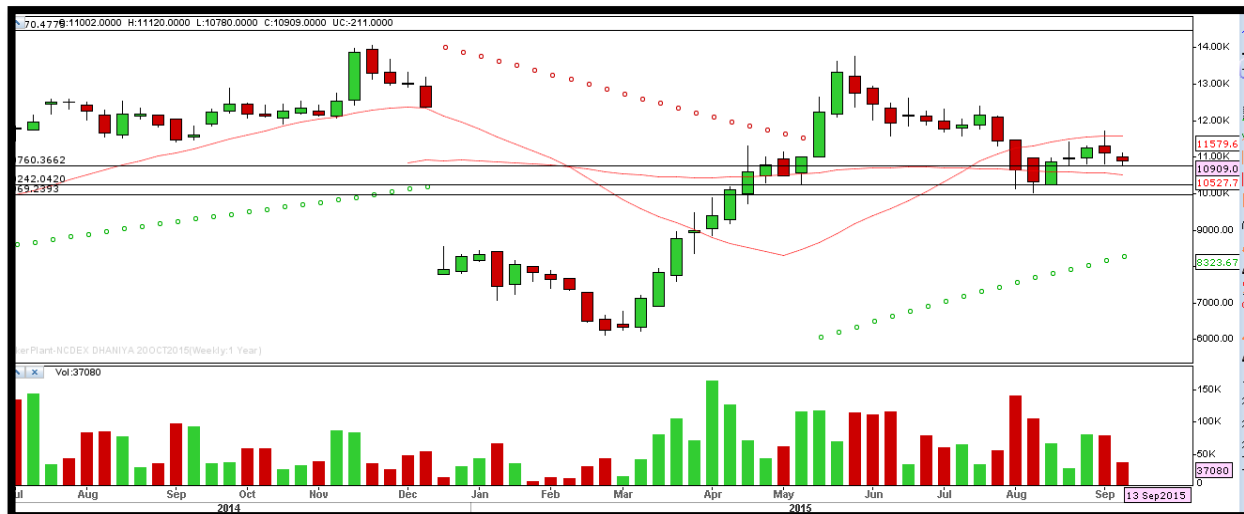
Trend: Consolidate

Resistance: 11280, 11360

Support: 11100, 11000

Strategy: Buy on dips

DHANIYA WEEKLY



JEERA

WEEKLY PIVOT

SCRIPT	R4	R3	R2	R1	P	S1	S2	S3	S4
JEERA	16775	16525	16275	16150	16025	15900	15775	15525	15275

OUTLOOK

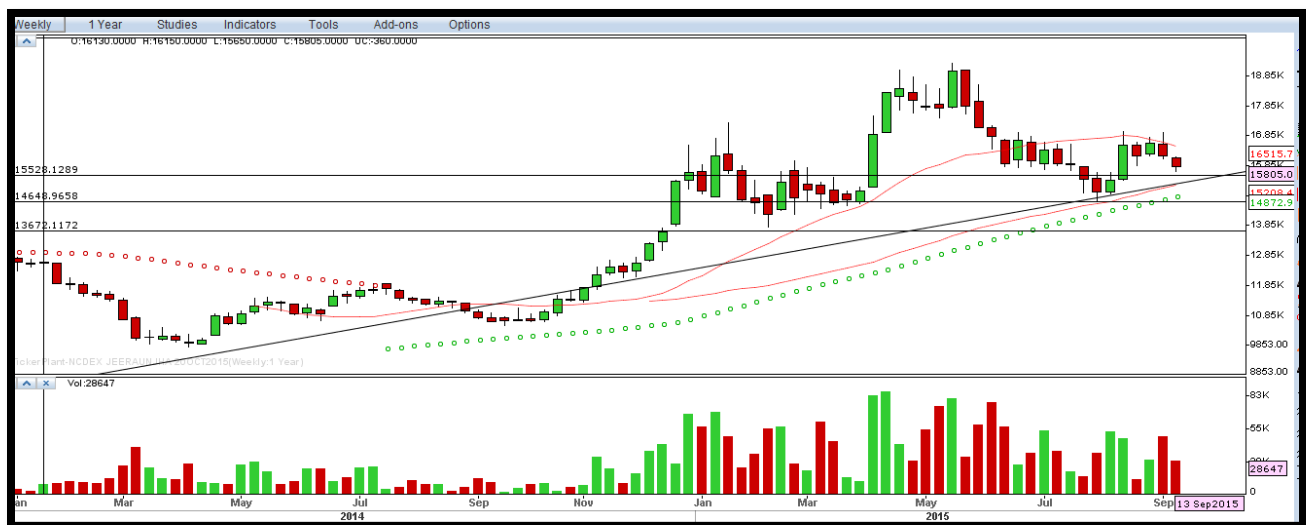
Trend: Consolidate

Resistance: 16150, 16280

Support: 15900, 15780

Strategy: Sell on highs

JEERA WEEKLY



TURMERIC

WEEKLY PIVOT

SCRIPT	R4	R3	R2	R1	P	S1	S2	S3	S4
TURMERIC	8016	7816	7616	7513	7416	7313	7216	7016	6816

OUTLOOK

Trend: Consolidate

Resistance: 7510, 7620

Support: 7320, 7210

Strategy: Sell on highs

TURMERIC WEEKLY



Disclaimer

The information and views in this report, our website & all the service we provide are believed to be reliable, but we do not accept any responsibility (or liability) for errors of fact or opinion. Users have the right to choose the product/s that suits them the most.

Sincere efforts have been made to present the right investment perspective. The information contained herein is based on analysis and up on sources that we consider reliable.

[This material is for personal information and based upon it & takes no responsibility](#)

The information given herein should be treated as only factor, while making investment decision. The report does not provide individually tailor-made investment advice. Money CapitalHeight Research investment advisors Pvt. Ltd. recommends that investors independently evaluate particular investments and strategies, and encourages investors to seek the advice of a financial adviser. Money CapitalHeight Research Pvt. Ltd. shall not be responsible for any transaction conducted based on the information given in this report, which is in violation of rules and regulations of NCDEX.

The commodity price projections shown are not necessarily indicative of future price performance. The information herein, together with all estimates and forecasts, can change without notice. Analyst or any person related to Money CapitalHeight Research investment advisors Pvt. Ltd. might be holding positions in the commodity recommended. It is understood that anyone who is browsing through the site has done so at his free will and does not read any views expressed as a recommendation for which either the site or its owners or anyone can be held responsible for. Any surfing and reading of the information is the acceptance of this disclaimer.

All Rights Reserved.

[Investment in Commodity and equity market has its own risks.](#)

We, however, do not vouch for the accuracy or the completeness thereof. [we are not responsible for any loss incurred whatsoever for any financial profits or loss which may arise from the recommendations above.](#) Money CapitalHeight Research investment advisors Pvt. Ltd. does not purport to be an invitation or an offer to buy or sell any financial instrument. [Our Clients \(Paid Or Unpaid\), Any third party or anyone else have no rights to forward or share our calls or SMS or Report or Any Information Provided by us to/with anyone which is received directly or indirectly by them. If found so then Serious Legal Actions can be taken.](#)