

# Weekly Newsletter-Equity

## 02/11/2015



# Weekly Newsletter

## Contents

- ▶ **Market Wrap**
- ▶ **Market Performance**
  - ▶ **NSE Gainers**
  - ▶ **NSE Losers**
  - ▶ **NIFTY 5 Days Up**
  - ▶ **Indian Equity Market**
  - ▶ **Index Watch**
  - ▶ **World Indices**
- ▶ **Technical Analysis**
  - ▶ **Nifty Future**
  - ▶ **Bank Nifty Future**

# MARKET WRAP

- ▶ Indian markets edged lower. Sensex & Nifty fall by **3.23%** and **2.77%**
- ▶ Wall Street ended upside. USD GDP (QoQ) (Q3) down 3.9% to **1.5%**
- ▶ Asia-Pacific markets closed negative. Federal Fiscal Deficit up 3692B to **3785B**.

**I**ndian indices move sideways during the week amid tracking weakness in global peers.

The rate of growth in the U.S. economy slowed sharply in the third quarter as a global weakness hit the world's largest economy. Gross domestic product grew just 1.5% in the three months to September, down from 3.9% in the second quarter. U.S. consumers drove growth in the last three months, with household spending up 3.2%.

**I**ndian indices consolidated on minor bearish trend. NSE revises lot-size of F&O contracts of 151 stocks, 8 indices. The central government has notched up a fiscal deficit of Rs 3.78 lakh cr., or 68.1% of its full year 2015-16 target, during the first six months (April-September) of the fiscal year. The government has received revenue of Rs 5.13 lakh cr. (45% of FY16 estimate) while total spending stood at Rs 9.11 lakh cr. (51.2%).

**W**orld markets struggle on downside during the week. USA, Asian and Euro markets mixed during the week. DAX and CAC closed negative by 0.19% and 1.06% each. FTSE100 index went down by 1.29%; S&P 500 closed positive by 1.38%; NASDAQ were up by 0.92%. In Asian market Nikkei went up by 1.37%. HangSeng went down by 2.21% & KLSE went down by 2.64%. Jakarta was fall by 4.25%, Straits Times down by 2.28% and Seoul closed on negative note by 0.54%.

# MARKET PERFORMANCE

## NSE GAINERS

Company Name	Current(Rs.)	Prev. Close (Rs.)	Change (Rs.)	Change (%)
Kotak Mahindra Bank	687.65	665.20	22.45	3.37
HCLTech	871.70	852.95	18.75	2.20
Dr. Reddy	4279.90	4188.40	91.50	2.18
Grasim Industries	3712.05	3647.45	64.60	1.77
Maruti Suzuki	4449.00	4380.90	68.10	1.55

## NSE LOSERS

Company Name	Current(Rs.)	Prev. Close (Rs.)	Change (Rs.)	Change (%)
Axis Bank	475.40	525.65	-50.25	-9.56
Bank of Baroda	160.20	173.10	-12.90	-7.45
Lupin	1928.90	2079.30	-150.40	-7.23
ITC	334.65	358.35	-23.70	-6.61
Larsen & Toubro	1410.75	1510.30	-99.55	-6.59

## NIFTY - 5 DAYS UP

Company Name	Current (Rs)	Prev. Close (Rs.)	Change (Rs.)	Change (%)
Maharashtra Scooters	1311.90	1022.25	289.65	28.33
Dalmia Bharat Sugar	64.85	51.35	13.50	26.29
Sanofi India	4550.15	4198.75	351.40	8.37
FAG Bearings India	4148.05	4024.55	123.50	3.07
ABB India	1238.05	1252.65	-14.60	-1.17

## INDIAN EQUITY MARKET

INDICES	VALUE	CHANGE	% CHANGE
NIFTY	8065.80	-229.65	<b>-2.77</b>
BANK NIFTY	17354.50	-579.55	<b>-3.23</b>
SENSEX	26656.83	-813.98	<b>-2.96</b>

## Index Watch

INDEX	23.10.2015	30.10.2015	W/W CHANGE	% RETURN
S&P CNX NIFTY	8295.45	8065.80	-229.65	<b>-2.77</b>
CNX NIFTY JR.	19943.05	19733.60	-209.45	<b>-1.05</b>
INDIA VIX	16.19	17.88	1.69	<b>10.42</b>
BANK NIFTY	17934.05	17354.50	-579.55	<b>-3.23</b>
CNX 100	8384.85	8175.85	-209.00	<b>-2.49</b>
S&P CNX 500	6913.05	6750.95	-162.10	<b>-2.34</b>
CNX MIDCAP	13428.20	13238.50	-189.70	<b>-1.41</b>
NIFTY MIDCAP 50	3381.20	3307.30	-73.90	<b>-2.19</b>
CNX INFRA	2953.75	2833.70	-120.05	<b>-4.06</b>
CNX IT	11552.00	11486.90	-65.10	<b>-0.56</b>
CNX REALTY	183.00	176.05	-6.95	<b>-3.80</b>
CNX METAL	1846.70	1806.05	-40.65	<b>-2.20</b>

# WORLD INDICES

Indices	Country	Date	Index	Net Change	Change (%)
<b>Asian Markets</b>					
Hang Seng	Hong Kong	30OCT15	22,640.04	-511.90	<b>-2.21</b>
Jakarta Composite	Indonesia	30OCT15	4,455.18	-197.97	<b>-4.25</b>
Nikkei 225	Japan	30OCT15	19,083.10	257.80	<b>1.37</b>
KLSE Composite	Malaysia	30OCT15	1,665.71	-45.22	<b>-2.64</b>
Straits Times	Singapore	30OCT15	2,998.35	-70.11	<b>-2.28</b>
Seoul Composite	South Korea	30OCT15	2,029.47	-10.93	<b>-0.54</b>
<b>European Markets</b>					
FTSE 100	United Kingdom	30OCT15	6,360.85	-83.23	<b>-1.29</b>
CAC 40	France	30OCT15	4,871.21	-52.43	<b>-1.06</b>
DAX	Germany	30OCT15	10,773.96	-20.58	<b>-0.19</b>
<b>U.S.A. Markets</b>					
Nasdaq	United States	30OCT15	5,078.25	46.39	<b>0.92</b>
DJIA	United States	30OCT15	17,707.50	242.50	<b>1.39</b>
S&P 500	United States	30OCT15	2,087.75	28.50	<b>1.38</b>

# TECHNICAL VIEW

## WEEKLY PIVOT

INDICES	R4	R3	R2	R1	P	S1	S2	S3	S4
NIFTY	9162	8835	8508	8296	8181	7969	7854	7527	7200

## OUTLOOK

**Trend: - Consolidated**

**Resistance: - 8300, 8520**

**Support: - 7950, 7825**

**Strategy: - Buy on dips**

### NIFTY WEEKLY



## BANK NIFTY

### WEEKLY PIVOT

SCRIPT	R4	R3	R2	R1	P	S1	S2	S3	S4
BANK NIFTY	20015	19196	18377	17894	17558	17075	16739	15920	15101

### OUTLOOK

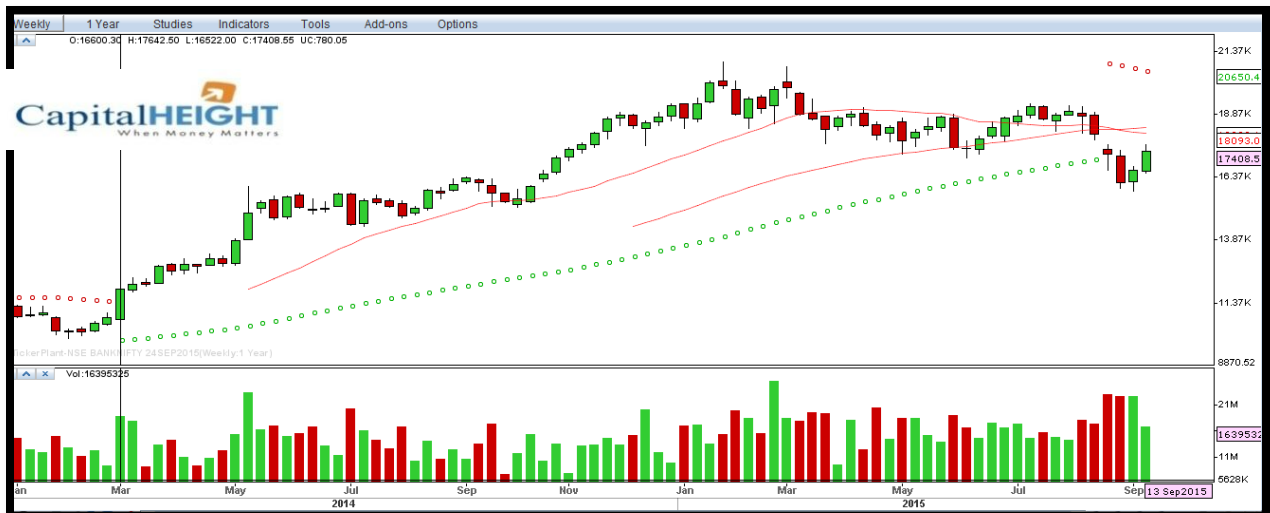
**Trend: - Consolidated**

**Resistance: - 17900, 18400**

**Support: - 17050, 16730**

**Strategy: - Buy on dips**

### BANK NIFTY WEEKLY





# Disclaimer

The information and views in this report, our website & all the service we provide are believed to be reliable, but we do not accept any responsibility (or liability) for errors of fact or opinion. Users have the right to choose the product/s that suits them the most.

Sincere efforts have been made to present the right investment perspective. The information contained herein is based on analysis and up on sources that we consider reliable.

**This material is for personal information and based upon it & takes no responsibility**

The information given herein should be treated as only factor, while making investment decision. The report does not provide individually tailor-made investment advice. Money CapitalHeight Research investment advisors Pvt. Ltd. recommends that investors independently evaluate particular investments and strategies, and encourages investors to seek the advice of a financial adviser. Money CapitalHeight Research investment advisors Pvt. Ltd. shall not be responsible for any transaction conducted based on the information given in this report, which is in violation of rules and regulations of NSE and BSE.

The share price projections shown are not necessarily indicative of future price performance. The information herein, together with all estimates and forecasts, can change without notice. Analyst or any person related to Money CapitalHeight Research Pvt. Ltd. might be holding positions in the stocks recommended. It is understood that anyone who is browsing through the site has done so at his free will and does not read any views expressed as a recommendation for which either the site or its owners or anyone can be held responsible for. Any surfing and reading of the information is the acceptance of this disclaimer.

All Rights Reserved.

Investment in Commodity and equity market has its own risks.

We, however, do not vouch for the accuracy or the completeness thereof. **we are not responsible for any loss incurred whatsoever for any financial profits or loss which may arise from the recommendations above.** Money CapitalHeight Research investment advisors Pvt. Ltd. does not purport to be an invitation or an offer to buy or sell any financial instrument. **Our Clients (Paid Or Unpaid), Any third party or anyone else have no rights to forward or share our calls or SMS or Report or Any Information Provided by us to/with anyone which is received directly or indirectly by them. If found so then Serious Legal Actions can be taken.**