

# Weekly Newsletter-Equity

09/11/2015



# Weekly Newsletter

## Contents

- ▶ **Market Wrap**
- ▶ **Market Performance**
  - ▶ **NSE Gainers**
  - ▶ **NSE Losers**
  - ▶ **NIFTY 5 Days Up**
  - ▶ **Indian Equity Market**
  - ▶ **Index Watch**
  - ▶ **World Indices**
- ▶ **Technical Analysis**
  - ▶ **Nifty Future**
  - ▶ **Bank Nifty Future**

# MARKET WRAP

- ▶ Indian markets edged lower. Sensex & Nifty down by **1.47%** and **1.38%**
- ▶ Wall Street ended flat. USD Unemployment Rate (Oct) comes 5.1% to **5.0%**.
- ▶ Asia-Pacific markets closed positive. INR Infrastructure output (YoY)(Sep) up **0.8%**

**I**ndian indices move downward during the week amid weakness in Indian currencies.

The dollar rose against other major currencies on Friday, maintaining gains that followed the release of data showing the U.S. economy created far more jobs than expected in October. Nonfarm payrolls increased 271,000 last month, the largest rise since December and a far cry from the 142,000 and 136,000 jobs numbers seen in September and August.

**I**ndian indices consolidated on minor bearish trend. The US Federal Reserve commentary is a lot more impactful for the markets because of its global nature than the Bihar Election climate. The Fed last week opened the door to a rate increase in December. On other hand government on Friday night hiked excise duty on petrol by Rs 1.60 per liter and the same on diesel by 40 paise a liter to additional revenue to meet budgetary targets.

**W**orld markets trend bullish during the week. USA, Asian and Euro markets were recover on positive note during the week. DAX and CAC closed positive by 1.99% and 2.32% each. FTSE100 index went down by 0.11%; S&P 500 closed positive by 0.38%; NASDAQ were up by 1.36%. In Asian market Nikkei went up by 0.96%. HangSeng went up by 1% & KLSE went up by 1.20%. Jakarta was up by 2.5%, Straits Times up by 0.40% and Seoul closed on positive note by 0.57%.

# MARKET PERFORMANCE

## NSE GAINERS

Company Name	Current(Rs.)	Prev. Close (Rs.)	Change (Rs.)	Change (%)
Coal India	342.20	319.90	22.30	6.97
M&M	1249.55	1183.60	65.95	5.57
Bank of Baroda	167.05	160.20	6.85	4.28
Punjab National Bank	132.90	128.35	4.55	3.54
Tata Motors	396.15	384.95	11.20	2.91

## NSE LOSERS

Company Name	Current(Rs.)	Prev. Close (Rs.)	Change (Rs.)	Change (%)
Dr. Reddy's Lab	3630.65	4279.90	-649.25	-15.17
Tata Steel	220.25	246.60	-26.35	-10.69
Sun Pharma	803.40	889.55	-86.15	-9.68
Vedanta	92.20	99.95	-7.75	-7.75
GAIL (India)	288.15	308.45	-20.30	-6.58

## NIFTY - 5 DAYS UP

Company Name	Current (Rs)	Prev. Close (Rs.)	Change (Rs.)	Change (%)
GM Breweries	755.00	654.75	100.25	15.31
Container Corp	1404.10	1325.15	78.95	5.96
Steel Strips Wheels	372.05	354.65	17.40	4.91
Neyveli Lignite	80.60	79.95	0.65	0.81
Mahindra Life. Dev	491.55	497.75	-6.20	-1.25

## INDIAN EQUITY MARKET

INDICES	VALUE	CHANGE	% CHANGE
NIFTY	7954.30	-111.50	<b>-1.38</b>
BANK NIFTY	17086.50	-268.00	<b>-1.54</b>
SENSEX	26265.24	-391.59	<b>-1.47</b>

## Index Watch

INDEX	30.10.2015	06.11.2015	W/W CHANGE	% CHANGE
S&P CNX NIFTY	8065.80	7954.30	-111.50	<b>-1.38</b>
CNX NIFTY JR.	19733.60	19561.75	-171.85	<b>-0.87</b>
INDIA VIX	17.88	19.47	1.59	<b>8.91</b>
BANK NIFTY	17354.50	17086.50	-268.00	<b>-1.54</b>
CNX 100	8175.85	8069.60	-106.25	<b>-1.30</b>
S&P CNX 500	6750.95	6650.10	-100.85	<b>-1.49</b>
CNX MIDCAP	13238.50	12995.70	-242.80	<b>-1.83</b>
NIFTY MIDCAP 50	3307.30	3210.50	-96.80	<b>-2.93</b>
CNX INFRA	2833.70	2775.85	-57.85	<b>-2.04</b>
CNX IT	11486.90	11485.45	-1.45	<b>-0.01</b>
CNX REALTY	176.05	172.50	-3.55	<b>-2.02</b>
CNX METAL	1806.05	1720.25	-85.80	<b>-4.75</b>

# WORLD INDICES

Indices	Country	Date	Index	Net Change	Change (%)
<b>Asian Markets</b>					
Hang Seng	Hong Kong	06NOV15	22,867.33	227.29	1.00
Jakarta Composite	Indonesia	06NOV15	4,566.55	111.37	2.50
Nikkei 225	Japan	06NOV15	19,265.60	182.50	0.96
KLSE Composite	Malaysia	06NOV15	1,685.70	19.99	1.20
Straits Times	Singapore	06NOV15	3,010.47	12.12	0.40
Seoul Composite	South Korea	06NOV15	2,041.07	11.60	0.57
<b>European Markets</b>					
FTSE 100	United Kingdom	06NOV15	6,353.83	-7.02	-0.11
CAC 40	France	06NOV15	4,984.15	112.94	2.32
DAX	Germany	06NOV15	10,988.03	214.07	1.99
<b>U.S.A. Markets</b>					
Nasdaq	United States	06NOV15	5,147.12	68.87	1.36
DJIA	United States	06NOV15	17,807.50	100.00	0.56
S&P 500	United States	06NOV15	2,095.75	8.00	0.38

# TECHNICAL VIEW

## WEEKLY PIVOT

INDICES	R4	R3	R2	R1	P	S1	S2	S3	S4
NIFTY	8617	8419	8221	8099	8023	7901	7825	7627	7429

## OUTLOOK

**Trend: - Consolidated**

**Resistance: - 8080, 8250**

**Support: - 7870, 7788**

**Strategy: - Buy on dips**

### NIFTY WEEKLY



## BANK NIFTY

### WEEKLY PIVOT

SCRIPT	R4	R3	R2	R1	P	S1	S2	S3	S4
BANK NIFTY	18856	18312	17768	17467	17224	16923	16680	16136	15592

### OUTLOOK

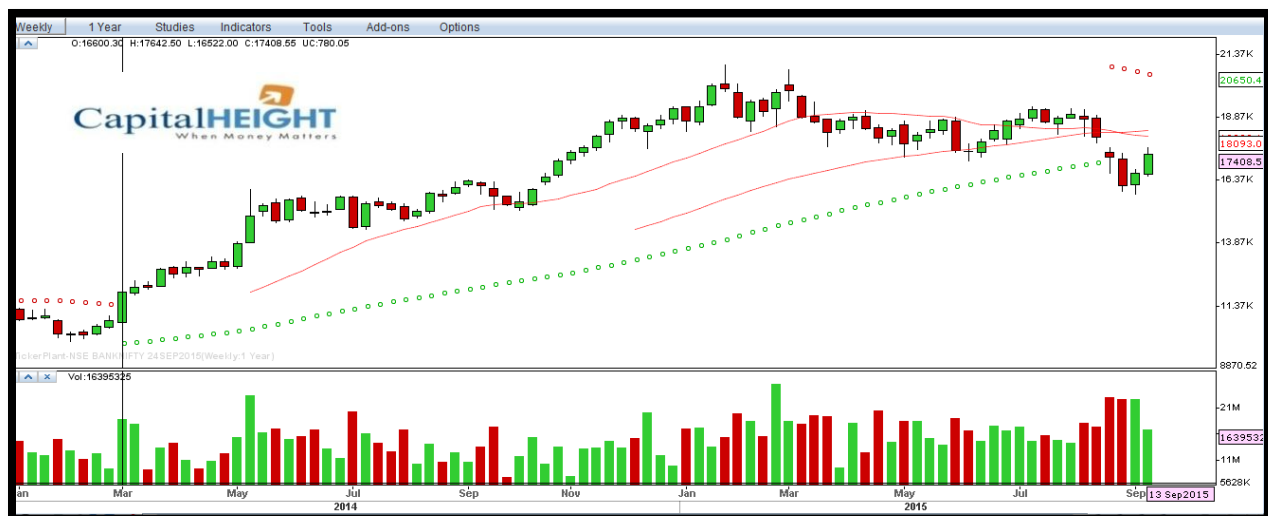
**Trend: - Consolidated**

**Resistance: - 17490, 17870**

**Support: - 16780, 16320**

**Strategy: - Buy on dips**

### BANK NIFTY WEEKLY





# Disclaimer

The information and views in this report, our website & all the service we provide are believed to be reliable, but we do not accept any responsibility (or liability) for errors of fact or opinion. Users have the right to choose the product/s that suits them the most.

Sincere efforts have been made to present the right investment perspective. The information contained herein is based on analysis and up on sources that we consider reliable.

**This material is for personal information and based upon it & takes no responsibility**

The information given herein should be treated as only factor, while making investment decision. The report does not provide individually tailor-made investment advice. Money CapitalHeight Research investment advisors Pvt. Ltd. recommends that investors independently evaluate particular investments and strategies, and encourages investors to seek the advice of a financial adviser. Money CapitalHeight Research investment advisors Pvt. Ltd. shall not be responsible for any transaction conducted based on the information given in this report, which is in violation of rules and regulations of NSE and BSE.

The share price projections shown are not necessarily indicative of future price performance. The information herein, together with all estimates and forecasts, can change without notice. Analyst or any person related to Money CapitalHeight Research Pvt. Ltd. might be holding positions in the stocks recommended. It is understood that anyone who is browsing through the site has done so at his free will and does not read any views expressed as a recommendation for which either the site or its owners or anyone can be held responsible for. Any surfing and reading of the information is the acceptance of this disclaimer.

All Rights Reserved.

Investment in Commodity and equity market has its own risks.

We, however, do not vouch for the accuracy or the completeness thereof. **we are not responsible for any loss incurred whatsoever for any financial profits or loss which may arise from the recommendations above.** Money CapitalHeight Research investment advisors Pvt. Ltd. does not purport to be an invitation or an offer to buy or sell any financial instrument. **Our Clients (Paid Or Unpaid), Any third party or anyone else have no rights to forward or share our calls or SMS or Report or Any Information Provided by us to/with anyone which is received directly or indirectly by them. If found so then Serious Legal Actions can be taken.**