

Weekly Newsletter-Equity

23/11/2015



Weekly Newsletter

Contents

- ▶ **Market Wrap**
- ▶ **Market Performance**
 - ▶ **NSE Gainers**
 - ▶ **NSE Losers**
 - ▶ **NIFTY 5 Days Up**
 - ▶ **Indian Equity Markets**
 - ▶ **Index Watch**
 - ▶ **World Indices**
- ▶ **Technical Analysis**
 - ▶ **Nifty Future**
 - ▶ **Bank Nifty Future**

MARKET WRAP

- ▶ Indian markets edged up. Sensex & Nifty up by **1.01%** and **1.21%**
- ▶ Wall Street ended flat. USD Core CPI (MoM) (Oct) comes **0.2%**.
- ▶ Asia-Pacific markets closed positive. India WPI Inflation (YoY)(Oct) **-3.81%**

Indian indices recover from support level amid strength in Indian currency and bet the US Federal Reserve sentiments. A slew of policy announcement by the government after Wednesday's market close also boosted investor sentiment. Recovering from a 2month low, the Sensex ended at up 359 points the biggest advance since oct5. The much-awaited 7th pay commission has proposed a 23.55% hike in emolument, including pay, allowances and pension for 4.8m government employee and 5.5m pensioners.

Indian indices remained in consolidated mode between 7720-7790 range and closed on weak note so week ahead again market is likely to go down if Nifty sustains below 7850 level but sustaining above 7900 level may lead a bullish rally. Dropping of general Wholesale Price (WPI) in Oct. for 12th straight month in oct. masked the fact that some food items have seen a surge in inflation since Nov. last year. The downward spiral in wholesale price index has been characterized by ebbing weak domestic demand.

World markets trend moves up during the week. USA, Asian and Euro markets were recover on positive note during the week. DAX and CAC closed positive by 3.84% and 2.14% each. FTSE100 index went up by 3.54%; S&P 500 closed positive by 3.18%; NASDAQ were up by 3.57%. In Asian market Nikkei went up by 1.44%. HangSeng went down by 2.74% & KLSE went up by 0.18%. Jakarta was up by 1.98%, Straits Times down by 0.27% and Seoul closed on positive note by 0.84%.

MARKET PERFORMANCE

NSE GAINERS

Company Name	Current(Rs.)	Prev. Close (Rs.)	Change (Rs.)	Change (%)
GAIL	349.55	282.00	67.55	23.95
Vedanta	93.15	87.25	5.90	6.76
Mah&Mah	1315.25	1251.40	63.85	5.10
ZEEL	396.30	377.35	18.95	5.02
Cairn India	137.05	130.70	6.35	4.86

NSE LOSERS

Company Name	Current(Rs.)	Prev. Close (Rs.)	Change (Rs.)	Change (%)
Axis Bank	459.85	484.95	-25.10	-5.18
Infosys	1052.40	1100.80	-48.40	-4.40
Tata Power	66.65	68.30	-1.65	-2.42
Hero MotoCorp	2562.85	2615.40	-52.55	-2.01
Sun Pharma	725.85	740.60	-14.75	-1.99

NIFTY - 5 DAYS UP

Company Name	Current (Rs)	Prev. Close (Rs.)	Change (Rs.)	Change (%)
Ester Inds	79.15	62.30	16.85	27.05
Kalyani Steels	153.85	140.65	13.20	9.38
Max India	576.55	531.60	44.95	8.46
Rain Industries	40.00	38.40	1.60	4.17
Chambal Fert - Chem	57.90	56.05	1.85	3.30

INDIAN EQUITY MARKET

INDICES	VALUE	CHANGE	% CHANGE
NIFTY FUTURE	7850.95	76.65	0.99
BANK NIFTY FUTURE	17059.00	100.85	0.59
SENSEX	25868.59	258.06	1.01

Index Watch

INDEX	13.11.2015	20.11.2015	W/W CHANGE	% CHANGE
S&P CNX NIFTY	7762.25	7856.55	94.30	1.21
CNX NIFTY JR.	19268.90	19534.75	265.85	1.38
INDIA VIX	17.65	15.90	-1.75	-9.93
BANK NIFTY	17932.85	17055.60	-877.25	-4.89
CNX 100	7886.90	7984.85	97.95	1.24
S&P CNX 500	6526.60	6615.65	89.05	1.36
CNX MIDCAP	12885.95	13089.90	203.95	1.58
NIFTY MIDCAP 50	3220.10	3312.20	92.10	2.86
CNX INFRA	2687.35	2744.35	57.00	2.12
CNX IT	11102.45	11118.85	16.40	0.15
CNX REALTY	166.55	163.85	-2.70	-1.62
CNX METAL	1704.05	1726.10	22.05	1.29

WORLD INDICES

Indices	Country	Date	Index	Net Change	Change (%)
Asian Markets					
Hang Seng	Hong Kong	20NOV15	22,754.72	-641.42	-2.74
Jakarta Composite	Indonesia	20NOV15	4,561.33	88.50	1.98
Nikkei 225	Japan	20NOV15	19,879.81	282.90	1.44
KLSE Composite	Malaysia	20NOV15	1,661.89	2.98	0.18
Straits Times	Singapore	20NOV15	2,917.91	-7.77	-0.27
Seoul Composite	South Korea	20NOV15	1,989.86	16.57	0.84
European Markets					
FTSE 100	United Kingdom	20NOV15	6,334.63	216.35	3.54
CAC 40	France	20NOV15	4,910.97	103.02	2.14
DAX	Germany	20NOV15	11,119.83	411.43	3.84
U.S.A. Markets					
Nasdaq	United States	20NOV15	5,103.97	176.07	3.57
DJIA	United States	20NOV15	17,765.00	519.76	3.01
S&P 500	United States	20NOV15	2,082.75	64.25	3.18

TECHNICAL VIEW

WEEKLY PIVOT

INDICES	R4	R3	R2	R1	P	S1	S2	S3	S4
NIFTY	8430	8231	8032	7941	7833	7742	7634	7435	7236

OUTLOOK

Trend: - Consolidated

Resistance: - 7950, 8090

Support: - 7700, 7610

Strategy: - Buy on dips

NIFTY WEEKLY



BANK NIFTY

WEEKLY PIVOT

SCRIPT	R4	R3	R2	R1	P	S1	S2	S3	S4
BANK NIFTY	18751	18188	17625	17338	17062	16775	16499	15936	15373

OUTLOOK

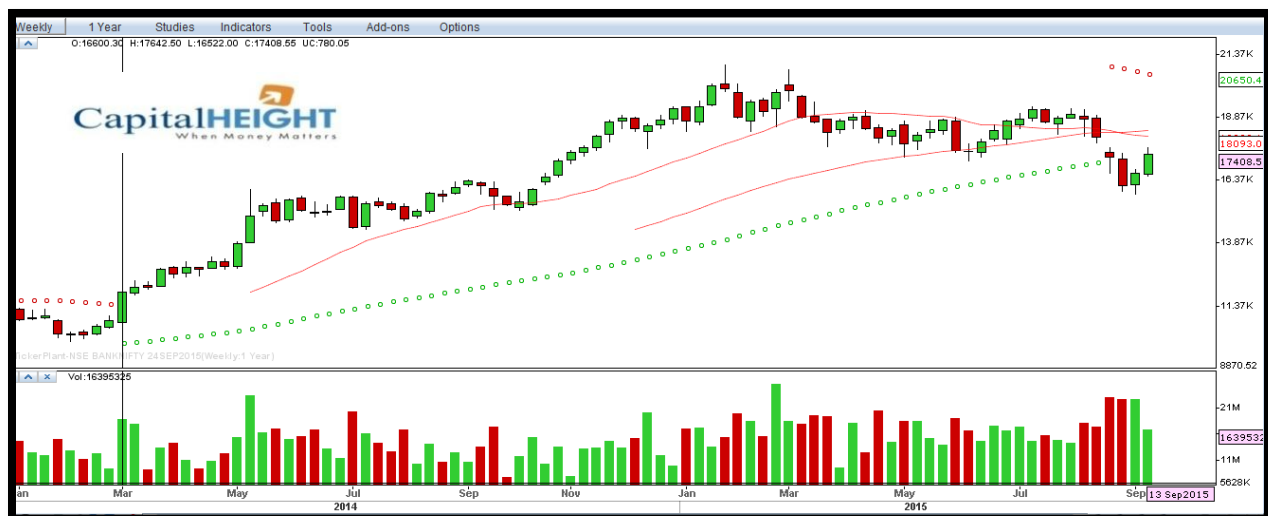
Trend: - Consolidated

Resistance: - 17160, 17530

Support: - 16640, 16310

Strategy: - Buy on dips

BANK NIFTY WEEKLY



Disclaimer

The information and views in this report, our website & all the service we provide are believed to be reliable, but we do not accept any responsibility (or liability) for errors of fact or opinion. Users have the right to choose the product/s that suits them the most.

Sincere efforts have been made to present the right investment perspective. The information contained herein is based on analysis and up on sources that we consider reliable.

This material is for personal information and based upon it & takes no responsibility

The information given herein should be treated as only factor, while making investment decision. The report does not provide individually tailor-made investment advice. Money CapitalHeight Research investment advisors Pvt. Ltd. recommends that investors independently evaluate particular investments and strategies, and encourages investors to seek the advice of a financial adviser. Money CapitalHeight Research investment advisors Pvt. Ltd. shall not be responsible for any transaction conducted based on the information given in this report, which is in violation of rules and regulations of NSE and BSE.

The share price projections shown are not necessarily indicative of future price performance. The information herein, together with all estimates and forecasts, can change without notice. Analyst or any person related to Money CapitalHeight Research Pvt. Ltd. might be holding positions in the stocks recommended. It is understood that anyone who is browsing through the site has done so at his free will and does not read any views expressed as a recommendation for which either the site or its owners or anyone can be held responsible for. Any surfing and reading of the information is the acceptance of this disclaimer.

All Rights Reserved.

Investment in Commodity and equity market has its own risks.

We, however, do not vouch for the accuracy or the completeness thereof. **we are not responsible for any loss incurred whatsoever for any financial profits or loss which may arise from the recommendations above.** Money CapitalHeight Research investment advisors Pvt. Ltd. does not purport to be an invitation or an offer to buy or sell any financial instrument. **Our Clients (Paid Or Unpaid), Any third party or anyone else have no rights to forward or share our calls or SMS or Report or Any Information Provided by us to/with anyone which is received directly or indirectly by them. If found so then Serious Legal Actions can be taken.**