

Weekly Newsletter-Equity

28/12/2015



Weekly Newsletter

Contents

- ▶ **Market Wrap**
- ▶ **Market Performance**
 - ▶ **NSE Gainers**
 - ▶ **NSE Losers**
 - ▶ **NIFTY 5 Days Up**
 - ▶ **Indian Equity Market**
 - ▶ **Index Watch**
 - ▶ **World Indices**
- ▶ **Technical Analysis**
 - ▶ **Nifty Future**
 - ▶ **Bank Nifty Future**

MARKET WRAP

- ▶ Indian markets edged down. Sensex & Nifty up by **1.25%** and **1.28%**
- ▶ Wall Street ended up. USA GDP (QoQ)(Q3) came **2.0%**.
- ▶ Asia-Pacific markets closed up. INR Fx reserves USD come **351.11B**.

Indian indices moved in bullish trend during the week on the back of global sentiments.

The number of America filling for unemployment benefits fell more than expected last week, nearing a 42-year low as labour market condition continued to tighten in a boost to economy. Initial claims for state unemployment benefits claim for state unemployment benefits dropped 5000 to seasonally adjusted 267000 for the week ended Dec. 19, not far from levels last seen in late 1973.

Indian indices remained positive during the week but closed down on Friday. The rupee saw volatility in the week ended Dec 18. The currency has dropped to about 67 to a dollar. The Reserve Bank of India sold \$1.4 billion in the secondary market in the week when the US Federal Reserve raised its policy rate by 25 basis points, data from RBI showed. India total reserves, as on 18 Dec, stood at about \$351.1 billion, down from \$352.5 billion.

World markets trend moves bullish during the week. USA, Asian and Euro markets were consolidate on positive note during the week. DAX and CAC closed positive by 1.13% and 0.82% each. FTSE100 index went up by 3.34%; S&P 500 closed positive by 1.33%; NASDAQ were up by 2.11%. In Asian market Nikkei went down by 1.15%. HangSeng went up by 1.76% & KLSE went up by 1.19%. Jakarta was up by 1.21%, Straits Times up by 0.87% and Seoul closed on positive note by 0.78%.

MARKET PERFORMANCE

NSE GAINERS

Company Name	Current(Rs.)	Prev. Close (Rs.)	Change (Rs.)	Change (%)
Vedanta	91.95	84.30	7.65	9.07
Hindalco Indus	85.25	79.90	5.35	6.70
GAIL	362.20	339.65	22.55	6.64
Cairn India	138.65	130.20	8.45	6.49
Bharti Airtel	338.45	319.05	19.40	6.08

NSE LOSERS

Company Name	Current(Rs.)	Prev. Close (Rs.)	Change (Rs.)	Change (%)
Punjab National Bank	120.10	122.00	-1.90	-1.56
Tech Mahindra Ltd.	516.95	523.25	-6.30	-1.20
Adani Ports SEZ	258.10	260.20	-2.10	-0.81
ZEE Ltd.	410.75	413.55	-2.80	-0.68
Maruti Suzuki	4598.40	4620.45	-22.05	-0.48

NIFTY - 5 DAYS UP

Company Name	Current (Rs)	Prev. Close (Rs.)	Change (Rs.)	Change (%)
Indo Rama Synth	32.75	29.60	3.15	10.64
Bharat Electronics	1317.15	1233.60	83.55	6.77
HCC	26.20	24.65	1.55	6.29
Kirloskar Industries	629.00	600.25	28.75	4.79
Esab india	647.65	620.35	27.30	4.40

INDIAN EQUITY MARKET

INDICES	VALUE	CHANGE	% CHANGE
NIFTY FUTURE	7874.00	89.00	1.14
BANK NIFTY FUTURE	16845.00	198.00	1.19
SENSEX	25839.00	320.00	1.25

Index Watch

INDEX	18.12.2015	14.12.2015	W/W CHANGE	% CHANGE
S&P CNX NIFTY	7761.95	7861.05	99.10	1.28
CNX NIFTY JR.	19593.85	19785.15	191.30	0.98
INDIA VIX	14.49	13.75	-0.75	-5.16
BANK NIFTY	16594.30	16811.00	216.70	1.31
CNX 100	7908.50	8005.55	97.05	1.23
S&P CNX 500	6570.80	6656.75	85.95	1.31
CNX MIDCAP	13177.90	13337.35	159.45	1.21
NIFTY MIDCAP 50	3315.90	3366.70	50.80	1.53
CNX INFRA	2677.05	2745.90	68.85	2.57
CNX IT	11122.50	11184.90	62.40	0.56
CNX REALTY	167.75	170.90	3.15	1.88
CNX METAL	1772.70	1835.85	63.15	3.56

WORLD INDICES

Indices	Country	Date	Index	Net Change	Change (%)
Asian Markets					
Hang Seng	Hong Kong	24DEC15	22,138.13	382.57	1.76
Jakarta Composite	Indonesia	24DEC15	4,522.65	54.00	1.21
Nikkei 225	Japan	24DEC15	18,769.06	-217.74	-1.15
KLSE Composite	Malaysia	24DEC15	1,663.51	19.61	1.19
Straits Times	Singapore	24DEC15	2,877.62	24.78	0.87
Seoul Composite	South Korea	24DEC15	1,990.65	15.33	0.78
European Markets					
FTSE 100	United Kingdom	24DEC15	6,254.64	202.22	3.34
CAC 40	France	24DEC15	4,663.18	37.92	0.82
DAX	Germany	24DEC15	10,727.64	119.45	1.13
U.S.A. Markets					
Nasdaq	United States	24DEC15	5,048.49	104.19	2.11
DJIA	United States	24DEC15	17,505.00	122.50	0.70
S&P 500	United States	24DEC15	2,054.00	27.00	1.33

TECHNICAL VIEW

WEEKLY PIVOT

INDICES	R4	R3	R2	R1	P	S1	S2	S3	S4
NIFTY	8040	7981	7922	7898	7863	7839	7804	7745	7686

OUTLOOK

Trend: - Consolidated

Resistance: - 8030, 8350

Support: - 7805, 7620

Strategy: - Buy on dips

NIFTY WEEKLY



BANK NIFTY

WEEKLY PIVOT

SCRIPT	R4	R3	R2	R1	P	S1	S2	S3	S4
BANK NIFTY	17795	17462	17129	16987	16796	16654	16463	16130	15797

OUTLOOK

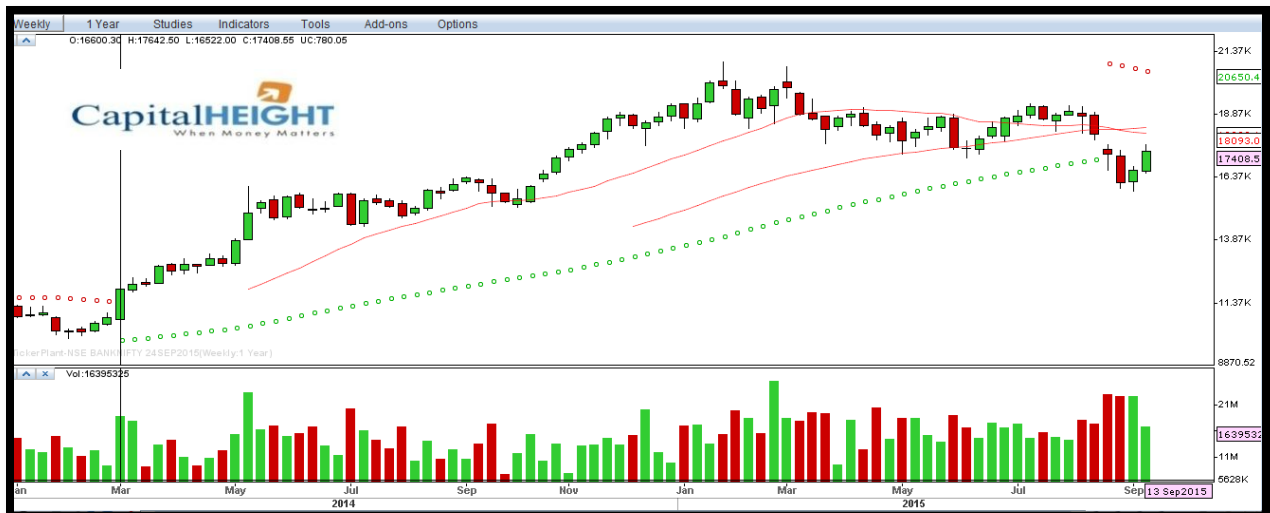
Trend: - Consolidated

Resistance: - 17090, 17600

Support: - 16616, 15885

Strategy: - Buy on dips

BANK NIFTY WEEKLY



Disclaimer

The information and views in this report, our website & all the service we provide are believed to be reliable, but we do not accept any responsibility (or liability) for errors of fact or opinion. Users have the right to choose the product/s that suits them the most.

Sincere efforts have been made to present the right investment perspective. The information contained herein is based on analysis and up on sources that we consider reliable.

This material is for personal information and based upon it & takes no responsibility

The information given herein should be treated as only factor, while making investment decision. The report does not provide individually tailor-made investment advice. Money CapitalHeight Research investment advisors Pvt. Ltd. recommends that investors independently evaluate particular investments and strategies, and encourages investors to seek the advice of a financial adviser. Money CapitalHeight Research investment advisors Pvt. Ltd. shall not be responsible for any transaction conducted based on the information given in this report, which is in violation of rules and regulations of NSE and BSE.

The share price projections shown are not necessarily indicative of future price performance. The information herein, together with all estimates and forecasts, can change without notice. Analyst or any person related to Money CapitalHeight Research Pvt. Ltd. might be holding positions in the stocks recommended. It is understood that anyone who is browsing through the site has done so at his free will and does not read any views expressed as a recommendation for which either the site or its owners or anyone can be held responsible for. Any surfing and reading of the information is the acceptance of this disclaimer.

All Rights Reserved.

Investment in Commodity and equity market has its own risks.

We, however, do not vouch for the accuracy or the completeness thereof. **we are not responsible for any loss incurred whatsoever for any financial profits or loss which may arise from the recommendations above.** Money CapitalHeight Research investment advisors Pvt. Ltd. does not purport to be an invitation or an offer to buy or sell any financial instrument. **Our Clients (Paid Or Unpaid), Any third party or anyone else have no rights to forward or share our calls or SMS or Report or Any Information Provided by us to/with anyone which is received directly or indirectly by them. If found so then Serious Legal Actions can be taken.**