

# Weekly Newsletter-Agri Commodity

8/02/2016



  
**CapitalHEIGHT**  
When Money Matters

[www.capitalheight.com](http://www.capitalheight.com)

# Weekly News Letter-Agri

## Contents

- ▶ **Market Wrap**
  - ▶ Chana
  - ▶ Dhaniya
  - ▶ Jeera
  - ▶ Turmeric
- ▶ **Technical Analysis**
  - ▶ Chana
  - ▶ Dhaniya
  - ▶ Jeera
  - ▶ Turmeric

# MARKET WRAP

## CHANA

- ▶ Chana future closed on down side on Friday after witnessing bearish movement for the entire week.
- ▶ Chana future can face strong selling from psychological level of 4000 and selling is expected for from higher level continuing channel formation.

## DHANIYA

- ▶ Dhaniya future witnessed bearish movement for the entire week and closed on up side.
- ▶ Dhaniya future has made a recovery in weekly chart so selling might be seen on Monday but buying is expected from lower levels.

## JEERA

- ▶ Jeera future bottomed out and closed on bullish note on Friday so further buying is expected in next week.
- ▶ There is strong weekly trend rebound and resistance level at 135850 but if it crosses that level 13700 than bullish rally can be expected in near term.

## TURMERIC

- ▶ Turmeric future witnessed bearish movement for the entire week and closed on mixed note.
- ▶ In weekly chart Turmeric is following trend line support so again selling might be seen from higher levels.

# TECHNICAL VIEW

## CHANA

### WEEKLY PIVOT

SCRIPT	R4	R3	R2	R1	P	S1	S2	S3	S4
CHANA	4575	4414	4253	4164	4092	4003	3931	3770	3609

### OUTLOOK

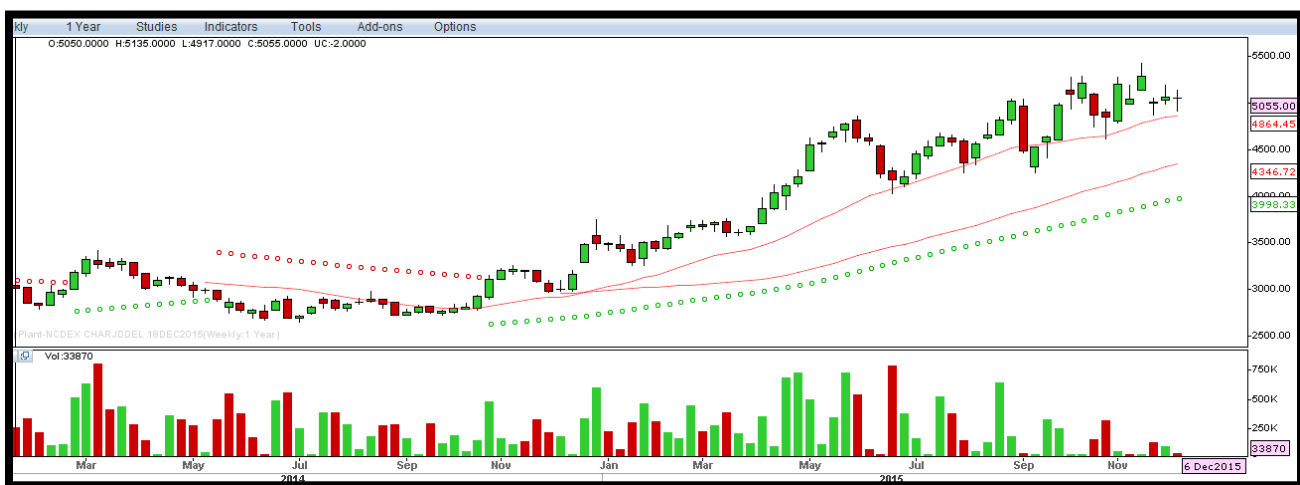
**Trend: Consolidate**

**Resistance: 4255, 4490**

**Support: 4015, 3740**

**Strategy: Sell on high**

### CHANA WEEKLY



## DHANIYA

### WEEKLY PIVOT

SCRIPT	R4	R3	R2	R1	P	S1	S2	S3	S4
DHANIYA	7138	6858	6578	6447	6298	6167	6018	5738	5458

### OUTLOOK

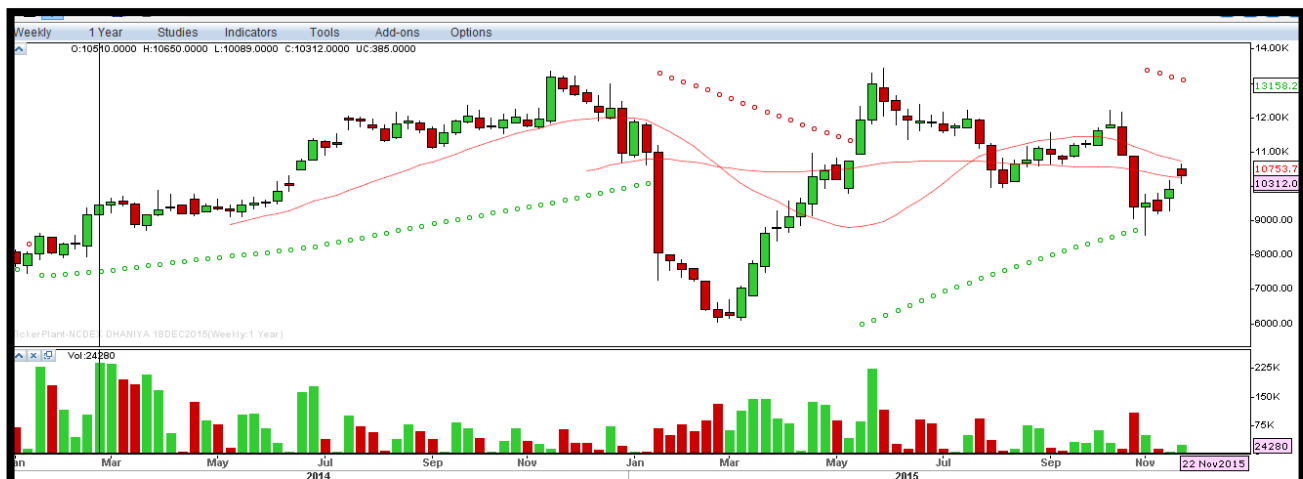
**Trend: Bearish**

**Resistance: 6635, 7340**

**Support: 6035, 5350**

**Strategy: Sell on high**

### DHANIYA WEEKLY



# JEERA

## WEEKLY PIVOT

SCRIPT	R4	R3	R2	R1	P	S1	S2	S3	S4
JEERA	16135	15255	14375	13980	13495	13100	12615	11735	10855

## OUTLOOK

**Trend: Consolidate**

**Resistance: 13855, 14375**

**Support: 12980, 12285**

**Strategy: Buy on dips**

## JEERA WEEKLY



# TURMERIC

## WEEKLY PIVOT

SCRIPT	R4	R3	R2	R1	P	S1	S2	S3	S4
TURMERIC	9950	9456	8962	8747	8468	8253	7974	7480	6986

## OUTLOOK

**Trend: Consolidate**

**Resistance: 8790, 9375**

**Support: 8045, 7515**

**Strategy: Sell on highs**

## TURMERIC WEEKLY



# Disclaimer

The information and views in this report, our website & all the service we provide are believed to be reliable, but we do not accept any responsibility (or liability) for errors of fact or opinion. Users have the right to choose the product/s that suits them the most.

Sincere efforts have been made to present the right investment perspective. The information contained herein is based on analysis and up on sources that we consider reliable.

[This material is for personal information and based upon it & takes no responsibility](#)

The information given herein should be treated as only factor, while making investment decision. The report does not provide individually tailor-made investment advice. Money CapitalHeight Research investment advisors Pvt. Ltd. recommends that investors independently evaluate particular investments and strategies, and encourages investors to seek the advice of a financial adviser. Money CapitalHeight Research Pvt. Ltd. shall not be responsible for any transaction conducted based on the information given in this report, which is in violation of rules and regulations of NCDEX.

The commodity price projections shown are not necessarily indicative of future price performance. The information herein, together with all estimates and forecasts, can change without notice. Analyst or any person related to Money CapitalHeight Research investment advisors Pvt. Ltd. might be holding positions in the commodity recommended. It is understood that anyone who is browsing through the site has done so at his free will and does not read any views expressed as a recommendation for which either the site or its owners or anyone can be held responsible for. Any surfing and reading of the information is the acceptance of this disclaimer.

All Rights Reserved.

[Investment in Commodity and equity market has its own risks.](#)

We, however, do not vouch for the accuracy or the completeness thereof. [we are not responsible for any loss incurred whatsoever for any financial profits or loss which may arise from the recommendations above.](#) Money CapitalHeight Research investment advisors Pvt. Ltd. does not purport to be an invitation or an offer to buy or sell any financial instrument. [Our Clients \(Paid Or Unpaid\), Any third party or anyone else have no rights to forward or share our calls or SMS or Report or Any Information Provided by us to/with anyone which is received directly or indirectly by them. If found so then Serious Legal Actions can be taken.](#)