

Weekly Newsletter-Equity

08/02/2016



Weekly Newsletter

Contents

- ▶ **Market Wrap**
- ▶ **Market Performance**
 - ▶ **NSE Gainers**
 - ▶ **NSE Losers**
 - ▶ **NIFTY 5 Days Up**
 - ▶ **Indian Equity Market**
 - ▶ **Index Watch**
 - ▶ **World Indices**
- ▶ **Technical Analysis**
 - ▶ **Nifty Future**
 - ▶ **Bank Nifty Future**

MARKET WRAP

- ▶ Indian markets edged down. Sensex & Nifty down by **1.02%** and **0.98%**.
- ▶ Wall Street ended down. USD Unemployment Rate came (Jan) **4.9%** Vs **5.0%**.
- ▶ Asia-Pacific markets closed down. INR Interest Rate Decision **No Changes**.

Indian indices moved in mixed trend on the back of global sentiments. Global stock markets fell and the U.S. dollar rallied after a key U.S. jobs report U.S. non-farm payrolls increased by just 151,000 jobs last month, well below forecasts of 190,000, the unemployment rate fell to 4.9 percent, the lowest since February 2008, and a sharp rise in wages suggested the labor market recovery remained on track.

Indian indices remained rebound from lower level during the week. Volatile global economy and currency fluctuation, especially the weakening of the rupee against the US dollar, continued to impact on Indian economy. India's foreign Exchange reserves improved \$1.59B in the week ended Jan.29 to \$349.12B. This is the sharpest gain in a week so far this year. In the first fortnight of the calendar, foreign exchange reserves had fallen more than \$3B before improving by only \$355B in the week ended Jan22.

World markets trend moves mixed during the week. USA, Asian and Euro markets were consolidating on negative note during the week. DAX and CAC closed by **5.22%** and **4.90%** each. FTSE100 index went down by 3.87%, S&P 500 closed positive by 0.64%; NASDAQ was down by 5.44%. In Asian market Nikkei went down by 3.99%. HangSeng went down by 2.01% & KLSE went down by 0.32%. Jakarta was up by 3.98%, Straits Times down by 0.22% and Seoul closed on negative note by 0.30%.

MARKET PERFORMANCE

NSE GAINERS

Company Name	Current(Rs.)	Prev. Close (Rs.)	Change (Rs.)	Change (%)
Bharti Airtel Ltd.	307.20	289.90	17.30	5.97
Lupin Ltd.	1802.85	1710.75	92.10	5.38
Cairn India Ltd.	127.40	122.15	5.25	4.30
YES Bank Ltd.	777.05	746.80	30.25	4.05
Punjab National Bank	94.70	91.30	3.40	3.72

NSE LOSERS

Company Name	Current(Rs.)	Prev. Close (Rs.)	Change (Rs.)	Change (%)
NTPC Ltd.	124.80	142.45	-17.65	-12.39
Maruti Suzuki India Ltd.	3723.40	4095.85	-372.45	-9.09
ICICI Bank Ltd.	209.40	230.15	-20.75	-9.02
Bosch Ltd.	16089.10	17495.95	-1406.85	-8.04
GAIL (India) Ltd.	342.55	368.60	-26.05	-7.07

NIFTY - 5 DAYS UP

Company Name	Current (Rs)	Prev. Close (Rs.)	Change (Rs.)	Change (%)
New Delhi Television	104.65	74.90	29.75	39.72
Transwarranty Fin.	13.45	10.65	2.80	26.29
Tijaria Polypipe	9.35	8.10	1.25	15.43
Vakrangee	208.30	182.60	25.70	14.07
Neuland Laboratories	696.00	691.40	4.60	0.67

INDIAN EQUITY MARKET

INDICES	VALUE	CHANGE	% CHANGE
NIFTY FUTURE	7527.00	-38.00	-0.50
BANK NIFTY FUTURE	15265.00	-274.00	-1.76
SENSEX	24617.00	-254.00	-1.02

Index Watch

INDEX	29.1.2016	05.02.2016	W/W CHANGE	% CHANGE
S&P CNX NIFTY	7563.55	7489.10	-74.45	-0.98
CNX NIFTY JR.	18399.00	18269.55	-129.45	-0.70
INDIA VIX	17.24	18.12	0.88	5.08
BANK NIFTY	15522.40	15162.05	-360.35	-2.32
CNX 100	7659.65	7587.70	-71.95	-0.94
S&P CNX 500	6339.45	6270.50	-68.95	-1.09
CNX MIDCAP	12469.10	12382.80	-86.30	-0.69
NIFTY MIDCAP 50	3093.25	3023.25	-70.00	-2.26
CNX INFRA	2424.40	2408.95	-15.45	-0.64
CNX IT	11236.15	11227.55	-8.60	-0.08
CNX REALTY	153.55	147.35	-6.20	-4.04
CNX METAL	1658.45	1643.25	-15.20	-0.92

WORLD INDICES

Indices	Country	Date	Index	Net Change	Change (%)
Asian Markets					
Hang Seng	Hong Kong	05FEB16	19,288.17	-394.94	-2.01
Jakarta Composite	Indonesia	05FEB16	4,798.95	183.79	3.98
Nikkei 225	Japan	05FEB16	16,819.59	-698.71	-3.99
KLSE Composite	Malaysia	05FEB16	1,662.46	-5.34	-0.32
Straits Times	Singapore	05FEB16	2,623.21	-5.90	-0.22
Seoul Composite	South Korea	05FEB16	1,917.79	5.73	0.30
European Markets					
FTSE 100	United Kingdom	05FEB16	5,848.06	-235.73	-3.87
CAC 40	France	05FEB16	4,200.67	-216.35	-4.90
DAX	Germany	05FEB16	9,286.23	-511.88	-5.22
U.S.A. Markets					
Nasdaq	United States	05FEB16	4,363.14	-250.81	-5.44
DJIA	United States	05FEB16	16,412.50	230.00	1.42
S&P 500	United States	05FEB16	1,916.25	12.25	0.64

TECHNICAL VIEW

WEEKLY PIVOT

INDICES	R4	R3	R2	R1	P	S1	S2	S3	S4
NIFTY	8199	7967	7735	7631	7503	7399	7271	7039	9807

OUTLOOK

Trend: - Consolidated

Resistance: - 7625, 7800

Support: - 7475, 7235

Strategy: - Buy on Dips

NIFTY WEEKLY



BANK NIFTY

WEEKLY PIVOT

SCRIPT	R4	R3	R2	R1	P	S1	S2	S3	S4
BANK NIFTY	17679	16860	16040	15652	15220	14832	14400	13580	12759

OUTLOOK

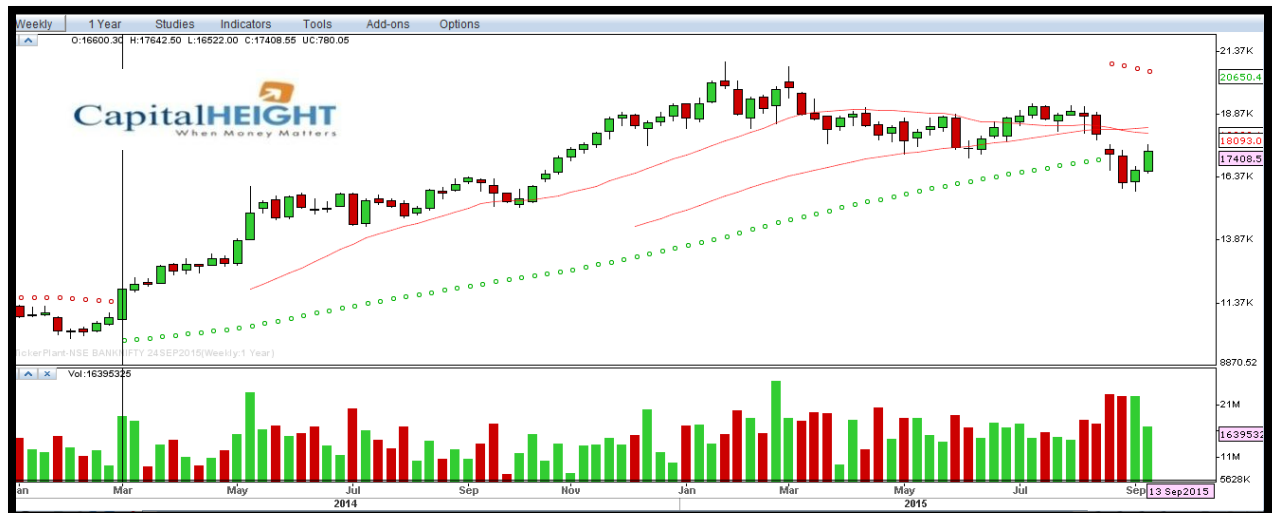
Trend: - Consolidated

Resistance: - 15730, 16070

Support: - 15125, 14680

Strategy: - Buy on Dips

BANK NIFTY WEEKLY



Disclaimer

The information and views in this report, our website & all the service we provide are believed to be reliable, but we do not accept any responsibility (or liability) for errors of fact or opinion. Users have the right to choose the product/s that suits them the most.

Sincere efforts have been made to present the right investment perspective. The information contained herein is based on analysis and up on sources that we consider reliable.

This material is for personal information and based upon it & takes no responsibility

The information given herein should be treated as only factor, while making investment decision. The report does not provide individually tailor-made investment advice. Money CapitalHeight Research investment advisors Pvt. Ltd. recommends that investors independently evaluate particular investments and strategies, and encourages investors to seek the advice of a financial adviser. Money CapitalHeight Research investment advisors Pvt. Ltd. shall not be responsible for any transaction conducted based on the information given in this report, which is in violation of rules and regulations of NSE and BSE.

The share price projections shown are not necessarily indicative of future price performance. The information herein, together with all estimates and forecasts, can change without notice. Analyst or any person related to Money CapitalHeight Research Pvt. Ltd. might be holding positions in the stocks recommended. It is understood that anyone who is browsing through the site has done so at his free will and does not read any views expressed as a recommendation for which either the site or its owners or anyone can be held responsible for. Any surfing and reading of the information is the acceptance of this disclaimer.

All Rights Reserved.

Investment in Commodity and equity market has its own risks.

We, however, do not vouch for the accuracy or the completeness thereof. **we are not responsible for any loss incurred whatsoever for any financial profits or loss which may arise from the recommendations above.** Money CapitalHeight Research investment advisors Pvt. Ltd. does not purport to be an invitation or an offer to buy or sell any financial instrument. **Our Clients (Paid Or Unpaid), Any third party or anyone else have no rights to forward or share our calls or SMS or Report or Any Information Provided by us to/with anyone which is received directly or indirectly by them. If found so then Serious Legal Actions can be taken.**